



SZABO SCANDIC

Part of Europa Biosite

Produktinformation



Forschungsprodukte & Biochemikalien



Zellkultur & Verbrauchsmaterial



Diagnostik & molekulare Diagnostik



Laborgeräte & Service

Weitere Information auf den folgenden Seiten!
See the following pages for more information!



Lieferung & Zahlungsart

siehe unsere [Liefer- und Versandbedingungen](#)

Zuschläge

- Mindermengenzuschlag
- Trockeneiszuschlag
- Gefahrgutzuschlag
- Expressversand

SZABO-SCANDIC HandelsgmbH

Quellenstraße 110, A-1100 Wien

T. +43(0)1 489 3961-0

F. +43(0)1 489 3961-7

mail@szabo-scandic.com

www.szabo-scandic.com

[linkedin.com/company/szaboscandic](https://www.linkedin.com/company/szaboscandic) 

TROVE2 293T Cell Transient Overexpression Lysate(Denatured)

Catalog # : H00006738-T01

規格 : [100 uL]

[List All](#)

Specification

Transfected Cell Line: 293T

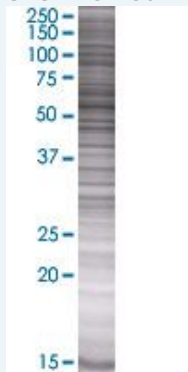
Plasmid: pCMV-TROVE2 full-length

Host: Human

Theoretical MW (kDa): 59.29

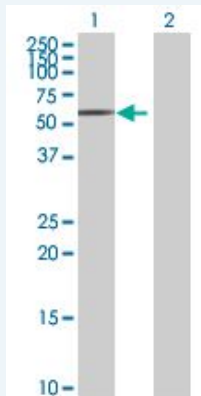
Quality Control Testing: Transient overexpression cell lysate was tested with Anti-TROVE2 antibody ([H00006738-B01](#)) by Western Blots.

SDS-PAGE Gel



TROVE2 transfected lysate.

Western Blot



Lane 1: TROVE2 transfected lysate (59.29 KDa)

Lane 2: Non-transfected lysate.

Storage Buffer: 1X Sample Buffer (50 mM Tris-HCl, 2% SDS, 10% glycerol, 300 mM 2-mercaptoethanol, 0.01% Bromophenol blue)

Storage Instruction: Store at -80°C. Aliquot to avoid repeated freezing and thawing.

MSDS:  [Download](#)

Applications

Application Image

Western Blot

Western Blot

Gene Information

Entrez GeneID: [6738](#)

GeneBank Accession#: [NM_004600.4](#)

Protein Accession#: [NP_004591.2](#)

Gene Name: TROVE2

Gene Alias: RO60,SSA2

Gene Description: TROVE domain family, member 2

Omim ID: [600063](#)

Gene Ontology: [Hyperlink](#)

Other Designations: OTTHUMP00000033759,OTTHUMP00000033760,OTTHUMP00000033764,Sjogren syndrome antigen A2 (60kD, ribonucleoprotein autoantigen SS-A/Ro),Sjogren syndrome antigen A2 (60kDa, ribonucleoprotein autoantigen SS-A/Ro),bA101E13.2 (Sjogren syndrome antigen A2 (60kD, ri

Gene Pathway

[Systemic lupus erythematosus](#)