



# SZABO SCANDIC

Part of Europa Biosite

## Produktinformation



Forschungsprodukte & Biochemikalien



Zellkultur & Verbrauchsmaterial



Diagnostik & molekulare Diagnostik



Laborgeräte & Service

Weitere Information auf den folgenden Seiten!  
See the following pages for more information!



### Lieferung & Zahlungsart

siehe unsere [Liefer- und Versandbedingungen](#)

### Zuschläge

- Mindermengenzuschlag
- Trockeneiszuschlag
- Gefahrgutzuschlag
- Expressversand

### SZABO-SCANDIC HandelsgmbH

Quellenstraße 110, A-1100 Wien

T. +43(0)1 489 3961-0

F. +43(0)1 489 3961-7

[mail@szabo-scandic.com](mailto:mail@szabo-scandic.com)

[www.szabo-scandic.com](http://www.szabo-scandic.com)

[linkedin.com/company/szaboscandic](https://www.linkedin.com/company/szaboscandic) 

## SSB monoclonal antibody (M01), clone 1D6-H5

Catalog # : H00006741-M01

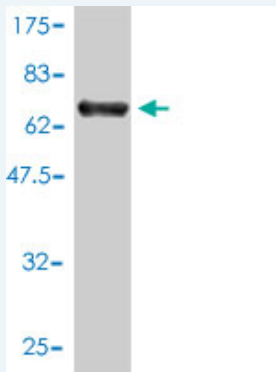
規格 : [ 100 ug ]

[List All](#)

### Specification

<b>Product Description:</b>	Mouse monoclonal antibody raised against a full length recombinant SSB.
<b>Immunogen:</b>	SSB (AAH01289, 1 a.a. ~ 408 a.a) full-length recombinant protein with GST tag. MW of the GST tag alone is 26 KDa.
<b>Sequence:</b>	MAENGDNEKMAALEAKICHQIEYYFGDFNLPRDKFLKEQIKLDEGWVPLE IMIKFNRLNRLTTDFNVIVEALSKSKAELMEISEDKTKIRRSPSKPLPEVTDE YKNDVKNRSVYIKGFPTDATALDDIKEWLEDKGQVLNIQMRRTLHKAFKGS IFVVFDSIESAKKFVETPGQKYKETDLLILFKDDYFAKKNEERKQNKVEAK LRAKQEQEAKQKLEEDAEMKSLLEEKIGCLLKFSGDLDQTCREDLHILFS NHGEIKWIDFVRGAKEGIIIFKEKAKEALGKAKDANNGNLQLRNKEVTWE VLEGEVEKEALKKIIEDQQESLNKWKSKGRRFKGKGGKGNKAAQPGSGK GKVQFQGGKTKFASDDEHDEHDENGATGPVKRAREETDKEEPASKQQ KTENGAGDQ
<b>Host:</b>	Mouse
<b>Reactivity:</b>	Human
<b>Isotype:</b>	IgG1 kappa

**Quality Control Testing:** Antibody Reactive Against Recombinant Protein.



Western Blot detection against Immunogen (70.62 KDa) .

**Storage Buffer:** In 1x PBS, pH 7.4

**Storage Instruction:** Store at -20°C or lower. Aliquot to avoid repeated freezing and thawing.

**MSDS:** [Download](#)

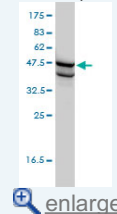
**Datasheet:** [Download](#)

### Publication Reference

1. [Phosphorylation of human La protein at Ser366 by casein kinase II contributes to hepatitis B virus replication and expression in vitro.](#)  
Tang J, Zhang ZH, Huang M, Heise T, Zhang J, Liu GL. Journal of Viral Hepatitis, 2012  
doi:10.1111/j.1365-2893.2012.01636.x

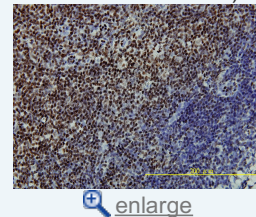
### Application Image

Western Blot (Cell lysate)

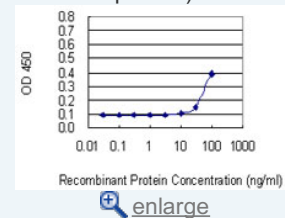


Western Blot (Recombinant protein)

Immunohistochemistry (Formalin/PFA-fixed paraffin-embedded sections)



Sandwich ELISA (Recombinant protein)

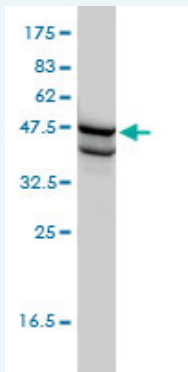


ELISA


2. Akt phosphorylation of La regulates specific mRNA translation in glial progenitors.  
Brenet F, Socci ND, Sonenberg N, Holland EC. *Oncogene*. 2009 Jan 8;28(1):128-39.  
Epub 2008 Oct 6.

## Applications

### Western Blot (Cell lysate)



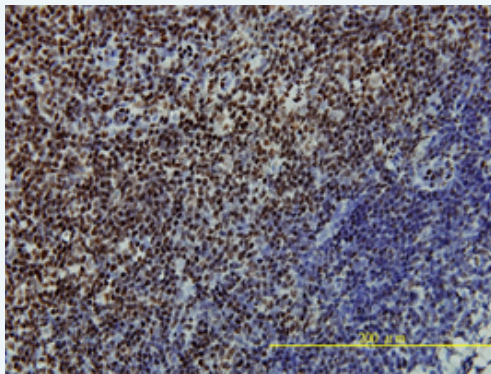
SSB monoclonal antibody (M01), clone 1D6-H5 Western Blot analysis of SSB expression in HL-60 ( Cat # L014V1 ).


 [Protocol Download](#)

### Western Blot (Recombinant protein)

 [Protocol Download](#)

### Immunohistochemistry (Formalin/PFA-fixed paraffin-embedded sections)

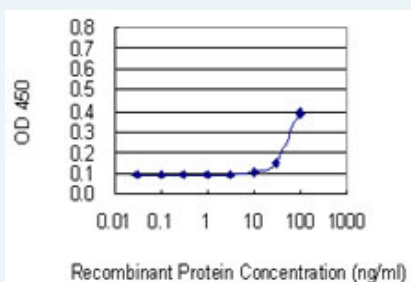


 [enlarge this image](#)


Immunoperoxidase of monoclonal antibody to SSB on formalin-fixed paraffin-embedded human tonsil tissue. [antibody concentration 5 ug/ml]

 [Protocol Download](#)

### Sandwich ELISA (Recombinant protein)



Detection limit for recombinant GST tagged SSB is 10 ng/ml as a capture antibody.

 [Protocol Download](#)

## ELISA

## Gene Information

Entrez GeneID: [6741](#)

GeneBank [BC001289](#)

Accession#:

**Protein** [AAH01289](#)

**Accession#:**

**Gene Name:** SSB

**Gene Alias:** LARP3,La

**Gene** Sjogren syndrome antigen B (autoantigen La)

**Description:**

**Omim ID:** [109090](#)

**Gene Ontology:** [Hyperlink](#)

**Gene Summary:** La is involved in diverse aspects of RNA metabolism, including binding and protecting 3-prime UUU(OH) elements of newly RNA polymerase III (see MIM 606007)-transcribed RNA, processing 5-prime and 3-prime ends of pre-tRNA precursors, acting as an RNA chaperone, and binding viral RNAs associated with hepatitis C virus. La protein was originally defined by its reactivity with autoantibodies from patients with Sjogren syndrome (MIM 270150) and systemic lupus erythematosus (SLE; MIM 152700) (Teplova et al., 2006 [PubMed 16387655]).[supplied by OMIM]

**Other** La ribonucleoprotein domain family, member 3,SS-B/La  
**Designations:** protein,autoantigen La

#### **Gene Pathway**

[Systemic lupus erythematosus](#)

#### **Related Disease**

[Disease Progression](#) [Disease Susceptibility](#) [HIV Infections](#)