



# SZABO SCANDIC

Part of Europa Biosite

## Produktinformation



Forschungsprodukte & Biochemikalien



Zellkultur & Verbrauchsmaterial



Diagnostik & molekulare Diagnostik



Laborgeräte & Service

Weitere Information auf den folgenden Seiten!  
See the following pages for more information!



### Lieferung & Zahlungsart

siehe unsere [Liefer- und Versandbedingungen](#)

### Zuschläge

- Mindermengenzuschlag
- Trockeneiszuschlag
- Gefahrgutzuschlag
- Expressversand

### SZABO-SCANDIC HandelsgmbH

Quellenstraße 110, A-1100 Wien

T. +43(0)1 489 3961-0

F. +43(0)1 489 3961-7

[mail@szabo-scandic.com](mailto:mail@szabo-scandic.com)

[www.szabo-scandic.com](http://www.szabo-scandic.com)

[linkedin.com/company/szaboscandic](https://www.linkedin.com/company/szaboscandic) 

## SSB monoclonal antibody (M02), clone 3H7-F7

Catalog # : H00006741-M02

規格 : [ 100 ug ]

[List All](#)

### Specification

**Product Description:** Mouse monoclonal antibody raised against a full-length recombinant SSB.

**Immunogen:** SSB (AAH01289, 1 a.a. ~ 408 a.a) full-length recombinant protein with GST tag. MW of the GST tag alone is 26 KDa.

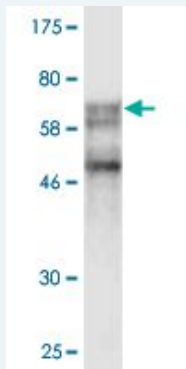
**Sequence:** MAENGDNEKMAALEAKICHQIEYYFGDFNLPRDKFLKEQIKLDEGWVPLE  
 IMIKFNRLNRLTTDFNVIVEALSKSKAELMEISEDKTKIRRSPSKPLPEVTDE  
 YKNDVKNRSVYIKGFPTDATALDDIKEWLEDKGQVLNIQMRRTLHKAFKGS  
 IFVVFDSIESAKKFVETPGQKYKETDLLILFKDDYFAKNEERKQNKVEAK  
 LRAKQEQEAKQKLEEDAEMKSLEEKIGCLLKFSGLDDQTCREDLHILFS  
 NHGEIKWIDFVRGAKEGIIILFKEKAKEALGKAKDANNGNLQLRNKEVTWE  
 VLEGEVEKEALKKIIEDQQESLNKWKSKGRRFKGKGKGNKAAQPGSGK  
 GKVQFQGGKTKFASDDEHDEHDENGATGPVKRAREETDKEEPASKQQ  
 KTENGAGDQ

**Host:** Mouse

**Reactivity:** Human

**Isotype:** IgG1 Kappa

**Quality Control Testing:** Antibody Reactive Against Recombinant Protein.



Western Blot detection against Immunogen (70.62 KDa) .

**Storage Buffer:** In 1x PBS, pH 7.4

**Storage Instruction:** Store at -20°C or lower. Aliquot to avoid repeated freezing and thawing.

**MSDS:** [Download](#)

**Datasheet:** [Download](#)

### Applications

**Western Blot (Recombinant protein)**

[Protocol Download](#)

**ELISA**

### Application Image

Western Blot (Recombinant protein)

ELISA

## Gene Information

Entrez GeneID: [6741](#)

GeneBank Accession#: [BC001289](#)

Protein Accession#: [AAH01289](#)

Gene Name: SSB

Gene Alias: LARP3,La

Gene Description: Sjogren syndrome antigen B (autoantigen La)

Omim ID: [109090](#)

Gene Ontology: [Hyperlink](#)

**Gene Summary:** La is involved in diverse aspects of RNA metabolism, including binding and protecting 3-prime UUU(OH) elements of newly RNA polymerase III (see MIM 606007)-transcribed RNA, processing 5-prime and 3-prime ends of pre-tRNA precursors, acting as an RNA chaperone, and binding viral RNAs associated with hepatitis C virus. La protein was originally defined by its reactivity with autoantibodies from patients with Sjogren syndrome (MIM 270150) and systemic lupus erythematosus (SLE; MIM 152700) (Teplova et al., 2006 [PubMed 16387655]).[supplied by OMIM]

**Other Designations:** La ribonucleoprotein domain family, member 3,SS-B/La protein,autoantigen La

## Gene Pathway

[Systemic lupus erythematosus](#)

## Related Disease

[Disease Progression](#) [Disease Susceptibility](#) [HIV Infections](#)