



# SZABO SCANDIC

Part of Europa Biosite

## Produktinformation



Forschungsprodukte & Biochemikalien



Zellkultur & Verbrauchsmaterial



Diagnostik & molekulare Diagnostik



Laborgeräte & Service

Weitere Information auf den folgenden Seiten!  
See the following pages for more information!



### Lieferung & Zahlungsart

siehe unsere [Liefer- und Versandbedingungen](#)

### Zuschläge

- Mindermengenzuschlag
- Trockeneiszuschlag
- Gefahrgutzuschlag
- Expressversand

### SZABO-SCANDIC HandelsgmbH

Quellenstraße 110, A-1100 Wien

T. +43(0)1 489 3961-0

F. +43(0)1 489 3961-7

[mail@szabo-scandic.com](mailto:mail@szabo-scandic.com)

[www.szabo-scandic.com](http://www.szabo-scandic.com)

[linkedin.com/company/szaboscandic](https://www.linkedin.com/company/szaboscandic) 

## SSBP1 monoclonal antibody (M10), clone 4C1

Catalog # : H00006742-M10

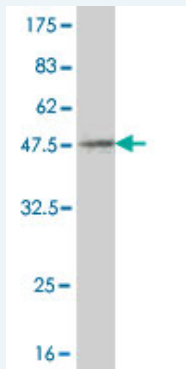
規格 : [ 100 ug ]

List All

### Specification

|                             |   |
|-----------------------------|---|
| <b>Product Description:</b> | Mouse monoclonal antibody raised against a full length recombinant SSBP1.   |
| <b>Immunogen:</b>           | SSBP1 (AAH00895, 1 a.a. ~ 148 a.a) full-length recombinant protein with GST tag. MW of the GST tag alone is 26 KDa.                                       |
| <b>Sequence:</b>            | MFRRPVLQVLRQFVRHESETTSLVLERSLNRVHLLGRVGQDPVLRQV<br>EGKNPVTIFSLATNEMWRSGDSEVYQLGDVSQKTTWHRISVFRPGLRD<br>VAYQYVKKGSRIYLEGKIDYGEYMDKNNVRRQATTIADNIFLSDQTKEKE |
| <b>Host:</b>                | Mouse   |
| <b>Reactivity:</b>          | Human   |
| <b>Isotype:</b>             | IgG2a Kappa   |

**Quality Control Testing:** Antibody Reactive Against Recombinant Protein.



Western Blot detection against Immunogen (42.02 KDa) .

**Storage Buffer:** In 1x PBS, pH 7.4

**Storage Instruction:** Store at -20°C or lower. Aliquot to avoid repeated freezing and thawing.

**MSDS:** [Download](#)

**Datasheet:** [Download](#)

### Publication Reference

- Involvement of p53 in cell death following cell cycle arrest and mitotic catastrophe induced by rotenone.  
Goncalves AP, Maximo V, Lima J, Singh KK, Soares P, Videira A. *Biochim Biophys Acta*. 2011 Jan 9. [Epub ahead of print]

### Applications

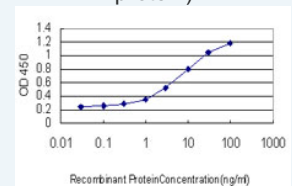
**Western Blot (Recombinant protein)**

[Protocol Download](#)

### Application Image

Western Blot (Recombinant protein)

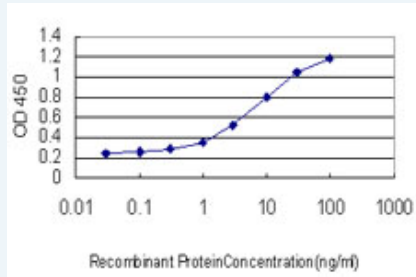
Sandwich ELISA (Recombinant protein)



[enlarge](#)

ELISA

## Sandwich ELISA (Recombinant protein)



Detection limit for recombinant GST tagged SSBP1 is approximately 0.3ng/ml as a capture antibody.

 [Protocol Download](#)

## ELISA

### Gene Information

Entrez GeneID: [6742](#)

GeneBank [BC000895](#)  
Accession#:

Protein [AAH00895](#)  
Accession#:

Gene Name: SSBP1

Gene Alias: SSBP

Gene Description: single-stranded DNA binding protein 1

Omim ID: [600439](#)

Gene Ontology: [Hyperlink](#)

Gene Summary: SSBP is a housekeeping gene involved in mitochondrial biogenesis (Tiranti et al., 1995 [PubMed 7789991]).[supplied by OMIM]

Other Designations: single-stranded DNA-binding protein 1

### Gene Pathway

[DNA replication](#) [Homologous recombination](#) [Mismatch repair](#)

[服務條款](#) | [隱私權政策](#) | [著作及商標](#) | [網站地圖](#)

©2016 亞諾法生技股份有限公司 Abnova Corporation. 版權所有.