



SZABO SCANDIC

Part of Europa Biosite

Produktinformation



Forschungsprodukte & Biochemikalien



Zellkultur & Verbrauchsmaterial



Diagnostik & molekulare Diagnostik



Laborgeräte & Service

Weitere Information auf den folgenden Seiten!
See the following pages for more information!



Lieferung & Zahlungsart

siehe unsere [Liefer- und Versandbedingungen](#)

Zuschläge

- Mindermengenzuschlag
- Trockeneiszuschlag
- Gefahrgutzuschlag
- Expressversand

SZABO-SCANDIC HandelsgmbH

Quellenstraße 110, A-1100 Wien

T. +43(0)1 489 3961-0

F. +43(0)1 489 3961-7

mail@szabo-scandic.com

www.szabo-scandic.com

[linkedin.com/company/szaboscandic](https://www.linkedin.com/company/szaboscandic) 

SSR1 MaxPab mouse polyclonal antibody (B01) MaxPab®

Catalog # : H00006745-B01

規格 : [50 uL]

List All

Specification

Product Description: Mouse polyclonal antibody raised against a full-length human SSR1 protein.

Immunogen: SSR1 (AAH07710.1, 1 a.a. ~ 286 a.a) full-length human protein.

Sequence:
 MRLLPRLLLLLLVFPATVLFRRGPRGLLAVAQDLTEDEETVEDSIIEDD
 DEAEVEEDEPTDLVEDKEEEDVSGEPEASPSADTTILFVKGEDFPANNIV
 KFLVGFTNKGTEDFIVESLDASFRYPQDYQFYIQNFTALPLNTVPPQRQ
 ATFEYSFIPAEPMGGRPFLVINLNYKDLNGMVFQDAVFNQTVTVIERED
 GLDGETIFMYMFLAGLGLLVVGLHQLLESRKRRKRIQKVMGTSSQNDV
 DMSWIPQETLNQINKASPRRLPRKRAQKRSVGSDE

Host: Mouse

Reactivity: Human

Quality Control Testing: Antibody reactive against mammalian transfected lysate.

Storage Buffer: No additive

Storage Instruction: Store at -20°C or lower. Aliquot to avoid repeated freezing and thawing.

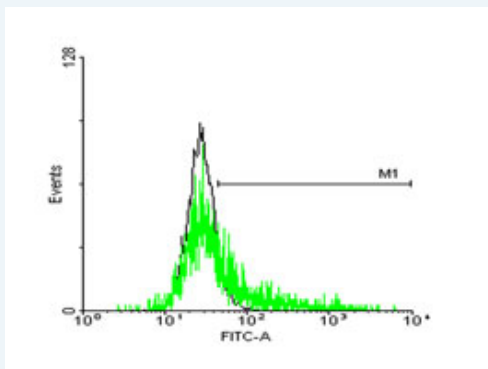
Note: For IHC and IF applications, antibody purification with Protein A will be needed prior to use.

MSDS:  [Download](#)

Datasheet:  [Download](#)

Applications

Flow Cytometry



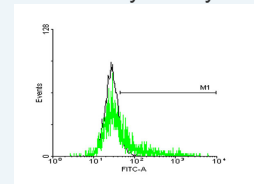
 enlarge this image

FACS analysis of negative control 293 cells (Black) and SSR1 expressing 293 cells (Green) using SSR1 purified MaxPab mouse polyclonal antibody.

Western Blot (Cell lysate)

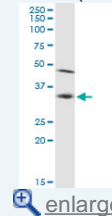
Application Image


Flow Cytometry



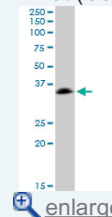
 enlarge


Western Blot (Cell lysate)



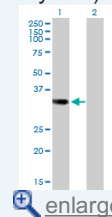
 enlarge


Western Blot (Cell lysate)

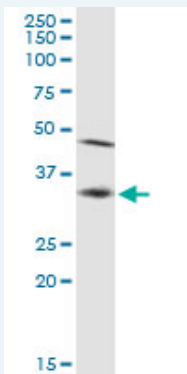


 enlarge

Western Blot (Transfected lysate)



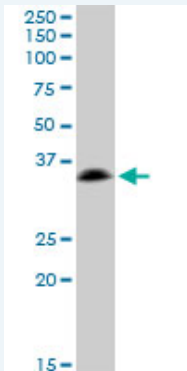
 enlarge



SSR1 MaxPab polyclonal antibody. Western Blot analysis of SSR1 expression in HeLa.

[Protocol Download](#)

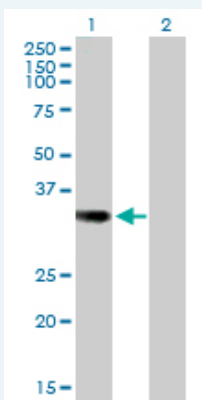
Western Blot (Cell lysate)



SSR1 MaxPab polyclonal antibody. Western Blot analysis of SSR1 expression in A-431.

[Protocol Download](#)

Western Blot (Transfected lysate)



Western Blot analysis of SSR1 expression in transfected 293T cell line ([H00006745-T02](#)) by SSR1 MaxPab polyclonal antibody.

Lane 1: SSR1 transfected lysate(32.20 KDa).

Lane 2: Non-transfected lysate.

[Protocol Download](#)

Gene Information

Entrez GeneID: [6745](#)

GeneBank [BC007710](#)

Accession#:

Protein [AAH07710.1](#)

Accession#:

Gene Name: SSR1

Gene Alias: DKFZp781N23103,FLJ14232,FLJ22100,FLJ23034,FLJ78242,FLJ93042

,TRAPA

Gene Description: signal sequence receptor, alpha

Omim ID: [600868](#)

Gene Ontology: [Hyperlink](#)

Gene Summary: The signal sequence receptor (SSR) is a glycosylated endoplasmic reticulum (ER) membrane receptor associated with protein translocation across the ER membrane. The SSR consists of 2 subunits, a 34-kD glycoprotein encoded by this gene and a 22-kD glycoprotein. This gene generates several mRNA species as a result of complex alternative polyadenylation. This gene is unusual in that it utilizes arrays of polyA signal sequences that are mostly non-canonical. [provided by RefSeq]

Other Designations: SSR alpha subunit,TRAP alpha,translocon-associated protein alpha subunit

[服務條款](#) | [隱私權政策](#) | [著作及商標](#) | [網站地圖](#)

©2016 亞諾法生技股份有限公司 Abnova Corporation. 版權所有.