



SZABO SCANDIC

Part of Europa Biosite

Produktinformation



Forschungsprodukte & Biochemikalien



Zellkultur & Verbrauchsmaterial



Diagnostik & molekulare Diagnostik



Laborgeräte & Service

Weitere Information auf den folgenden Seiten!
See the following pages for more information!



Lieferung & Zahlungsart

siehe unsere [Liefer- und Versandbedingungen](#)

Zuschläge

- Mindermengenzuschlag
- Trockeneiszuschlag
- Gefahrgutzuschlag
- Expressversand

SZABO-SCANDIC HandelsgmbH

Quellenstraße 110, A-1100 Wien

T. +43(0)1 489 3961-0

F. +43(0)1 489 3961-7

mail@szabo-scandic.com

www.szabo-scandic.com

[linkedin.com/company/szaboscandic](https://www.linkedin.com/company/szaboscandic) 

SSR1 monoclonal antibody (M01), clone 1A12

Catalog # : H00006745-M01

規格 : [100 ug]

[List All](#)

Specification

Product Description: Mouse monoclonal antibody raised against a full length recombinant SSR1.

Immunogen: SSR1 (AAH07710, 33 a.a. ~ 286 a.a) full-length recombinant protein with GST tag. MW of the GST tag alone is 26 KDa.

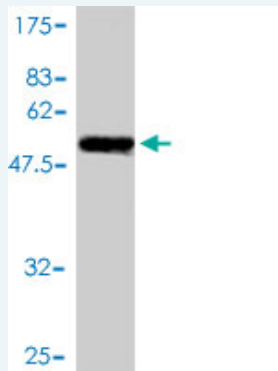
Sequence:
 QDLTEDEETVEDSIIIEDEDDEAEVEEEDPTDLVEDKEEEDVSGEPEASPS
 ADTTILFVKGEDFPANNIVKFLVGFTNKGTEDFVESLDASFRYPQDYQFY
 IQNF TALPLNTV VPPQRQATFEYSFIPAEPMGRRPGLVINLNYKDLNGN
 VFQDAVFNQTVTVIEREDGLDGETIFMYMFLAGLGLLVIVGLHQLLESRK
 RKRPIQKVEMGTSSQNDVDMSWIPQETLNQINKASPRRLPRKRAQKRSV
 GSDE

Host: Mouse

Reactivity: Human

Isotype: IgG1 Kappa

Quality Control Testing: Antibody Reactive Against Recombinant Protein.



Western Blot detection against Immunogen (53.68 KDa) .

Storage Buffer: In 1x PBS, pH 7.4

Storage Instruction: Store at -20°C or lower. Aliquot to avoid repeated freezing and thawing.

MSDS: [Download](#)

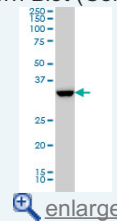
Datasheet: [Download](#)

Applications

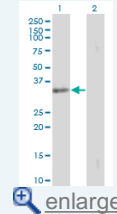
Western Blot (Cell lysate)

Application Image

Western Blot (Cell lysate)

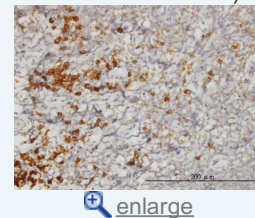


Western Blot (Transfected lysate)

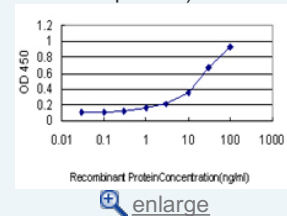


Western Blot (Recombinant protein)

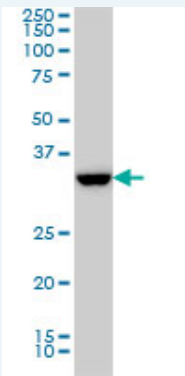
Immunohistochemistry (Formalin/PFA-fixed paraffin-embedded sections)



Sandwich ELISA (Recombinant protein)



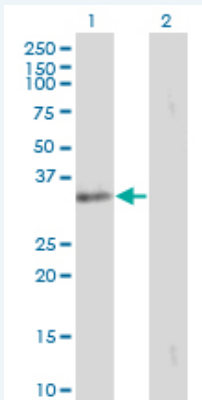
ELISA



SSR1 monoclonal antibody (M01), clone 1A12 Western Blot analysis of SSR1 expression in HL-60 (Cat # L014V1).

[Protocol Download](#)

Western Blot (Transfected lysate)



Western Blot analysis of SSR1 expression in transfected 293T cell line by SSR1 monoclonal antibody (M01), clone 1A12.

Lane 1: SSR1 transfected lysate(32.2 KDa).

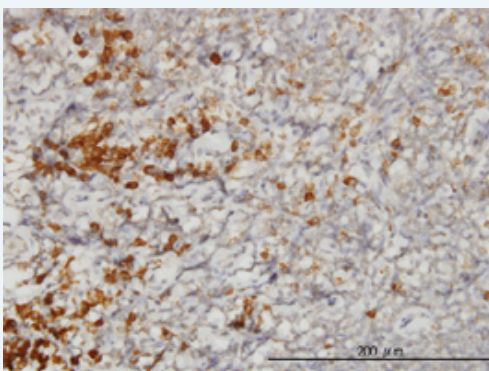
Lane 2: Non-transfected lysate.

[Protocol Download](#)

Western Blot (Recombinant protein)

[Protocol Download](#)

Immunohistochemistry (Formalin/PFA-fixed paraffin-embedded sections)

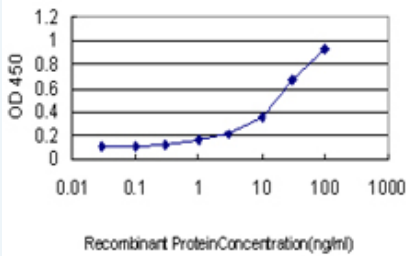


[enlarge this image](#)


Immunoperoxidase of monoclonal antibody to SSR1 on formalin-fixed paraffin-embedded human tonsil. [antibody concentration 3 ug/ml]

[Protocol Download](#)

Sandwich ELISA (Recombinant protein)



Detection limit for recombinant GST tagged SSR1 is approximately 1ng/ml as a capture antibody.

 [Protocol Download](#)

ELISA

Gene Information

Entrez GeneID: [6745](#)

GeneBank [BC007710](#)

Accession#:

Protein [AAH07710](#)

Accession#:

Gene Name: SSR1

Gene Alias: DKFZp781N23103,FLJ14232,FLJ22100,FLJ23034,FLJ78242,FLJ93042,TRAPA

Gene signal sequence receptor, alpha

Description:

Omim ID: [600868](#)

Gene Ontology: [Hyperlink](#)

Gene Summary: The signal sequence receptor (SSR) is a glycosylated endoplasmic reticulum (ER) membrane receptor associated with protein translocation across the ER membrane. The SSR consists of 2 subunits, a 34-kD glycoprotein encoded by this gene and a 22-kD glycoprotein. This gene generates several mRNA species as a result of complex alternative polyadenylation. This gene is unusual in that it utilizes arrays of polyA signal sequences that are mostly non-canonical. [provided by RefSeq]

Other Designations: SSR alpha subunit,TRAP alpha,translocon-associated protein alpha subunit

[服務條款](#) | [隱私權政策](#) | [著作及商標](#) | [網站地圖](#)

©2016 亞諾法生技股份有限公司 Abnova Corporation. 版權所有.