



SZABO SCANDIC

Part of Europa Biosite

Produktinformation



Forschungsprodukte & Biochemikalien



Zellkultur & Verbrauchsmaterial



Diagnostik & molekulare Diagnostik



Laborgeräte & Service

Weitere Information auf den folgenden Seiten!
See the following pages for more information!



Lieferung & Zahlungsart

siehe unsere [Liefer- und Versandbedingungen](#)

Zuschläge

- Mindermengenzuschlag
- Trockeneiszuschlag
- Gefahrgutzuschlag
- Expressversand

SZABO-SCANDIC HandelsgmbH

Quellenstraße 110, A-1100 Wien

T. +43(0)1 489 3961-0

F. +43(0)1 489 3961-7

mail@szabo-scandic.com

www.szabo-scandic.com

[linkedin.com/company/szaboscandic](https://www.linkedin.com/company/szaboscandic) 



SSR2 MaxPab mouse polyclonal antibody (B01) MaxPab®

Catalog # : H00006746-B01

規格 : [50 uL]

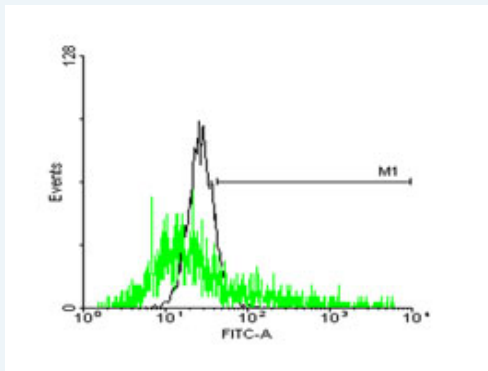
[List All](#)

Specification

Product Description:	Mouse polyclonal antibody raised against a full-length human SSR2 protein.
Immunogen:	SSR2 (AAH00341, 1 a.a. ~ 186 a.a) full-length human protein.
Sequence:	MPTMRLLSFVVLALFAVTQAEEGARLLASKSLLNRYAVEGRDLTLQYNIY NVGSSAALDVELSDDSFPPEDFGIVSGMLNVKWDRIAPASNVSHTVLRLP LKAGYFNFTSATITTYLAQEDGPVWIGSTAPGQGGILAQREFDRRFSPHF LDWAAFVMTLPSIGIPLLLWYSSKRKYDTPKTKKN
Host:	Mouse
Reactivity:	Human
Quality Control Testing:	Antibody reactive against mammalian transfected lysate.
Storage Buffer:	No additive
Storage Instruction:	Store at -20°C or lower. Aliquot to avoid repeated freezing and thawing.
Note:	For IHC and IF applications, antibody purification with Protein A will be needed prior to use.
MSDS:	 Download
Datasheet:	 Download

Applications

Flow Cytometry



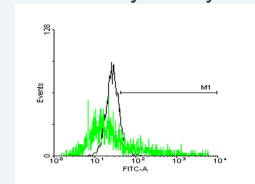
 [enlarge this image](#)

FACS analysis of negative control 293 cells (Black) and SSR2 expressing 293 cells (Green) using SSR2 purified MaxPab mouse polyclonal antibody.

Western Blot (Tissue lysate)

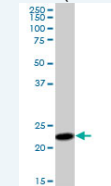
Application Image


Flow Cytometry



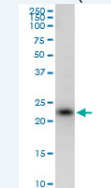
 [enlarge](#)


Western Blot (Tissue lysate)



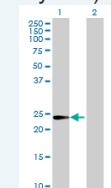
 [enlarge](#)


Western Blot (Cell lysate)

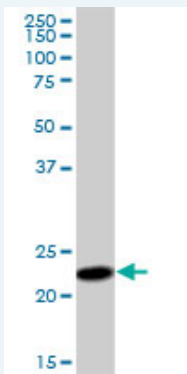


 [enlarge](#)

Western Blot (Transfected lysate)



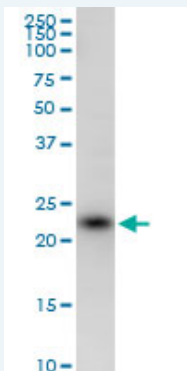
 [enlarge](#)



SSR2 MaxPab polyclonal antibody. Western Blot analysis of SSR2 expression in human placenta.

[Protocol Download](#)

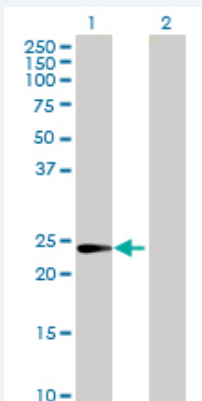
Western Blot (Cell lysate)



SSR2 MaxPab polyclonal antibody. Western Blot analysis of SSR2 expression in HeLa.

[Protocol Download](#)

Western Blot (Transfected lysate)



Western Blot analysis of SSR2 expression in transfected 293T cell line (H00006746-T01) by SSR2 MaxPab polyclonal antibody.

Lane 1: SSR2 transfected lysate(20.46 kDa).

Lane 2: Non-transfected lysate.

[Protocol Download](#)

Gene Information

Entrez GeneID: 6746

GeneBank BC000341

Accession#:

Protein AAH00341

Accession#:

Gene Name: SSR2

Gene Alias: DKFZp686F19123,HSD25,TLAP,TRAP-BETA,TRAPB

Gene Description: signal sequence receptor, beta (translocon-associated protein beta)

Omim ID: [600867](#)

Gene Ontology: [Hyperlink](#)

Gene Summary: The signal sequence receptor (SSR) is a glycosylated endoplasmic reticulum (ER) membrane receptor associated with protein translocation across the ER membrane. The SSR consists of 2 subunits, a 34-kD glycoprotein (alpha-SSR or SSR1) and a 22-kD glycoprotein (beta-SSR or SSR2). The human beta-signal sequence receptor gene (SSR2) maps to chromosome bands 1q21-q23. [provided by RefSeq]

Other Designations: signal sequence receptor, beta,translocon-associated protein beta

Related Disease

[Tobacco Use Disorder](#)

[服務條款](#) | [隱私權政策](#) | [著作及商標](#) | [網站地圖](#)

©2016 亞諾法生技股份有限公司 Abnova Corporation. 版權所有.