



SZABO SCANDIC

Part of Europa Biosite

Produktinformation



Forschungsprodukte & Biochemikalien



Zellkultur & Verbrauchsmaterial



Diagnostik & molekulare Diagnostik



Laborgeräte & Service

Weitere Information auf den folgenden Seiten!
See the following pages for more information!



Lieferung & Zahlungsart

siehe unsere [Liefer- und Versandbedingungen](#)

Zuschläge

- Mindermengenzuschlag
- Trockeneiszuschlag
- Gefahrgutzuschlag
- Expressversand

SZABO-SCANDIC HandelsgmbH

Quellenstraße 110, A-1100 Wien

T. +43(0)1 489 3961-0

F. +43(0)1 489 3961-7

mail@szabo-scandic.com

www.szabo-scandic.com

[linkedin.com/company/szaboscandic](https://www.linkedin.com/company/szaboscandic) 



SSR2 purified MaxPab mouse polyclonal antibody (B01P) MaxPab®

Catalog # : H00006746-B01P

規格 : [50 ug]

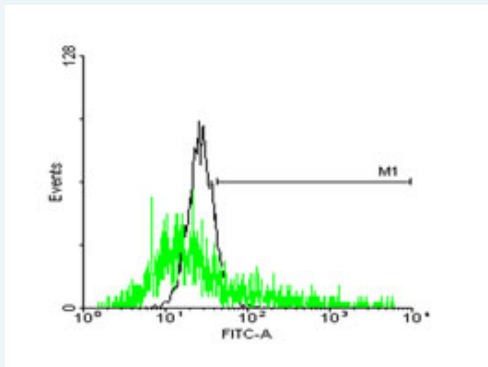
List All

Specification

Product Description:	Mouse polyclonal antibody raised against a full-length human SSR2 protein.
Immunogen:	SSR2 (AAH00341.1, 1 a.a. ~ 186 a.a) full-length human protein.
Sequence:	MPTMRLLSFVVLALFAVTQAEEGARLLASKSLLNRYAVEGRDLTLQYNIY NVGSSAALDVELSDDSFPPEDFGIVSGMLNVKWDRIAPASNVSHTVLRLP LKAGYFNFTSATITYLAQEDGPVVGSTAPGQGGILAQREFDRRFSPHF LDWAAFVGMTLPSIGIPLLLWYSSKRKYDTPKTKKN
Host:	Mouse
Reactivity:	Human
Quality Control Testing:	Antibody reactive against mammalian transfected lysate.
Storage Buffer:	In 1x PBS, pH 7.4
Storage Instruction:	Store at -20°C or lower. Aliquot to avoid repeated freezing and thawing.
MSDS:	 Download
Datasheet:	 Download

Applications

Flow Cytometry



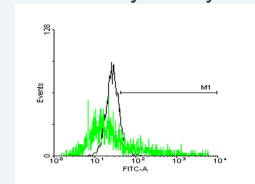
 enlarge this image

FACS analysis of negative control 293 cells (Black) and SSR2 expressing 293 cells (Green) using SSR2 purified MaxPab mouse polyclonal antibody.

Western Blot (Tissue lysate)

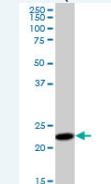
Application Image


Flow Cytometry



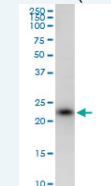
 enlarge

Western Blot (Tissue lysate)



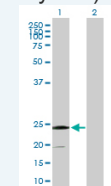
 enlarge

Western Blot (Cell lysate)

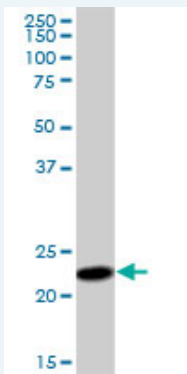


 enlarge

Western Blot (Transfected lysate)



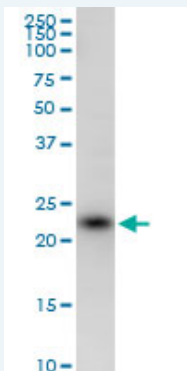
 enlarge



SSR2 MaxPab polyclonal antibody. Western Blot analysis of SSR2 expression in human placenta.

[Protocol Download](#)

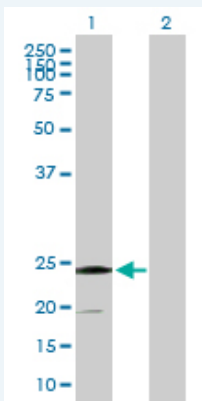
Western Blot (Cell lysate)



SSR2 MaxPab polyclonal antibody. Western Blot analysis of SSR2 expression in HeLa.

[Protocol Download](#)

Western Blot (Transfected lysate)



Western Blot analysis of SSR2 expression in transfected 293T cell line ([H00006746-T02](#)) by SSR2 MaxPab polyclonal antibody.

Lane 1: SSR2 transfected lysate(20.46 kDa).

Lane 2: Non-transfected lysate.

[Protocol Download](#)

Gene Information

Entrez GeneID: [6746](#)

GeneBank [BC000341](#)

Accession#:

Protein [AAH00341.1](#)

Accession#:

Gene Name: SSR2

Gene Alias: DKFZp686F19123,HSD25,TLAP,TRAP-BETA,TRAPB

Gene Description: signal sequence receptor, beta (translocon-associated protein beta)

Omim ID: [600867](#)

Gene Ontology: [Hyperlink](#)

Gene Summary: The signal sequence receptor (SSR) is a glycosylated endoplasmic reticulum (ER) membrane receptor associated with protein translocation across the ER membrane. The SSR consists of 2 subunits, a 34-kD glycoprotein (alpha-SSR or SSR1) and a 22-kD glycoprotein (beta-SSR or SSR2). The human beta-signal sequence receptor gene (SSR2) maps to chromosome bands 1q21-q23. [provided by RefSeq]

Other Designations: signal sequence receptor, beta,translocon-associated protein beta

Related Disease

[Tobacco Use Disorder](#)

[服務條款](#) | [隱私權政策](#) | [著作及商標](#) | [網站地圖](#)

©2016 亞諾法生技股份有限公司 Abnova Corporation. 版權所有.