



# SZABO SCANDIC

Part of Europa Biosite

## Produktinformation



Forschungsprodukte & Biochemikalien



Zellkultur & Verbrauchsmaterial



Diagnostik & molekulare Diagnostik



Laborgeräte & Service

Weitere Information auf den folgenden Seiten!  
See the following pages for more information!



### Lieferung & Zahlungsart

siehe unsere [Liefer- und Versandbedingungen](#)

### Zuschläge

- Mindermengenzuschlag
- Trockeneiszuschlag
- Gefahrgutzuschlag
- Expressversand

### SZABO-SCANDIC HandelsgmbH

Quellenstraße 110, A-1100 Wien

T. +43(0)1 489 3961-0

F. +43(0)1 489 3961-7

[mail@szabo-scandic.com](mailto:mail@szabo-scandic.com)

[www.szabo-scandic.com](http://www.szabo-scandic.com)

[linkedin.com/company/szaboscandic](https://www.linkedin.com/company/szaboscandic) 

## SSR2 293T Cell Transient Overexpression Lysate(Denatured)

Catalog # : H00006746-T02

規格 : [ 100 uL ]

[List All](#)

### Specification

**Transfected Cell Line:** 293T

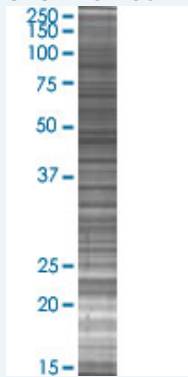
**Plasmid:** pCMV-SSR2 full-length

**Host:** Human

**Theoretical MW (kDa):** 20.5

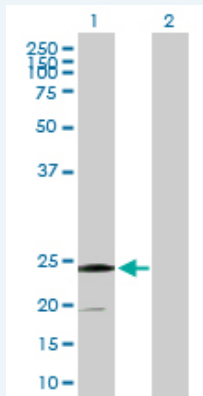
**Quality Control Testing:** Transient overexpression cell lysate was tested with Anti-SSR2 antibody (H00006746-B01P) by Western Blots.

#### SDS-PAGE Gel



SSR2 transfected lysate.

#### Western Blot



Lane 1: SSR2 transfected lysate ( 20.5 KDa)

Lane 2: Non-transfected lysate.

**Storage Buffer:** 1X Sample Buffer (50 mM Tris-HCl, 2% SDS, 10% glycerol, 300 mM 2-mercaptoethanol, 0.01% Bromophenol blue)

**Storage Instruction:** Store at -80°C. Aliquot to avoid repeated freezing and thawing.

**MSDS:**  [Download](#)

### Applications

### Application Image

Western Blot

## Western Blot

### Gene Information

Entrez GeneID: [6746](#)

GeneBank [BC000341](#)  
Accession#:

Protein [AAH00341.1](#)  
Accession#:

Gene Name: SSR2

Gene Alias: DKFZp686F19123,HSD25,TLAP,TRAP-BETA,TRAPB

Gene Description: signal sequence receptor, beta (translocon-associated protein beta)

Omim ID: [600867](#)

Gene Ontology: [Hyperlink](#)

**Gene Summary:** The signal sequence receptor (SSR) is a glycosylated endoplasmic reticulum (ER) membrane receptor associated with protein translocation across the ER membrane. The SSR consists of 2 subunits, a 34-kD glycoprotein (alpha-SSR or SSR1) and a 22-kD glycoprotein (beta-SSR or SSR2). The human beta-signal sequence receptor gene (SSR2) maps to chromosome bands 1q21-q23. [provided by RefSeq]

Other Designations: signal sequence receptor, beta,translocon-associated protein beta

### Related Disease

[Tobacco Use Disorder](#)