



# SZABO SCANDIC

Part of Europa Biosite

## Produktinformation



Forschungsprodukte & Biochemikalien



Zellkultur & Verbrauchsmaterial



Diagnostik & molekulare Diagnostik



Laborgeräte & Service

Weitere Information auf den folgenden Seiten!  
See the following pages for more information!



### Lieferung & Zahlungsart

siehe unsere [Liefer- und Versandbedingungen](#)

### Zuschläge

- Mindermengenzuschlag
- Trockeneiszuschlag
- Gefahrgutzuschlag
- Expressversand

### SZABO-SCANDIC HandelsgmbH

Quellenstraße 110, A-1100 Wien

T. +43(0)1 489 3961-0

F. +43(0)1 489 3961-7

[mail@szabo-scandic.com](mailto:mail@szabo-scandic.com)

[www.szabo-scandic.com](http://www.szabo-scandic.com)

[linkedin.com/company/szaboscandic](https://www.linkedin.com/company/szaboscandic) 

## SSR4 monoclonal antibody (M01), clone 2D3

Catalog # : H00006748-M01

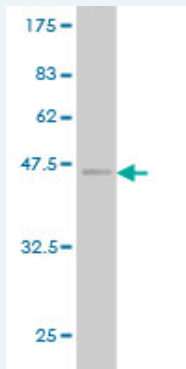
規格 : [ 100 ug ]

[List All](#)

### Specification

<b>Product Description:</b>	Mouse monoclonal antibody raised against a full length recombinant SSR4.
<b>Immunogen:</b>	SSR4 (AAH03371, 24 a.a. ~ 173 a.a) full-length recombinant protein with GST tag. MW of the GST tag alone is 26 KDa.
<b>Sequence:</b>	EACLEPQITPSYYTTSDAVISTETVLIVEISLTCKNRVQNMALYADVGGKQ FPVTRGQDVGRYQVSWSLDHKSAHAGTYEVRFFDEESYLLRKAQRNN EDISIPLFLT/SVDHRGTWNGPWVSTEVLAAAIGLVYYLAFSAKSHIQA
<b>Host:</b>	Mouse
<b>Reactivity:</b>	Human
<b>Isotype:</b>	IgG1 Kappa

**Quality Control Testing:** Antibody Reactive Against Recombinant Protein.



**Storage Buffer:** In 1x PBS, pH 7.4

**Storage Instruction:** Store at -20°C or lower. Aliquot to avoid repeated freezing and thawing.

**MSDS:** [Download](#)

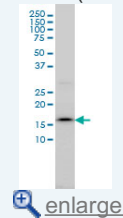
**Datasheet:** [Download](#)

### Applications

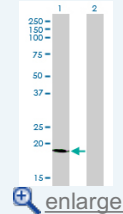
Western Blot (Cell lysate)

### Application Image

Western Blot (Cell lysate)



Western Blot (Transfected lysate)

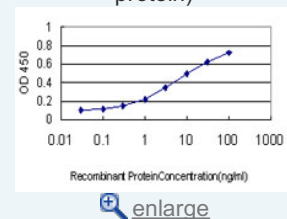


Western Blot (Recombinant protein)

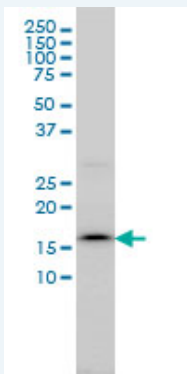
Immunofluorescence



Sandwich ELISA (Recombinant protein)



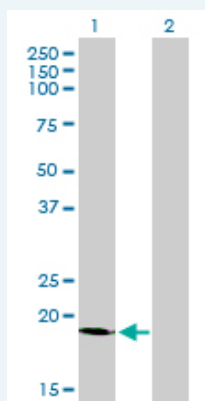
ELISA



SSR4 monoclonal antibody (M01), clone 2D3 Western Blot analysis of SSR4 expression in C32 ( Cat # L002V1 ).

 [Protocol Download](#)

#### Western Blot (Transfected lysate)



Western Blot analysis of SSR4 expression in transfected 293T cell line by SSR4 monoclonal antibody (M01), clone 2D3.

Lane 1: SSR4 transfected lysate(19 kDa).

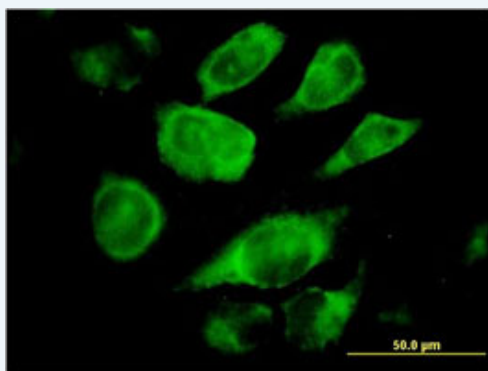
Lane 2: Non-transfected lysate.

 [Protocol Download](#)

#### Western Blot (Recombinant protein)

 [Protocol Download](#)

#### Immunofluorescence

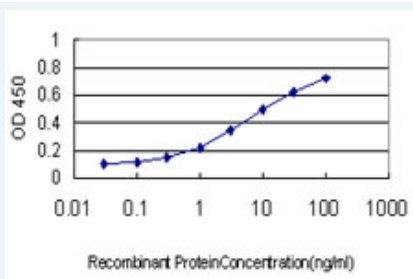


 [enlarge this image](#)

Immunofluorescence of monoclonal antibody to SSR4 on HeLa cell. [antibody concentration 10 ug/ml]

 [Protocol Download](#)

#### Sandwich ELISA (Recombinant protein)



Detection limit for recombinant GST tagged SSR4 is approximately 0.1ng/ml as a capture antibody.

 [Protocol Download](#)

## ELISA

### Gene Information

**Entrez GeneID:** [6748](#)

**GeneBank** [BC003371](#)

**Accession#:**

**Protein** [AAH03371](#)

**Accession#:**

**Gene Name:** SSR4

**Gene Alias:** TRAPD

**Gene Description:** signal sequence receptor, delta (translocon-associated protein delta)

**Omim ID:** [300090](#)

**Gene Ontology:** [Hyperlink](#)

**Gene Summary:** SSR4, also called TRAPD, is assumed to be involved in protein secretion. It is located in the Xq28 region, arranged in a compact head-to-head manner with the IDH3G gene. These two genes are driven by a bidirectional promoter located between them, and encode proteins involved in unrelated biochemical pathways located in different compartments of the cell. The nontranscribed intergenic region represents only 133 bp and is embedded in a CpG island. The CpG island functions as a bidirectional promoter to initiate the transcription of both functionally unrelated genes with distinct expression patterns. SSR4 consists of six exons and is approximately 70 kb telomeric to the ALD gene. Although alternative splicing of exon 5 has not been detected in human SSR4, transcript variants missing the region homologous to human exon 5 have been detected in both *Xenopus laevis* and *Mus musculus*. [provided by RefSeq]

**Other Designations:** OTTHUMP00000025956,OTTHUMP00000025957,OTTHUMP00000025958,signal sequence receptor, delta,translocon-associated protein delta