



SZABO SCANDIC

Part of Europa Biosite

Produktinformation



Forschungsprodukte & Biochemikalien



Zellkultur & Verbrauchsmaterial



Diagnostik & molekulare Diagnostik



Laborgeräte & Service

Weitere Information auf den folgenden Seiten!
See the following pages for more information!



Lieferung & Zahlungsart

siehe unsere [Liefer- und Versandbedingungen](#)

Zuschläge

- Mindermengenzuschlag
- Trockeneiszuschlag
- Gefahrgutzuschlag
- Expressversand

SZABO-SCANDIC HandelsgmbH

Quellenstraße 110, A-1100 Wien

T. +43(0)1 489 3961-0

F. +43(0)1 489 3961-7

mail@szabo-scandic.com

www.szabo-scandic.com

[linkedin.com/company/szaboscandic](https://www.linkedin.com/company/szaboscandic) 

SSTR1 monoclonal antibody (M02), clone 4E3

Catalog # : H00006751-M02

規格 : [100 ug]

[List All](#)

Specification

Product Description:	Mouse monoclonal antibody raised against a partial recombinant SSTR1.
Immunogen:	SSTR1 (AAH35618, 1 a.a. ~ 60 a.a) partial recombinant protein with GST tag. MW of the GST tag alone is 26 KDa.
Sequence:	MFPNGTASSPSSSPSPSPGSCGEGGGSRGPGAGAADGMEEPGRNAS QNGTLSEGQGSAIL
Host:	Mouse
Reactivity:	Human
Isotype:	IgG2a Kappa
Quality Control Testing:	Antibody Reactive Against Recombinant Protein.
Storage Buffer:	In 1x PBS, pH 7.4

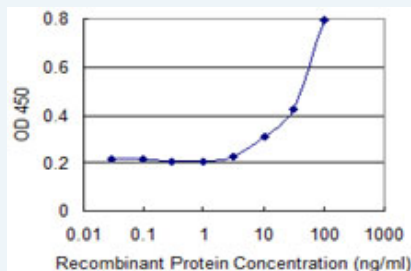
Storage Instruction: Store at -20°C or lower. Aliquot to avoid repeated freezing and thawing.

MSDS: [Download](#)

Datasheet: [Download](#)

Applications

Sandwich ELISA (Recombinant protein)



Detection limit for recombinant GST tagged SSTR1 is 1 ng/ml as a capture antibody.

[Protocol Download](#)

ELISA

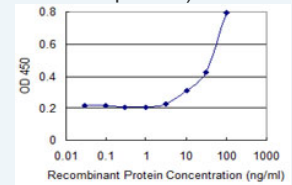
Gene Information

Entrez GeneID: [6751](#)

GeneBank Accession#: [BC035618](#)

Application Image

Sandwich ELISA (Recombinant protein)



[enlarge](#)

ELISA

Protein [AAH35618](#)

Accession#:

Gene Name: SSTR1

Gene Alias: SRIF-2

Gene somatostatin receptor 1

Description:

Omim ID: [182451](#)

Gene Ontology: [Hyperlink](#)

Gene Summary: Somatostatin acts at many sites to inhibit the release of many hormones and other secretory proteins. The biological effects of somatostatin are probably mediated by a family of G protein-coupled receptors that are expressed in a tissue-specific manner. The encoded protein is a member of the superfamily of somatostatin receptors having seven transmembrane segments, and is expressed in highest levels in jejunum and stomach. [provided by RefSeq]

Other G-protein coupled receptor

Designations:

Gene Pathway

[Neuroactive ligand-receptor interaction](#)

Related Disease

[Adenocarcinoma](#) [Breast cancer](#) [Breast Neoplasms](#) [Esophageal Neoplasms](#)
[Genetic Predisposition to Disease](#) [Head and Neck Neoplasms](#) [Mental Disorders](#)
[Neoplasm Recurrence, Local](#) [Neoplasms, Second Primary](#) [Obesity](#)
[Ovarian Failure, Premature](#) [Polycystic Ovary Syndrome](#) [Prostate cancer](#)
[Prostatic Neoplasms](#) [Puberty, Delayed](#) [Puberty, Precocious](#) [Thrombophilia](#)
[Tobacco Use Disorder](#)

[服務條款](#) | [隱私權政策](#) | [著作及商標](#) | [網站地圖](#)

©2016 亞諾法生技股份有限公司 Abnova Corporation. 版權所有.