



SZABO SCANDIC

Part of Europa Biosite

Produktinformation



Forschungsprodukte & Biochemikalien



Zellkultur & Verbrauchsmaterial



Diagnostik & molekulare Diagnostik



Laborgeräte & Service

Weitere Information auf den folgenden Seiten!
See the following pages for more information!



Lieferung & Zahlungsart

siehe unsere [Liefer- und Versandbedingungen](#)

Zuschläge

- Mindermengenzuschlag
- Trockeneiszuschlag
- Gefahrgutzuschlag
- Expressversand

SZABO-SCANDIC HandelsgmbH

Quellenstraße 110, A-1100 Wien

T. +43(0)1 489 3961-0

F. +43(0)1 489 3961-7

mail@szabo-scandic.com

www.szabo-scandic.com

[linkedin.com/company/szaboscandic](https://www.linkedin.com/company/szaboscandic) 

SSTR1 monoclonal antibody (M11), clone 1F7

Catalog # : H00006751-M11

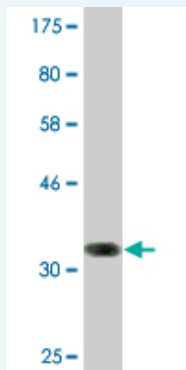
規格 : [100 ug]

[List All](#)

Specification

Product Description:	Mouse monoclonal antibody raised against a partial recombinant SSTR1.
Immunogen:	SSTR1 (AAH35618, 1 a.a. ~ 60 a.a) partial recombinant protein with GST tag. MW of the GST tag alone is 26 KDa.
Sequence:	MFPNGTASSPSSSPSPSPGSCGEGGGSRGPGAGAADGMEEPGRNAS QNGTLSEGQGSAIL
Host:	Mouse
Reactivity:	Human
Isotype:	IgG2b Kappa

Quality Control Testing: Antibody Reactive Against Recombinant Protein.



Western Blot detection against Immunogen (32.23 KDa) .

Storage Buffer: In 1x PBS, pH 7.4

Storage Instruction: Store at -20°C or lower. Aliquot to avoid repeated freezing and thawing.

MSDS: [Download](#)

Datasheet: [Download](#)

Applications

Western Blot (Recombinant protein)

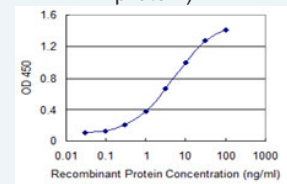
[Protocol Download](#)

Sandwich ELISA (Recombinant protein)

Application Image

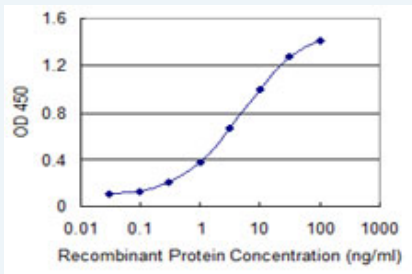
Western Blot (Recombinant protein)

Sandwich ELISA (Recombinant protein)



[enlarge](#)

ELISA



Detection limit for recombinant GST tagged SSTR1 is 0.03 ng/ml as a capture antibody.

 [Protocol Download](#)

ELISA

Gene Information

Entrez GeneID: [6751](#)

GeneBank [BC035618](#)

Accession#:

Protein [AAH35618](#)

Accession#:

Gene Name: SSTR1

Gene Alias: SRIF-2

Gene somatostatin receptor 1

Description:

Omim ID: [182451](#)

Gene Ontology: [Hyperlink](#)

Gene Summary: Somatostatin acts at many sites to inhibit the release of many hormones and other secretory proteins. The biological effects of somatostatin are probably mediated by a family of G protein-coupled receptors that are expressed in a tissue-specific manner. The encoded protein is a member of the superfamily of somatostatin receptors having seven transmembrane segments, and is expressed in highest levels in jejunum and stomach. [provided by RefSeq]

Other G-protein coupled receptor

Designations:

Gene Pathway

[Neuroactive ligand-receptor interaction](#)

Related Disease

[Adenocarcinoma Breast cancer Breast Neoplasms Esophageal Neoplasms Genetic Predisposition to Disease Head and Neck Neoplasms Mental Disorders Neoplasm Recurrence, Local Neoplasms, Second Primary Obesity Ovarian Failure, Premature Polycystic Ovary Syndrome Prostate cancer Prostatic Neoplasms Puberty, Delayed Puberty, Precocious Thrombophilia Tobacco Use Disorder](#)