



SZABO SCANDIC

Part of Europa Biosite

Produktinformation



Forschungsprodukte & Biochemikalien



Zellkultur & Verbrauchsmaterial



Diagnostik & molekulare Diagnostik



Laborgeräte & Service

Weitere Information auf den folgenden Seiten!
See the following pages for more information!



Lieferung & Zahlungsart

siehe unsere [Liefer- und Versandbedingungen](#)

Zuschläge

- Mindermengenzuschlag
- Trockeneiszuschlag
- Gefahrgutzuschlag
- Expressversand

SZABO-SCANDIC HandelsgmbH

Quellenstraße 110, A-1100 Wien

T. +43(0)1 489 3961-0

F. +43(0)1 489 3961-7

mail@szabo-scandic.com

www.szabo-scandic.com

[linkedin.com/company/szaboscandic](https://www.linkedin.com/company/szaboscandic) 

SSTR2 polyclonal antibody (A01)

Catalog # : H00006752-A01

規格 : [50 uL]

List All

Specification

Product Description: Mouse polyclonal antibody raised against a partial recombinant SSTR2.

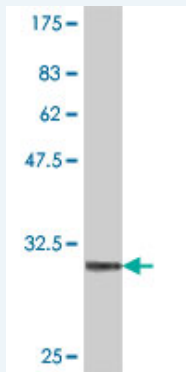
Immunogen: SSTR2 (NP_001041, 316 a.a. ~ 369 a.a) partial recombinant protein with GST tag.

Sequence: SDNFKKSFQNMVLCVKVSGTDDGERSDSKQDKSRLNETTETQRTLLNGDLQTSI

Host: Mouse

Reactivity: Human

Quality Control Testing: Antibody Reactive Against Recombinant Protein.



Western Blot detection against Immunogen (32.05 KDa) .

Storage Buffer: 50 % glycerol

Storage Instruction: Store at -20°C or lower. Aliquot to avoid repeated freezing and thawing.

MSDS: [Download](#)

Datasheet: [Download](#)

Applications

Western Blot (Recombinant protein)

[Protocol Download](#)

ELISA

Gene Information

Entrez GeneID: [6752](#)

GeneBank Accession#: [NM_001050](#)

Application Image

Western Blot (Recombinant protein)

ELISA

Protein [NP_001041](#)

Accession#:

Gene Name: SSTR2

Gene Alias: -

Gene somatostatin receptor 2

Description:

Omim ID: [182452](#)

Gene Ontology: [Hyperlink](#)

Gene Summary: Somatostatin acts at many sites to inhibit the release of many hormones and other secretory proteins. The biologic effects of somatostatin are probably mediated by a family of G protein-coupled receptors that are expressed in a tissue-specific manner. SSTR2 is a member of the superfamily of receptors having seven transmembrane segments and is expressed in highest levels in cerebrum and kidney. [provided by RefSeq]

Other -

Designations:

Gene Pathway

[Neuroactive ligand-receptor interaction](#)

Related Disease

[Acromegaly](#) [Adenocarcinoma](#) [Atherosclerosis](#) [Atherosclerosis](#) [Breast cancer](#) [Breast Neoplasms](#) [Cardiovascular Diseases](#) [Diabetes Mellitus, Type 2](#) [Edema](#) [Esophageal Neoplasms](#) [Genetic Predisposition to Disease](#) [Head and Neck Neoplasms](#) [Insulin Resistance](#) [Mental Disorders](#) [Neoplasm Recurrence, Local](#) [Neoplasms, Second Primary](#) [Obesity](#) [Ovarian Failure, Premature](#) [Polycystic Ovary Syndrome](#)

... see more

[服務條款](#) | [隱私權政策](#) | [著作及商標](#) | [網站地圖](#)

©2016 亞諾法生技股份有限公司 Abnova Corporation. 版權所有.