



SZABO SCANDIC

Part of Europa Biosite

Produktinformation



Forschungsprodukte & Biochemikalien



Zellkultur & Verbrauchsmaterial



Diagnostik & molekulare Diagnostik



Laborgeräte & Service

Weitere Information auf den folgenden Seiten!
See the following pages for more information!



Lieferung & Zahlungsart

siehe unsere [Liefer- und Versandbedingungen](#)

Zuschläge

- Mindermengenzuschlag
- Trockeneiszuschlag
- Gefahrgutzuschlag
- Expressversand

SZABO-SCANDIC HandelsgmbH

Quellenstraße 110, A-1100 Wien

T. +43(0)1 489 3961-0

F. +43(0)1 489 3961-7

mail@szabo-scandic.com

www.szabo-scandic.com

[linkedin.com/company/szaboscandic](https://www.linkedin.com/company/szaboscandic) 

SSTR2 293T Cell Transient Overexpression Lysate(Denatured)

Catalog # : H00006752-T01

規格 : [100 uL]

List All

Specification

Transfected Cell Line: 293T

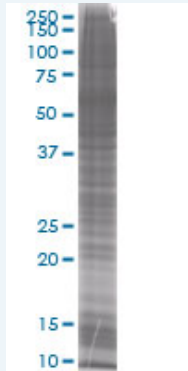
Plasmid: pCMV-SSTR2 full-length

Host: Human

Theoretical MW (kDa): 40.7

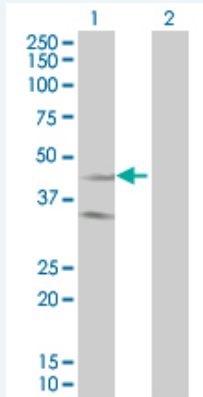
Quality Control Testing: Transient overexpression cell lysate was tested with Anti-SSTR2 antibody ([H00006752-B01](#)) by Western Blots.

SDS-PAGE Gel



SSTR2 transfected lysate

Western Blot



Lane 1: SSTR2 transfected lysate (40.7 KDa).

Lane 2: Non-transfected lysate.

Storage Buffer: 1X Sample Buffer (50 mM Tris-HCl, 2% SDS, 10% glycerol, 300 mM 2-mercaptoethanol, 0.01% Bromophenol blue)

Storage Instruction: Store at -80°C. Aliquot to avoid repeated freezing and thawing.

MSDS:  [Download](#)

Applications

Western Blot

Gene Information

Entrez GeneID: [6752](#)

GeneBank [CF147826](#)
Accession#:

Protein =
Accession#:

Gene Name: SSTR2

Gene Alias: -

Gene Description: somatostatin receptor 2

Omim ID: [182452](#)

Gene Ontology: [Hyperlink](#)

Gene Summary: Somatostatin acts at many sites to inhibit the release of many hormones and other secretory proteins. The biologic effects of somatostatin are probably mediated by a family of G protein-coupled receptors that are expressed in a tissue-specific manner. SSTR2 is a member of the superfamily of receptors having seven transmembrane segments and is expressed in highest levels in cerebrum and kidney. [provided by RefSeq]

Other Designations: -

Gene Pathway

[Neuroactive ligand-receptor interaction](#)

Related Disease

[Acromegaly](#) [Adenocarcinoma](#) [Atherosclerosis](#) [Atherosclerosis](#) [Breast cancer](#) [Breast Neoplasms](#) [Cardiovascular Diseases](#) [Diabetes Mellitus, Type 2](#) [Edema](#) [Esophageal Neoplasms](#) [Genetic Predisposition to Disease](#) [Head and Neck Neoplasms](#) [Insulin Resistance](#) [Mental Disorders](#) [Neoplasm Recurrence, Local](#) [Neoplasms, Second Primary](#) [Obesity](#) [Ovarian Failure, Premature](#) [Polycystic Ovary Syndrome](#)

... see more