



# SZABO SCANDIC

Part of Europa Biosite

## Produktinformation



Forschungsprodukte & Biochemikalien



Zellkultur & Verbrauchsmaterial



Diagnostik & molekulare Diagnostik



Laborgeräte & Service

Weitere Information auf den folgenden Seiten!  
See the following pages for more information!



### Lieferung & Zahlungsart

siehe unsere [Liefer- und Versandbedingungen](#)

### Zuschläge

- Mindermengenzuschlag
- Trockeneiszuschlag
- Gefahrgutzuschlag
- Expressversand

### SZABO-SCANDIC HandelsgmbH

Quellenstraße 110, A-1100 Wien

T. +43(0)1 489 3961-0

F. +43(0)1 489 3961-7

[mail@szabo-scandic.com](mailto:mail@szabo-scandic.com)

[www.szabo-scandic.com](http://www.szabo-scandic.com)

[linkedin.com/company/szaboscandic](https://www.linkedin.com/company/szaboscandic) 

## SS18 monoclonal antibody (M07), clone 1C8

Catalog # : H00006760-M07

規格 : [ 100 ug ]

[List All](#)

### Specification

**Product Description:** Mouse monoclonal antibody raised against a partial recombinant SS18.

**Immunogen:** SS18 (NP\_001007560.1, 116 a.a. ~ 216 a.a) partial recombinant protein with GST tag. MW of the GST tag alone is 26 KDa.

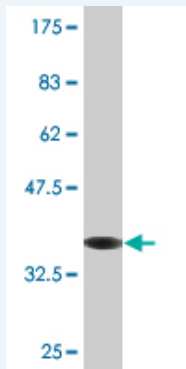
**Sequence:** APHMQNQMNMGQMPGPNHMPMQGPGPNQLNMTNSSMNPSSSHGSMG  
GYNHVPSSQSMPVQ.NQMTMSQGQPMGNYGPRPNMSMQPNQGPM  
HQQPPSQQYN

**Host:** Mouse

**Reactivity:** Human

**Isotype:** IgG2a Kappa

**Quality Control Testing:** Antibody Reactive Against Recombinant Protein.



Western Blot detection against Immunogen (36.85 KDa) .

**Storage Buffer:** In 1x PBS, pH 7.4

**Storage Instruction:** Store at -20°C or lower. Aliquot to avoid repeated freezing and thawing.

**MSDS:** [Download](#)

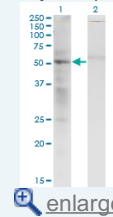
**Datasheet:** [Download](#)

### Applications

Western Blot (Transfected lysate)

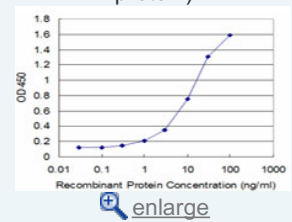
### Application Image

Western Blot (Transfected lysate)

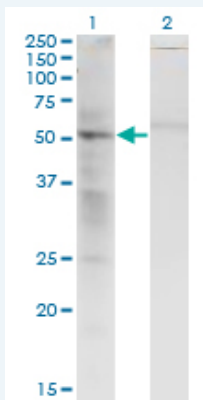


Western Blot (Recombinant protein)

Sandwich ELISA (Recombinant protein)



ELISA



Western Blot analysis of SS18 expression in transfected 293T cell line by SS18 monoclonal antibody (M07), clone 1C8.

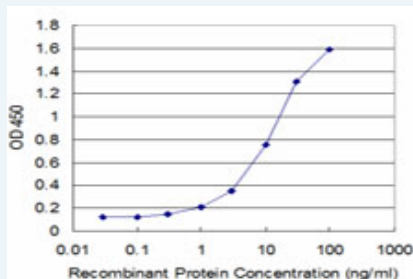
Lane 1: SS18 transfected lysate (Predicted MW: 45.9 kDa).  
Lane 2: Non-transfected lysate.

[Protocol Download](#)

### Western Blot (Recombinant protein)

[Protocol Download](#)

### Sandwich ELISA (Recombinant protein)



Detection limit for recombinant GST tagged SS18 is approximately 0.3ng/ml as a capture antibody.

[Protocol Download](#)

### ELISA

### Gene Information

Entrez GeneID: [6760](#)

GeneBank [NM\\_001007559](#)  
Accession#:

Protein [NP\\_001007560.1](#)  
Accession#:

Gene Name: SS18

Gene Alias: MGC116875, SSXT, SYT, SYT-SSX1, SYT-SSX2

Gene Description: synovial sarcoma translocation, chromosome 18

Omim ID: [600192](#)

Gene Ontology: [Hyperlink](#)

Other Designations: SSXT/SSX4v fusion, SYT/SSX4v fusion protein, synovial sarcoma, translocated to X chromosome

