



# SZABO SCANDIC

Part of Europa Biosite

## Produktinformation



Forschungsprodukte & Biochemikalien



Zellkultur & Verbrauchsmaterial



Diagnostik & molekulare Diagnostik



Laborgeräte & Service

Weitere Information auf den folgenden Seiten!  
See the following pages for more information!



### Lieferung & Zahlungsart

siehe unsere [Liefer- und Versandbedingungen](#)

### Zuschläge

- Mindermengenzuschlag
- Trockeneiszuschlag
- Gefahrgutzuschlag
- Expressversand

### SZABO-SCANDIC HandelsgmbH

Quellenstraße 110, A-1100 Wien

T. +43(0)1 489 3961-0

F. +43(0)1 489 3961-7

[mail@szabo-scandic.com](mailto:mail@szabo-scandic.com)

[www.szabo-scandic.com](http://www.szabo-scandic.com)

[linkedin.com/company/szaboscandic](https://www.linkedin.com/company/szaboscandic) 

# STAT1 purified MaxPab rabbit polyclonal antibody (D01P) MaxPab®

Catalog # : H00006772-D01P

規格 : [ 100 ug ]

[List All](#)

## Specification

**Product Description:** Rabbit polyclonal antibody raised against a full-length human STAT1 protein.

**Immunogen:** STAT1 (AAH02704.1, 1 a.a. ~ 712 a.a) full-length human protein.

**Sequence:**  
 MSQWYELQQLDKFLQVHQLYDDSPMEIRQYLAQWLEKQDWEHAA  
 NDVSFATIRFHDLLSQLDDQYSRFSLENNFLLQHNIRKSKRNLQDNFQED  
 PIQMSMIIYSCLKEERKILENAQRFNQAQSGNIQSTVMLDKQKELDSKVRN  
 VKDKVMCIIEHIKSLQDEYDFKCKTLQNRHETNGVAKSDQKQEQL  
 LLKKMYLMLDNKRKEVVHKIPELLNVTQLTQNALINDELVEWKRRQQSACI  
 GGPPNACLDQLQNWFTVAESLQQVRQQLKLEEELEQKYTYEHPITKN  
 KQVLWDRTFSLFQQLIQSSFVVERQPCMPHPQRPLVLTGQFTVKL  
 RLLVKLQELNYNLKVKVLFDKDVNERNTVKGFRKFNILGTHTKVMNMEES  
 TNGSLAAEFRLQLKEQKNAGTRTNEGPLIVTEELHLSLSETQLCQPG  
 VIDLETTSLPVVISNVSQPSGWASILWYNMLVAEPRNLSFFLTPPCAR  
 WAQLSEVLSWQFSSVTKRGLNVDQLNMLGEKLLGPNASPDGLIPWTRF  
 CKENINDKNFPFWLWIESILELIKHLPLWNDGCIMGFISKERERALLKDQ  
 QPGTFLLRFSESSREGAIFTWVERSQNGGEPDFHAVEPYTKKELSAVT  
 FPDIIIRNYKVMAENIPENPLKYLYPNIDKHAFGKYYSRPKEAPEPMELD  
 GPKGTGYIKTELISVSEV

**Host:** Rabbit

**Reactivity:** Human, Mouse

**Quality Control Testing:** Antibody reactive against mammalian transfected lysate.

**Storage Buffer:** In 1x PBS, pH 7.4

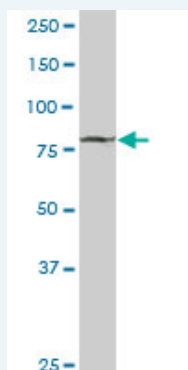
**Storage Instruction:** Store at -20°C or lower. Aliquot to avoid repeated freezing and thawing.

**MSDS:**  [Download](#)

**Datasheet:**  [Download](#)

## Applications

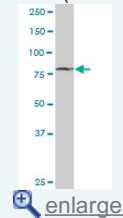
### Western Blot (Tissue lysate)



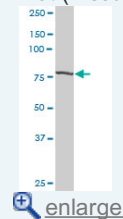
STAT1 MaxPab rabbit polyclonal antibody. Western Blot analysis of STAT1 expression in

## Application Image

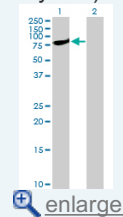
### Western Blot (Tissue lysate)



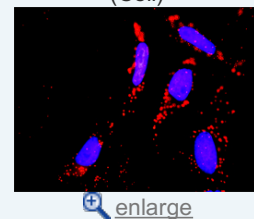
### Western Blot (Tissue lysate)



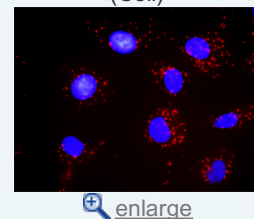
### Western Blot (Transfected lysate)



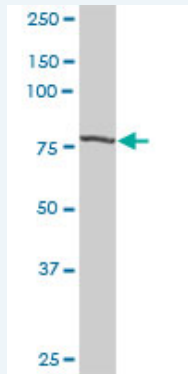
### In situ Proximity Ligation Assay (Cell)



### In situ Proximity Ligation Assay (Cell)

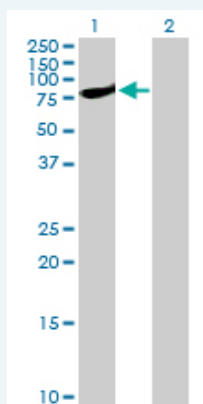


### Western Blot (Tissue lysate)



STAT1 MaxPab rabbit polyclonal antibody. Western Blot analysis of STAT1 expression in mouse liver.

### Western Blot (Transfected lysate)

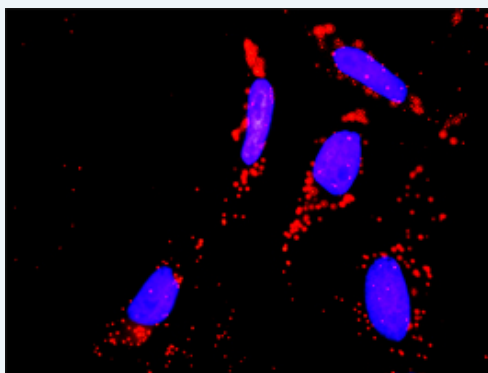


Western Blot analysis of STAT1 expression in transfected 293T cell line ([H00006772-T01](#)) by STAT1 MaxPab polyclonal antibody.

Lane 1: STAT1 transfected lysate(83.00 KDa).

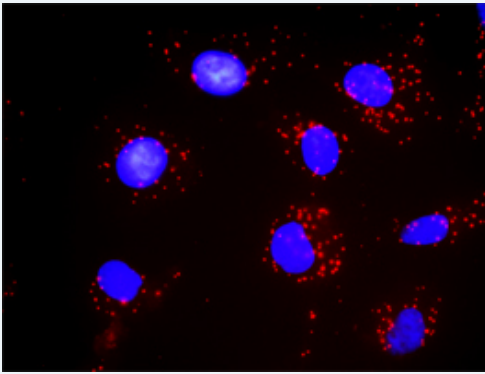
Lane 2: Non-transfected lysate.

### *In situ* Proximity Ligation Assay (Cell)



Proximity Ligation Analysis of protein-protein interactions between STAT1 and ERBB2. HeLa cells were stained with anti-STAT1 rabbit purified polyclonal 1:1200 and anti-ERBB2 mouse monoclonal antibody 1:50. Each red dot represents the detection of protein-protein interaction complex, and nuclei were counterstained with DAPI (blue).

### *In situ* Proximity Ligation Assay (Cell)



Proximity Ligation Analysis of protein-protein interactions between STAT1 and PDGFRB. Mahlavu cells were stained with anti-STAT1 rabbit purified polyclonal 1:1200 and anti-PDGFRB mouse monoclonal antibody 1:50. Each red dot represents the detection of protein-protein interaction complex, and nuclei were counterstained with DAPI (blue).

---

### Gene Information

---

**Entrez GeneID:** [6772](#)

**GeneBank  
Accession#:** [NM\\_139266](#)

**Protein  
Accession#:** [AAH02704.1](#)

**Gene Name:** STAT1

**Gene Alias:** DKFZp686B04100,ISGF-3,STAT91

**Gene  
Description:** signal transducer and activator of transcription 1, 91kDa

**Omim ID:** [209950](#), [600555](#)

**Gene Ontology:** [Hyperlink](#)

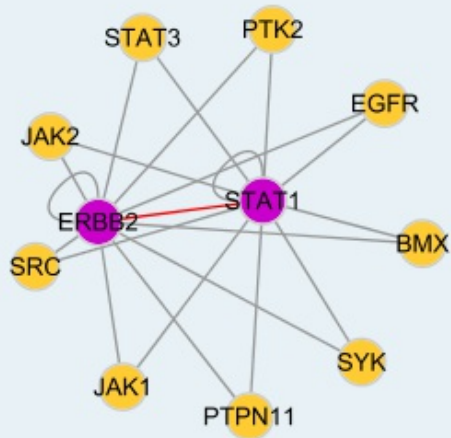
**Gene Summary:** The protein encoded by this gene is a member of the STAT protein family. In response to cytokines and growth factors, STAT family members are phosphorylated by the receptor associated kinases, and then form homo- or heterodimers that translocate to the cell nucleus where they act as transcription activators. This protein can be activated by various ligands including interferon-alpha, interferon-gamma, EGF, PDGF and IL6. This protein mediates the expression of a variety of genes, which is thought to be important for cell viability in response to different cell stimuli and pathogens. Two alternatively spliced transcript variants encoding distinct isoforms have been described. [provided by RefSeq]

**Other  
Designations:** OTTHUMP00000165047,signal transducer and activator of transcription 1,signal transducer and activator of transcription-1,transcription factor ISGF-3 components p91/p84

---

### Interactome

---



### Gene Pathway

[Chemokine signaling pathway](#) [Jak-STAT signaling pathway](#) [Pancreatic cancer Pathways in cancer](#) [Toll-like receptor signaling pathway](#)

### Related Disease

[Arthritis, Reactive](#) [Asthma](#) [Asthma Birth Weight](#) [Breast cancer](#) [Breast Neoplasms](#) [Bronchiolitis, Viral](#) [Campylobacter Infections](#) [Carcinoma, Hepatocellular](#) [Carcinoma, Medullary](#) [Cardiovascular Diseases](#) [Chronic Disease](#) [Diabetes Mellitus, Type 2](#) [Disease Progression](#) [Disease Susceptibility](#) [Edema](#) [Genetic Predisposition to Disease](#) [Glioblastoma](#) [Glioma](#)

... see more

[服務條款](#) | [隱私權政策](#) | [著作及商標](#) | [網站地圖](#)

©2016 亞諾法生技股份有限公司 Abnova Corporation. 版權所有.