



SZABO SCANDIC

Part of Europa Biosite

Produktinformation



Forschungsprodukte & Biochemikalien



Zellkultur & Verbrauchsmaterial



Diagnostik & molekulare Diagnostik



Laborgeräte & Service

Weitere Information auf den folgenden Seiten!
See the following pages for more information!



Lieferung & Zahlungsart

siehe unsere [Liefer- und Versandbedingungen](#)

Zuschläge

- Mindermengenzuschlag
- Trockeneiszuschlag
- Gefahrgutzuschlag
- Expressversand

SZABO-SCANDIC HandelsgmbH

Quellenstraße 110, A-1100 Wien

T. +43(0)1 489 3961-0

F. +43(0)1 489 3961-7

mail@szabo-scandic.com

www.szabo-scandic.com

[linkedin.com/company/szaboscandic](https://www.linkedin.com/company/szaboscandic) 

STAT1 monoclonal antibody (M01), clone 1A8

Catalog # : H00006772-M01

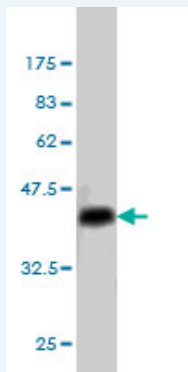
規格 : [100 ug]

[List All](#)

Specification

Product Description:	Mouse monoclonal antibody raised against a partial recombinant STAT1.
Immunogen:	STAT1 (AAH02704, 613 a.a. ~ 712 a.a) partial recombinant protein with GST tag. MW of the GST tag alone is 26 KDa.
Sequence:	TFTWVERSQNGGEPDFHAVEPYTKKELSAVTFPDIIRNYKVMAAENIPEN PLKYLYPNIDKDHAFGKYYSRPKEAPEPEMELDGPKGTYIKTELISVSEV
Host:	Mouse
Reactivity:	Human
Isotype:	IgG2a Kappa

Quality Control Testing: Antibody Reactive Against Recombinant Protein.



Western Blot detection against Immunogen (36.63 KDa) .

Storage Buffer: In 1x PBS, pH 7.4

Storage Instruction: Store at -20°C or lower. Aliquot to avoid repeated freezing and thawing.

MSDS: [Download](#)

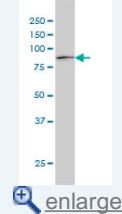
Datasheet: [Download](#)

Applications

Western Blot (Cell lysate)

Application Image

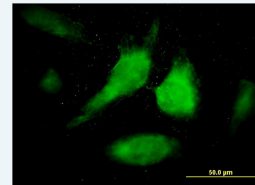
Western Blot (Cell lysate)



[enlarge](#)

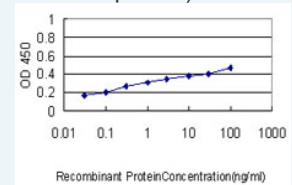
Western Blot (Recombinant protein)

Immunofluorescence



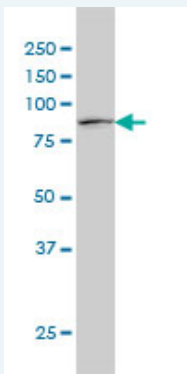
[enlarge](#)

Sandwich ELISA (Recombinant protein)



[enlarge](#)

ELISA



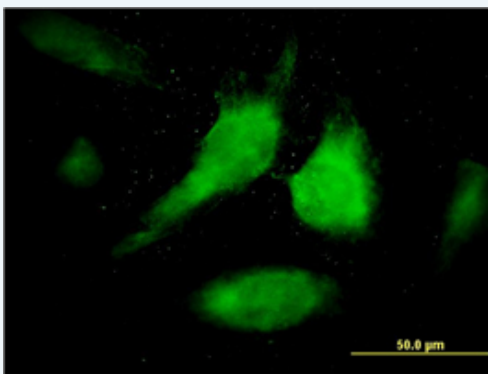
STAT1 monoclonal antibody (M01), clone 1A8 Western Blot analysis of STAT1 expression in HeLa (Cat # L013V1).

[Protocol Download](#)

Western Blot (Recombinant protein)

[Protocol Download](#)

Immunofluorescence

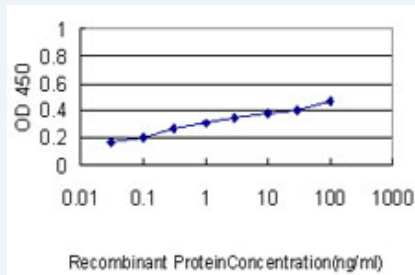


[enlarge this image](#)

Immunofluorescence of monoclonal antibody to STAT1 on HeLa cell. [antibody concentration 40 ug/ml]

[Protocol Download](#)

Sandwich ELISA (Recombinant protein)



Detection limit for recombinant GST tagged STAT1 is approximately 0.1ng/ml as a capture antibody.

[Protocol Download](#)

ELISA

Gene Information

Entrez GeneID: [6772](#)

GeneBank [BC002704](#)
Accession#:

Protein [AAH02704](#)
Accession#:

Gene Name: STAT1

Gene Alias: DKFZp686B04100,ISGF-3,STAT91

Gene Description: signal transducer and activator of transcription 1, 91kDa

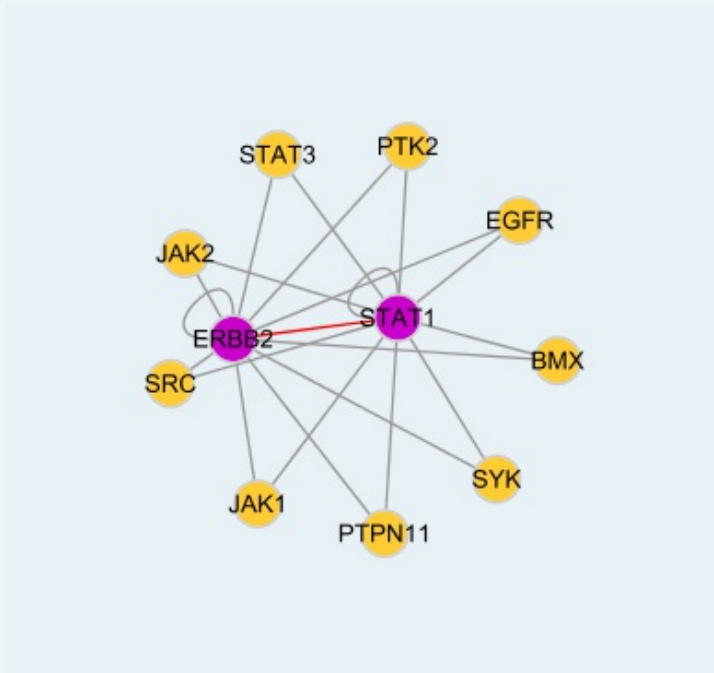
Omim ID: [209950](#), [600555](#)

Gene Ontology: [Hyperlink](#)

Gene Summary: The protein encoded by this gene is a member of the STAT protein family. In response to cytokines and growth factors, STAT family members are phosphorylated by the receptor associated kinases, and then form homo- or heterodimers that translocate to the cell nucleus where they act as transcription activators. This protein can be activated by various ligands including interferon-alpha, interferon-gamma, EGF, PDGF and IL6. This protein mediates the expression of a variety of genes, which is thought to be important for cell viability in response to different cell stimuli and pathogens. Two alternatively spliced transcript variants encoding distinct isoforms have been described. [provided by RefSeq]

Other Designations: OTTHUMP00000165047, signal transducer and activator of transcription 1, signal transducer and activator of transcription-1, transcription factor ISGF-3 components p91/p84

Interactome



Gene Pathway

[Chemokine signaling pathway](#) [Jak-STAT signaling pathway](#) [Pancreatic cancer Pathways in cancer](#) [Toll-like receptor signaling pathway](#)

Related Disease

[Arthritis](#), [Reactive Asthma](#) [Asthma](#) [Birth Weight](#) [Breast cancer](#) [Breast Neoplasms](#) [Bronchiolitis](#), [Viral](#) [Campylobacter Infections](#) [Carcinoma, Hepatocellular](#) [Carcinoma, Medullary](#) [Cardiovascular Diseases](#) [Chronic Disease](#) [Diabetes Mellitus, Type 2](#) [Disease Progression](#) [Disease Susceptibility](#) [Edema](#) [Genetic Predisposition to Disease](#) [Glioblastoma](#) [Glioma](#)

... see more

