



SZABO SCANDIC

Part of Europa Biosite

Produktinformation



Forschungsprodukte & Biochemikalien



Zellkultur & Verbrauchsmaterial



Diagnostik & molekulare Diagnostik



Laborgeräte & Service

Weitere Information auf den folgenden Seiten!
See the following pages for more information!



Lieferung & Zahlungsart

siehe unsere [Liefer- und Versandbedingungen](#)

Zuschläge

- Mindermengenzuschlag
- Trockeneiszuschlag
- Gefahrgutzuschlag
- Expressversand

SZABO-SCANDIC HandelsgmbH

Quellenstraße 110, A-1100 Wien

T. +43(0)1 489 3961-0

F. +43(0)1 489 3961-7

mail@szabo-scandic.com

www.szabo-scandic.com

[linkedin.com/company/szaboscandic](https://www.linkedin.com/company/szaboscandic) 

STAT5A MaxPab mouse polyclonal antibody (B01) MaxPab®

Catalog # : H00006776-B01

規格 : [50 uL]

[List All](#)

Specification

Product Description: Mouse polyclonal antibody raised against a full-length human STAT5A protein.

Immunogen: STAT5A (NP_003143.2, 1 a.a. ~ 794 a.a) full-length human protein.

Sequence:
 MAGWIAQQQLQGDALRQMQLVYGQHFPIEVRHYLAQWIESQPWDAIDL
 DNPQDRAQATQLLEGLVQELQKKAHQVGEDGFLLKIKLGHYATQLQK
 TYDRCPLELVRCIRHILYNEQRLVREANNCSPPAGILVDAMSQKHLQINQT
 FEELRLVTQDTENELKKLQQTQEYFIIQYQESLRIQAQFAQLAQLSPQER
 LSRETALQQKQVSLQAWLQREAQTLQQYRVELAEKHQKTLQLLRKQQT
 IILDDELIQWKRRQQLAGNGGPPGSLDVLQSWCEKLAEIWQNRQQIRR
 AEHLCCQLPIPGPVEEMLAEVNATITDIISALVTSTFIIKQPPQVLKTQTKF
 AATVRLLVGGKLVNVMNPPQVKATIISEQQAKSLLKNENTRNECSGEILNN
 CCVMEYHQATGTLSAHFRNMSLKRIKRADRRGAESVTEEFKTVLFESQF
 SVGSNELVFQVKTLVWVIMHGSQDHNATATVLWDNAFAEPGRVPFA
 VPKVLPQALCEALNMKFKAEVQSNRGLTKENLVFLAQKLFNNSSSHLE
 DYSGLSVSWSQFNRENLPGWNYTFWQWFDGVMVLLKHHKPHWVNDG
 AILGFVNKQQAHDLLINKPDGTFLLRFSDSEIGGITIAWKFDSPERNLWNL
 KPFTTRDFSIRSLADRLGDSLIIYVFPDRPKDEVFSKYYPVLAKAVDG
 YVKPQIKQVPEFVNASADAGGSSATYMDQAPSPAVCPQAPYNYMYPQN
 PDHVLDDQDGEFDLDETMDVARHVEELLRRPMSLDSRLSPPAGLFTSA
 RGSLS

Host: Mouse

Reactivity: Human, Mouse, Rat

Quality Control Testing: Antibody reactive against mammalian transfected lysate.

Storage Buffer: No additive

Storage Instruction: Store at -20°C or lower. Aliquot to avoid repeated freezing and thawing.

Note: For IHC and IF applications, antibody purification with Protein A will be needed prior to use.

MSDS: [Download](#)

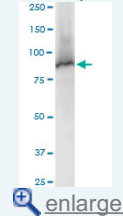
Datasheet: [Download](#)

Applications

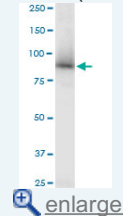
Western Blot (Cell lysate)

Application Image

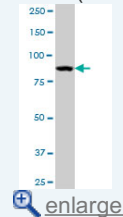
Western Blot (Cell lysate)



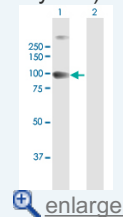
Western Blot (Cell lysate)



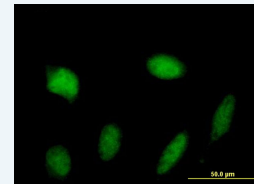
Western Blot (Cell lysate)

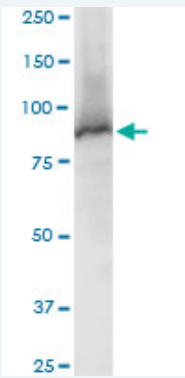


Western Blot (Transfected lysate)



Immunofluorescence

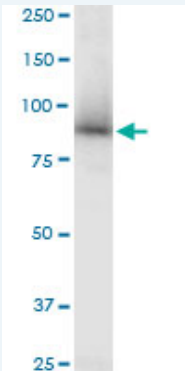




STAT5A MaxPab polyclonal antibody. Western Blot analysis of STAT5A expression in PC-12.

 [Protocol Download](#)

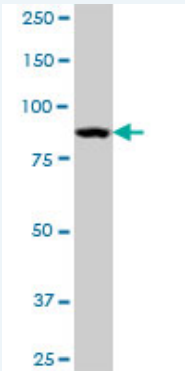
Western Blot (Cell lysate)




STAT5A MaxPab polyclonal antibody. Western Blot analysis of STAT5A expression in Raw 264.7.

 [Protocol Download](#)

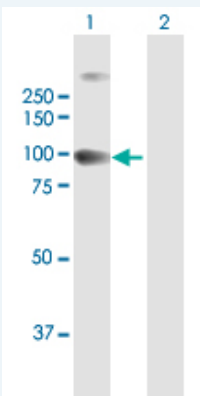
Western Blot (Cell lysate)



STAT5A MaxPab polyclonal antibody. Western Blot analysis of STAT5A expression in MCF-7.

 [Protocol Download](#)

Western Blot (Transfected lysate)

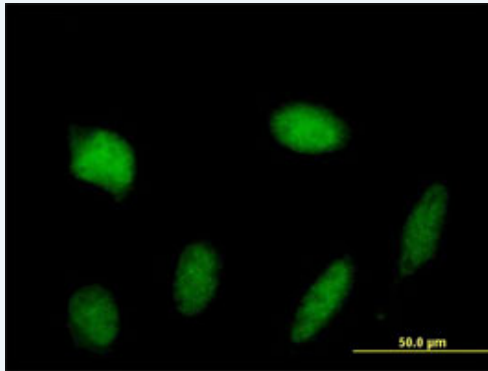


Western Blot analysis of STAT5A expression in transfected 293T cell line (H00006776-T01) by STAT5A MaxPab polyclonal antibody.

Lane 1: STAT5A transfected lysate(87.34 KDa).
Lane 2: Non-transfected lysate.


 [Protocol Download](#)

Immunofluorescence



 enlarge this image

Immunofluorescence of purified MaxPab antibody to STAT5A on HeLa cell. [antibody concentration 10 ug/ml]

 [Protocol Download](#)

Gene Information

Entrez GeneID: [6776](#)

GeneBank [NM_003152.2](#)
Accession#:

Protein [NP_003143.2](#)
Accession#:

Gene Name: STAT5A

Gene Alias: MGF,STAT5

Gene [signal transducer and activator of transcription 5A](#)
Description:

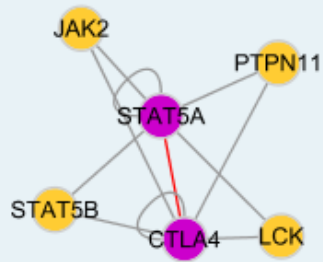
Omim ID: [601511](#)

Gene Ontology: [Hyperlink](#)

Gene Summary: The protein encoded by this gene is a member of the STAT family of transcription factors. In response to cytokines and growth factors, STAT family members are phosphorylated by the receptor associated kinases, and then form homo- or heterodimers that translocate to the cell nucleus where they act as transcription activators. This protein is activated by, and mediates the responses of many cell ligands, such as IL2, IL3, IL7 GM-CSF, erythropoietin, thrombopoietin, and different growth hormones. Activation of this protein in myeloma and lymphoma associated with a TEL/JAK2 gene fusion is independent of cell stimulus and has been shown to be essential for the tumorigenesis. The mouse counterpart of this gene is found to induce the expression of BCL2L1/BCL-X(L), which suggests the antiapoptotic function of this gene in cells. [provided by RefSeq]

Other [-](#)
Designations:

Interactome



Gene Pathway

[Acute myeloid leukemia](#) [Chronic myeloid leukemia](#) [ErbB signaling pathway](#)
[Jak-STAT signaling pathway](#) [Pathways in cancer](#)

Related Disease

[Asthma](#) [Asthma](#) [Birth Weight](#) [Breast cancer](#) [Breast Neoplasms](#) [Bronchiolitis, Viral](#)
[Carcinoma, Hepatocellular](#) [Disease Progression](#) [Genetic Predisposition to Disease](#)
[Glioblastoma](#) [Glioma](#) [Hepatitis C](#) [Infant, Premature, Diseases](#) [Leukemia](#)
[Leukemia, Myeloid, Acute](#) [Liver Neoplasms](#) [Lupus Erythematosus, Systemic](#)
[Meningeal Neoplasms](#) [Meningioma](#)

... see more

[服務條款](#) | [隱私權政策](#) | [著作及商標](#) | [網站地圖](#)

©2016 亞諾法生技股份有限公司 Abnova Corporation. 版權所有.