



SZABO SCANDIC

Part of Europa Biosite

Produktinformation



Forschungsprodukte & Biochemikalien



Zellkultur & Verbrauchsmaterial



Diagnostik & molekulare Diagnostik



Laborgeräte & Service

Weitere Information auf den folgenden Seiten!
See the following pages for more information!



Lieferung & Zahlungsart

siehe unsere [Liefer- und Versandbedingungen](#)

Zuschläge

- Mindermengenzuschlag
- Trockeneiszuschlag
- Gefahrgutzuschlag
- Expressversand

SZABO-SCANDIC HandelsgmbH

Quellenstraße 110, A-1100 Wien

T. +43(0)1 489 3961-0

F. +43(0)1 489 3961-7

mail@szabo-scandic.com

www.szabo-scandic.com

[linkedin.com/company/szaboscandic](https://www.linkedin.com/company/szaboscandic) 

STAT5A purified MaxPab rabbit polyclonal antibody (D01P) MaxPab®

Catalog # : H00006776-D01P

規格 : [100 ug]

[List All](#)

Specification

Product Description: Rabbit polyclonal antibody raised against a full-length human STAT5A protein.

Immunogen: STAT5A (NP_003143.2, 1 a.a. ~ 794 a.a) full-length human protein.

Sequence:
MAGWIIQAQQQLQGDALRQMQLVLYGQHFPIEVRHYLAQWIESQPWDAIDL
DNPQDRAQATQLLEGLVQELQKKAHQVGEDGFLLKIKLGHYATQLQK
TYDRCPLELVRCIRHILYNEQRLVREANNCSPPAGILVDAMSQKHLQINQT
FEELRLVTQDTENELKKLQQTQEYFIQYQESLRIQAQFAQLAQLSPQER
LSRETALQQKQVSLEAWLQREAQTLQQYRVELAEKHQKTLQLLRKQQT
IILDDELIQWKRRQQLAGNGGPPGEGSLDVLQSWCEKLAEIWQNRQQIRR
AEHLCCQQLPIGPVEEMLAEVNATITDIISALVTSTFIIKQPPQVLKTQTKF
AATVRLLVGGKLVNVMNPPQVKATIISEQQAKSLLKNENTRNECSGEILNN
CCVMEYHQATGTLSAHFRNMSLKRIKRADRRGAESVTEEFKTVLFESEQF
SVGSNELVFQVKTLSLPVVVIMHGSQDHNATATVLWDNAFAEPGRVPFA
VPDKVLWPQLCEALNMKFKAEVQSNRGLTKENLVFLAQKLFNNSSSHLE
DYSGLSVSWSQFNRENLPGWNYTFWQWFDGVMVLLKHHKPHWNDG
AILGFVNKQQAHDLLINKPDGTFLLRFSDSEIGGITIAWKFDSPERNLWNL
KPFTRDFSIIRSLADRLGDSLIIYVFPDRPKDEVFSKYYPVLAKAVDG
YVKPQIKQVPEFVNASADAGGSSATYMDQAPSPAVCPQAPYNYMYPQN
PDHVLDDQDGEFDLDETMDVARHVEELLRRPMDSLDSRLSPPAGLFTSAR
GSLSL

Host: Rabbit

Reactivity: Human

Quality Control Testing: Antibody reactive against mammalian transfected lysate.

Storage Buffer: In 1x PBS, pH 7.4

Storage Instruction: Store at -20°C or lower. Aliquot to avoid repeated freezing and thawing.

MSDS: [Download](#)

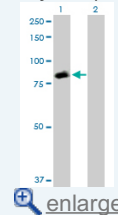
Datasheet: [Download](#)

Applications

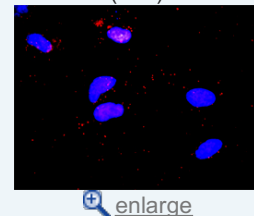
Western Blot (Transfected lysate)

Application Image

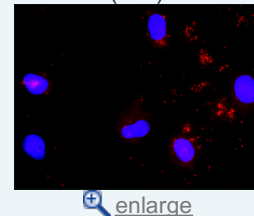
Western Blot (Transfected lysate)

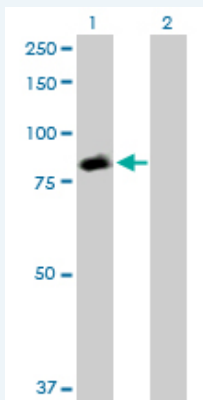


In situ Proximity Ligation Assay (Cell)



In situ Proximity Ligation Assay (Cell)



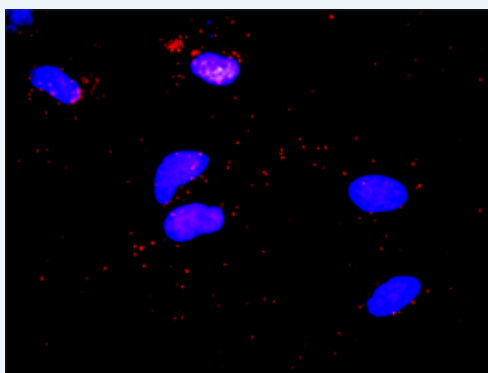


Western Blot analysis of STAT5A expression in transfected 293T cell line ([H00006776-T02](#)) by STAT5A MaxPab polyclonal antibody.

Lane 1: STAT5A transfected lysate(90.60 KDa).
Lane 2: Non-transfected lysate.

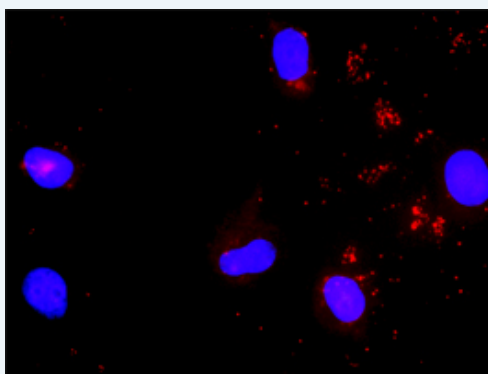
 Protocol Download

***In situ* Proximity Ligation Assay (Cell)**



Proximity Ligation Analysis of protein-protein interactions between STAT5A and CTLA4. HeLa cells were stained with anti-STAT5A rabbit purified polyclonal 1:1200 and anti-CTLA4 mouse monoclonal antibody 1:50. Each red dot represents the detection of protein-protein interaction complex, and nuclei were counterstained with DAPI (blue).

***In situ* Proximity Ligation Assay (Cell)**



Proximity Ligation Analysis of protein-protein interactions between STAT5A and SHC1. Mahlavu cells were stained with anti-STAT5A rabbit purified polyclonal 1:1200 and anti-SHC1 mouse monoclonal antibody 1:50. Each red dot represents the detection of protein-protein interaction complex, and nuclei were counterstained with DAPI (blue).

Gene Information

Entrez GeneID: [6776](#)

GeneBank [NM_003152.2](#)

Accession#:

Protein [NP_003143.2](#)

Accession#:

Gene Name: STAT5A

Gene Alias: MGF,STAT5

Gene Description: signal transducer and activator of transcription 5A

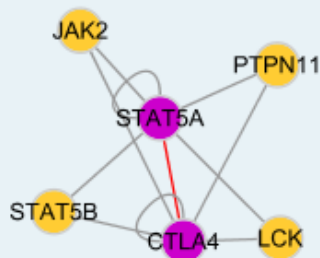
Omim ID: [601511](#)

Gene Ontology: [Hyperlink](#)

Gene Summary: The protein encoded by this gene is a member of the STAT family of transcription factors. In response to cytokines and growth factors, STAT family members are phosphorylated by the receptor associated kinases, and then form homo- or heterodimers that translocate to the cell nucleus where they act as transcription activators. This protein is activated by, and mediates the responses of many cell ligands, such as IL2, IL3, IL7 GM-CSF, erythropoietin, thrombopoietin, and different growth hormones. Activation of this protein in myeloma and lymphoma associated with a TEL/JAK2 gene fusion is independent of cell stimulus and has been shown to be essential for the tumorigenesis. The mouse counterpart of this gene is found to induce the expression of BCL2L1/BCL-X(L), which suggests the antiapoptotic function of this gene in cells. [provided by RefSeq]

Other Designations: -

Interactome



Gene Pathway

[Acute myeloid leukemia](#) [Chronic myeloid leukemia](#) [ErbB signaling pathway](#)
[Jak-STAT signaling pathway](#) [Pathways in cancer](#)

Related Disease

[Asthma](#) [Asthma](#) [Birth Weight](#) [Breast cancer](#) [Breast Neoplasms](#) [Bronchiolitis](#), [Viral Carcinoma](#), [Hepatocellular Disease](#) [Progression](#) [Genetic Predisposition to Disease](#)
[Glioblastoma](#) [Glioma](#) [Hepatitis C](#) [Infant, Premature, Diseases](#) [Leukemia](#)
[Leukemia, Myeloid, Acute](#) [Liver Neoplasms](#) [Lupus Erythematosus, Systemic](#)
[Meningeal Neoplasms](#) [Meningioma](#)

... see more

