



# SZABO SCANDIC

Part of Europa Biosite

## Produktinformation



Forschungsprodukte & Biochemikalien



Zellkultur & Verbrauchsmaterial



Diagnostik & molekulare Diagnostik



Laborgeräte & Service

Weitere Information auf den folgenden Seiten!  
See the following pages for more information!



### Lieferung & Zahlungsart

siehe unsere [Liefer- und Versandbedingungen](#)

### Zuschläge

- Mindermengenzuschlag
- Trockeneiszuschlag
- Gefahrgutzuschlag
- Expressversand

### SZABO-SCANDIC HandelsgmbH

Quellenstraße 110, A-1100 Wien

T. +43(0)1 489 3961-0

F. +43(0)1 489 3961-7

[mail@szabo-scandic.com](mailto:mail@szabo-scandic.com)

[www.szabo-scandic.com](http://www.szabo-scandic.com)

[linkedin.com/company/szaboscandic](https://www.linkedin.com/company/szaboscandic) 

## STAT5A monoclonal antibody (M02), clone 1B12

Catalog # : H00006776-M02

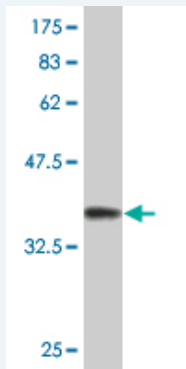
規格 : [ 100 ug ]

[List All](#)

### Specification

<b>Product Description:</b>	Mouse monoclonal antibody raised against a partial recombinant STAT5A.
<b>Immunogen:</b>	STAT5A (AAH27036, 1 a.a. ~ 104 a.a) partial recombinant protein with GST tag. MW of the GST tag alone is 26 KDa.
<b>Sequence:</b>	MAGWIAAQQQLQGDALRQMQLVLYGQHFPPIEVRYLAQWIESQPWDAIDL DNPQDRAQATQLLEGLVQELQKKAHQVGEDGFLKIKLGHYATQLQK TYDRCPLE
<b>Host:</b>	Mouse
<b>Reactivity:</b>	Human
<b>Isotype:</b>	IgG1 Kappa

**Quality Control Testing:** Antibody Reactive Against Recombinant Protein.



Western Blot detection against Immunogen (37.07 KDa) .

**Storage Buffer:** In 1x PBS, pH 7.4

**Storage Instruction:** Store at -20°C or lower. Aliquot to avoid repeated freezing and thawing.

**MSDS:** [Download](#)

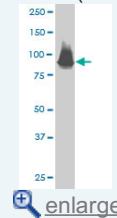
**Datasheet:** [Download](#)

### Applications

Western Blot (Cell lysate)

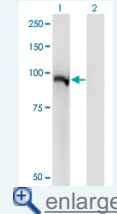
### Application Image

Western Blot (Cell lysate)



[enlarge](#)

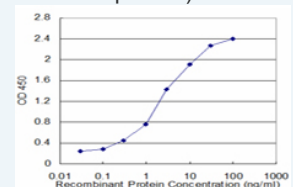
Western Blot (Transfected lysate)



[enlarge](#)

Western Blot (Recombinant protein)

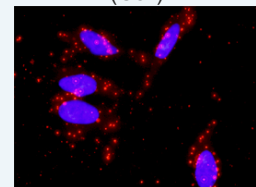
Sandwich ELISA (Recombinant protein)



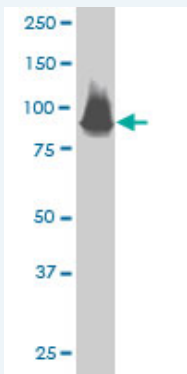
[enlarge](#)

ELISA

*In situ* Proximity Ligation Assay (Cell)



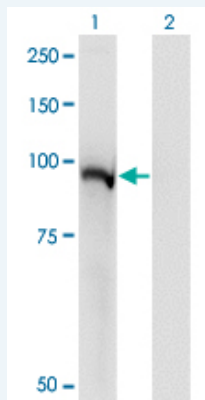
[enlarge](#)



STAT5A monoclonal antibody (M02), clone 1B12 Western Blot analysis of STAT5A expression in k-562 ( Cat # L009V1 ).

[Protocol Download](#)

#### Western Blot (Transfected lysate)



Western Blot analysis of STAT5A expression in transfected 293T cell line by STAT5A monoclonal antibody (M02), clone 1B12.

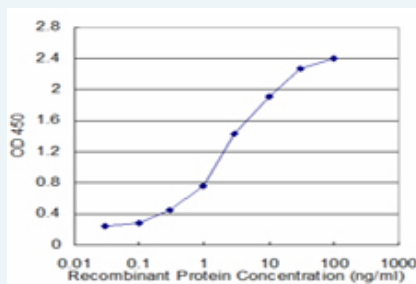
Lane 1: STAT5A transfected lysate (Predicted MW: 90.6 kDa).  
Lane 2: Non-transfected lysate.

[Protocol Download](#)

#### Western Blot (Recombinant protein)

[Protocol Download](#)

#### Sandwich ELISA (Recombinant protein)

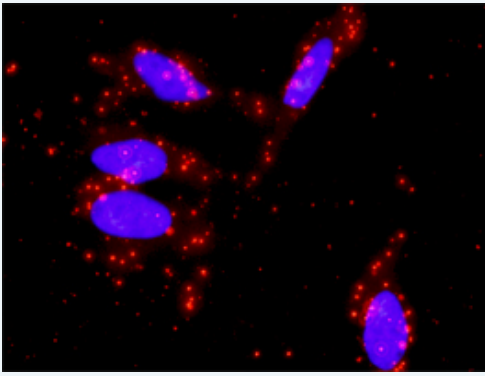


Detection limit for recombinant GST tagged STAT5A is approximately 0.1 ng/ml as a capture antibody.

[Protocol Download](#)

#### ELISA

#### *In situ* Proximity Ligation Assay (Cell)



Proximity Ligation Analysis of protein-protein interactions between STAT1 and STAT5A. HeLa cells were stained with anti-STAT1 rabbit purified polyclonal 1:1200 and anti-STAT5A mouse monoclonal antibody 1:50. Each red dot represents the detection of protein-protein interaction complex, and nuclei were counterstained with DAPI (blue).

---

### Gene Information

---

**Entrez GeneID:** [6776](#)

**GeneBank Accession#:** [BC027036](#)

**Protein Accession#:** [AAH27036](#)

**Gene Name:** STAT5A

**Gene Alias:** MGF,STAT5

**Gene Description:** signal transducer and activator of transcription 5A

**Omim ID:** [601511](#)

**Gene Ontology:** [Hyperlink](#)

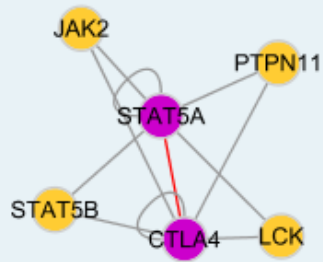
**Gene Summary:** The protein encoded by this gene is a member of the STAT family of transcription factors. In response to cytokines and growth factors, STAT family members are phosphorylated by the receptor associated kinases, and then form homo- or heterodimers that translocate to the cell nucleus where they act as transcription activators. This protein is activated by, and mediates the responses of many cell ligands, such as IL2, IL3, IL7 GM-CSF, erythropoietin, thrombopoietin, and different growth hormones. Activation of this protein in myeloma and lymphoma associated with a TEL/JAK2 gene fusion is independent of cell stimulus and has been shown to be essential for the tumorigenesis. The mouse counterpart of this gene is found to induce the expression of BCL2L1/BCL-X(L), which suggests the antiapoptotic function of this gene in cells. [provided by RefSeq]

**Other Designations:** -

---

### Interactome

---



### Gene Pathway

[Acute myeloid leukemia](#) [Chronic myeloid leukemia](#) [ErbB signaling pathway](#)  
[Jak-STAT signaling pathway](#) [Pathways in cancer](#)

### Related Disease

[Asthma](#) [Asthma](#) [Birth Weight](#) [Breast cancer](#) [Breast Neoplasms](#) [Bronchiolitis, Viral](#)  
[Carcinoma, Hepatocellular](#) [Disease Progression](#) [Genetic Predisposition to Disease](#)  
[Glioblastoma](#) [Glioma](#) [Hepatitis C](#) [Infant, Premature, Diseases](#) [Leukemia](#)  
[Leukemia, Myeloid, Acute](#) [Liver Neoplasms](#) [Lupus Erythematosus, Systemic](#)  
[Meningeal Neoplasms](#) [Meningioma](#)

[... see more](#)

[服務條款](#) | [隱私權政策](#) | [著作及商標](#) | [網站地圖](#)

©2016 亞諾法生技股份有限公司 Abnova Corporation. 版權所有.