



# SZABO SCANDIC

Part of Europa Biosite

## Produktinformation



Forschungsprodukte & Biochemikalien



Zellkultur & Verbrauchsmaterial



Diagnostik & molekulare Diagnostik



Laborgeräte & Service

Weitere Information auf den folgenden Seiten!  
See the following pages for more information!



### Lieferung & Zahlungsart

siehe unsere [Liefer- und Versandbedingungen](#)

### Zuschläge

- Mindermengenzuschlag
- Trockeneiszuschlag
- Gefahrgutzuschlag
- Expressversand

### SZABO-SCANDIC HandelsgmbH

Quellenstraße 110, A-1100 Wien

T. +43(0)1 489 3961-0

F. +43(0)1 489 3961-7

[mail@szabo-scandic.com](mailto:mail@szabo-scandic.com)

[www.szabo-scandic.com](http://www.szabo-scandic.com)

[linkedin.com/company/szaboscandic](https://www.linkedin.com/company/szaboscandic) 

## STAT5B MaxPab mouse polyclonal antibody (B01) MaxPab®

Catalog # : H00006777-B01

規格 : [ 50 uL ]

[List All](#)

### Specification

**Product Description:** Mouse polyclonal antibody raised against a full-length human STAT5B protein.

**Immunogen:** STAT5B (AAH20868.1, 1 a.a. ~ 390 a.a) full-length human protein.

**Sequence:**  
 MAVWIAQQQLQGEALHQMQUALYGQHFPIEVRHYLSQWIESQAWDSVDL  
 DNPQENIKATQLLEGLVQELQKKAHQVGEDGFLLKIKLGHYATQLQNTY  
 DRCPMELVRCIRHILYNEQRLVREANNSSPAGSLADAMSQKHLQINQTF  
 EELRLVTQDTENELKKLQQTQEYFIIQYQESLRIQAQFGPLAQLSPQERL  
 SRETALQKKQVSLEAWLQREAQTLQQYRVELAEKHQKTLQLLRKQQTII  
 LDDELIQWKRRQQLAGNGGPPEGSLDVLQSWCEKLAEIWQNRQQIRRA  
 EHLCCQLPIPGPVEEMLAEVNATITDIISALVTSTFIIKQPPQVLKTQTKFA  
 ATVRLLVGGKLVNVMNPPQVKATIISEQQAKSLLKNENTRK

**Host:** Mouse

**Reactivity:** Human

**Quality Control Testing:** Antibody reactive against mammalian transfected lysate.

**Storage Buffer:** No additive

**Storage Instruction:** Store at -20°C or lower. Aliquot to avoid repeated freezing and thawing.

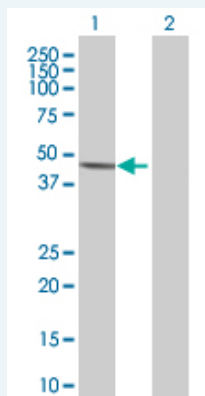
**Note:** For IHC and IF applications, antibody purification with Protein A will be needed prior to use.

**MSDS:**  [Download](#)

**Datasheet:**  [Download](#)

### Applications

#### Western Blot (Transfected lysate)

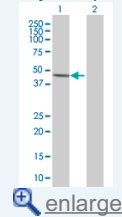


Western Blot analysis of STAT5B expression in transfected 293T cell line (H00006777-T01) by STAT5B MaxPab polyclonal antibody.

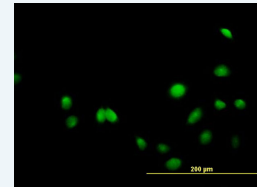
Lane 1: STAT5B transfected lysate(42.9 kDa).

### Application Image

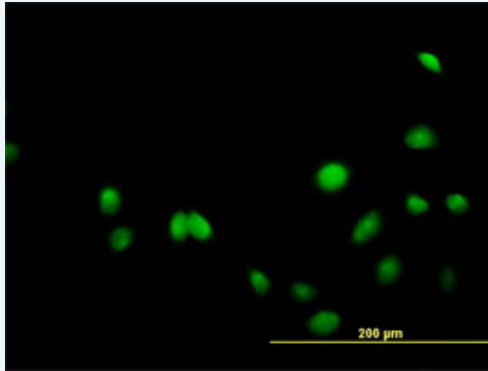
#### Western Blot (Transfected lysate)




#### Immunofluorescence



### Immunofluorescence



 [enlarge this image](#)

Immunofluorescence of purified MaxPab antibody to STAT5B on HeLa cell. [antibody concentration 10 ug/ml]

### Gene Information

Entrez GeneID: [6777](#)

GeneBank [BC020868.1](#)  
Accession#:

Protein [AAH20868.1](#)  
Accession#:

Gene Name: STAT5B

Gene Alias: STAT5

Gene Description: signal transducer and activator of transcription 5B

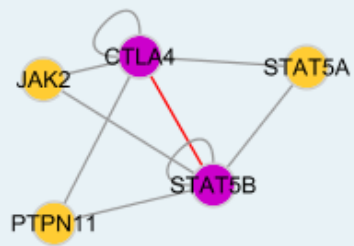
Omim ID: [245590](#), [604260](#)

Gene Ontology: [Hyperlink](#)

**Gene Summary:** The protein encoded by this gene is a member of the STAT family of transcription factors. In response to cytokines and growth factors, STAT family members are phosphorylated by the receptor associated kinases, and then form homo- or heterodimers that translocate to the cell nucleus where they act as transcription activators. This protein mediates the signal transduction triggered by various cell ligands, such as IL2, IL4, CSF 1, and different growth hormones. It has been shown to be involved in diverse biological processes, such as TCR signaling, apoptosis, adult mammary gland development, and sexual dimorphism of liver gene expression. This gene was found to fuse to retinoic acid receptor-alpha (RARA) gene in a small subset of acute promyelocytic leukemias (APLL). The dysregulation of the signaling pathways mediated by this protein may be the cause of the APLL. [provided by RefSeq]

Other Designations: transcription factor STAT5B

### Interactome



### Gene Pathway

[Acute myeloid leukemia](#) [Chemokine signaling pathway](#) [Chronic myeloid leukemia](#)  
[ErbB signaling pathway](#) [Jak-STAT signaling pathway](#) [Pathways in cancer](#)

### Related Disease

[Birth Weight](#) [Breast cancer](#) [Breast Neoplasms](#) [Cardiovascular Diseases](#) [Cleft Lip](#)  
[Cleft Palate](#) [Diabetes Mellitus, Type 2](#) [Edema](#) [Genetic Predisposition to Disease](#)  
[Glioblastoma](#) [Glioma](#) [Leukemia](#) [Leukemia, Myeloid, Acute](#) [Meningeal Neoplasms](#)  
[Meningioma](#) [Tooth Abnormalities](#)

[服務條款](#) | [隱私權政策](#) | [著作及商標](#) | [網站地圖](#)

©2016 亞諾法生技股份有限公司 Abnova Corporation. 版權所有.