



SZABO SCANDIC

Part of Europa Biosite

Produktinformation



Forschungsprodukte & Biochemikalien



Zellkultur & Verbrauchsmaterial



Diagnostik & molekulare Diagnostik



Laborgeräte & Service

Weitere Information auf den folgenden Seiten!
See the following pages for more information!



Lieferung & Zahlungsart

siehe unsere [Liefer- und Versandbedingungen](#)

Zuschläge

- Mindermengenzuschlag
- Trockeneiszuschlag
- Gefahrgutzuschlag
- Expressversand

SZABO-SCANDIC HandelsgmbH

Quellenstraße 110, A-1100 Wien

T. +43(0)1 489 3961-0

F. +43(0)1 489 3961-7

mail@szabo-scandic.com

www.szabo-scandic.com

[linkedin.com/company/szaboscandic](https://www.linkedin.com/company/szaboscandic) 

STAT5B purified MaxPab rabbit polyclonal antibody (D01P) MaxPab®

Catalog # : H00006777-D01P

規格 : [100 ug]

[List All](#)

Specification

Product Description: Rabbit polyclonal antibody raised against a full-length human STAT5B protein.

Immunogen: STAT5B (AAH20868.1, 1 a.a. ~ 390 a.a) full-length human protein.

Sequence:
 MAVWIAQQLQGEALHQMQUALYGQHFPIEVRHYLSQWIESQAWDSVDL
 DNPQENIKATQLLEGLVQELQKKAHQVGEDGFLLKIKLGHYATQLQNTY
 DRCPMELVRCIRHILYNEQRLVREANNSSPAGSLADAMSQKHLQINQTF
 EELRLVTQDTENELKQLQQTQEYFIIQYQESLRIQAQFGPLAQLSPQERL
 SRETALQKQVSLEAWLQREAQTLQQYRVELAEKHQKTLQLLRKQQTII
 LDDELIQWKRRQQLAGNGGPPPEGSLDVLQSWCEKLAEIWQNRQQIRRA
 EHLCCQLPIPGPVEEMLAEVNATITDIISALVSTFIIKQPPQVLKTQTKFA
 ATVPLLGGKLVNHNPPQVKATIISEQQAKSLLKNENTRK

Host: Rabbit

Reactivity: Human

Quality Control Testing: Antibody reactive against mammalian transfected lysate.

Storage Buffer: In 1x PBS, pH 7.4

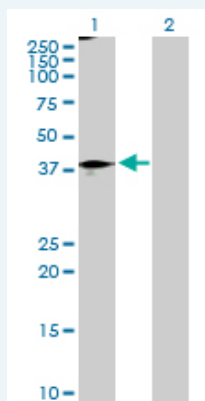
Storage Instruction: Store at -20°C or lower. Aliquot to avoid repeated freezing and thawing.

MSDS: [Download](#)

Datasheet: [Download](#)

Applications

Western Blot (Transfected lysate)



Western Blot analysis of STAT5B expression in transfected 293T cell line ([H00006777-T02](#)) by STAT5B MaxPab polyclonal antibody.

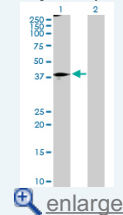
Lane 1: STAT5B transfected lysate(44.90 KDa).

Lane 2: Non-transfected lysate.

[Protocol Download](#)

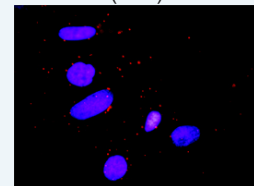
Application Image

Western Blot (Transfected lysate)



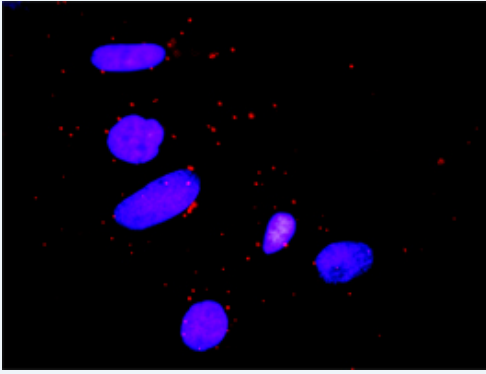
[enlarge](#)

In situ Proximity Ligation Assay (Cell)



[enlarge](#)

In situ Proximity Ligation Assay (Cell)



Proximity Ligation Analysis of protein-protein interactions between STAT5B and CTLA4. HeLa cells were stained with anti-STAT5B rabbit purified polyclonal 1:1200 and anti-CTLA4 mouse monoclonal antibody 1:50. Each red dot represents the detection of protein-protein interaction complex, and nuclei were counterstained with DAPI (blue).

Gene Information

Entrez GeneID: [6777](#)

GeneBank Accession#: [BC020868.1](#)

Protein Accession#: [AAH20868.1](#)

Gene Name: STAT5B

Gene Alias: STAT5

Gene Description: signal transducer and activator of transcription 5B

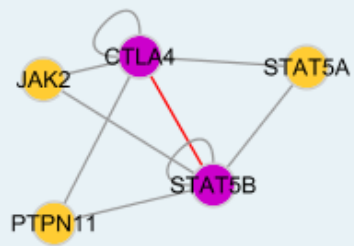
Omim ID: [245590](#), [604260](#)

Gene Ontology: [Hyperlink](#)

Gene Summary: The protein encoded by this gene is a member of the STAT family of transcription factors. In response to cytokines and growth factors, STAT family members are phosphorylated by the receptor associated kinases, and then form homo- or heterodimers that translocate to the cell nucleus where they act as transcription activators. This protein mediates the signal transduction triggered by various cell ligands, such as IL2, IL4, CSF1, and different growth hormones. It has been shown to be involved in diverse biological processes, such as TCR signaling, apoptosis, adult mammary gland development, and sexual dimorphism of liver gene expression. This gene was found to fuse to retinoic acid receptor-alpha (RARA) gene in a small subset of acute promyelocytic leukemias (APLL). The dysregulation of the signaling pathways mediated by this protein may be the cause of the APLL. [provided by RefSeq]

Other Designations: transcription factor STAT5B

Interactome



Gene Pathway

[Acute myeloid leukemia](#) [Chemokine signaling pathway](#) [Chronic myeloid leukemia](#)
[ErbB signaling pathway](#) [Jak-STAT signaling pathway](#) [Pathways in cancer](#)

Related Disease

[Birth Weight](#) [Breast cancer](#) [Breast Neoplasms](#) [Cardiovascular Diseases](#) [Cleft Lip](#)
[Cleft Palate](#) [Diabetes Mellitus, Type 2](#) [Edema](#) [Genetic Predisposition to Disease](#)
[Glioblastoma](#) [Glioma](#) [Leukemia](#) [Leukemia, Myeloid, Acute](#) [Meningeal Neoplasms](#)
[Meningioma](#) [Tooth Abnormalities](#)

[服務條款](#) | [隱私權政策](#) | [著作及商標](#) | [網站地圖](#)

©2016 亞諾法生技股份有限公司 Abnova Corporation. 版權所有.