



# SZABO SCANDIC

Part of Europa Biosite

## Produktinformation



Forschungsprodukte & Biochemikalien



Zellkultur & Verbrauchsmaterial



Diagnostik & molekulare Diagnostik



Laborgeräte & Service

Weitere Information auf den folgenden Seiten!  
See the following pages for more information!



### Lieferung & Zahlungsart

siehe unsere [Liefer- und Versandbedingungen](#)

### Zuschläge

- Mindermengenzuschlag
- Trockeneiszuschlag
- Gefahrgutzuschlag
- Expressversand

### SZABO-SCANDIC HandelsgmbH

Quellenstraße 110, A-1100 Wien

T. +43(0)1 489 3961-0

F. +43(0)1 489 3961-7

[mail@szabo-scandic.com](mailto:mail@szabo-scandic.com)

[www.szabo-scandic.com](http://www.szabo-scandic.com)

[linkedin.com/company/szaboscandic](https://www.linkedin.com/company/szaboscandic) 

## STAT5B monoclonal antibody (M01), clone 1A1

Catalog # : H00006777-M01

規格 : [ 100 ug ]

[List All](#)

### Specification

**Product Description:** Mouse monoclonal antibody raised against a full length recombinant STAT5B.

**Immunogen:** STAT5B (AAH20868, 1 a.a. ~ 390 a.a) full-length recombinant protein with GST tag. MW of the GST tag alone is 26 KDa.

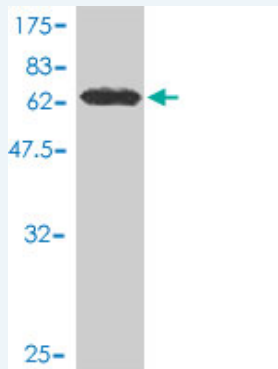
**Sequence:** MAVWIQAQQLQGEALHQMQUALYGQHFPIEVRHYLSQWIESQAWDSVDL  
DNPQENIKATQLLEGLVQELQKKAHQVGEDGFLLKIKLGHYATQLQNTY  
DRCPMELVRCIRHILYNEQRLVREANNGSSPAGSLADAMSQKHLQINQTF  
EELRLVTQDTENELKKLQQTQEYFIIQYQESLRIQAQFGPLAQLSPQERL  
SRETALQQKQVSLEAWLQREAQTLQQYRVELAEKHQKTLQLLRKQQTII  
LDDELIQWKRRQQLAGNGGPPPEGLDVLQSWCEKLAEIWQNRQQIRRA  
EHLCCQLPIPGPVEEMLAEVNATITDIISALVTSFIIIEKQPPQVLKTQTKFA  
ATVRLLVGGKLNVMNPPQVKATIISEQQAKSLLKNENTRK

**Host:** Mouse

**Reactivity:** Human

**Isotype:** IgG1 kappa

**Quality Control Testing:** Antibody Reactive Against Recombinant Protein.



Western Blot detection against Immunogen (68.42 KDa) .

**Storage Buffer:** In 1x PBS, pH 7.4

**Storage Instruction:** Store at -20°C or lower. Aliquot to avoid repeated freezing and thawing.

**MSDS:** [Download](#)

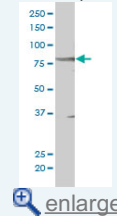
**Datasheet:** [Download](#)

### Applications

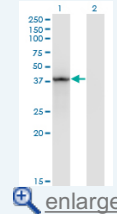
Western Blot (Cell lysate)

### Application Image

Western Blot (Cell lysate)

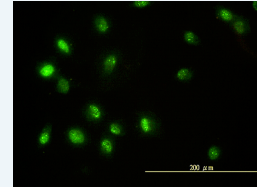


Western Blot (Transfected lysate)

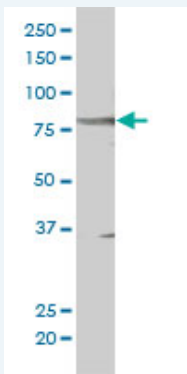


Western Blot (Recombinant protein)

Immunofluorescence



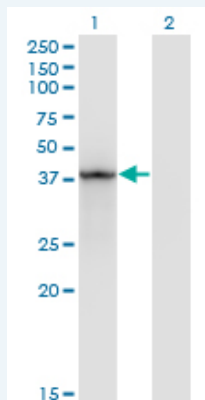
ELISA



STAT5B monoclonal antibody (M01), clone 1A1 Western Blot analysis of STAT5B expression in HeLa S3 NE ( Cat # L013V3 ).

[Protocol Download](#)

#### Western Blot (Transfected lysate)



Western Blot analysis of STAT5B expression in transfected 293T cell line by STAT5B monoclonal antibody (M01), clone 1A1.

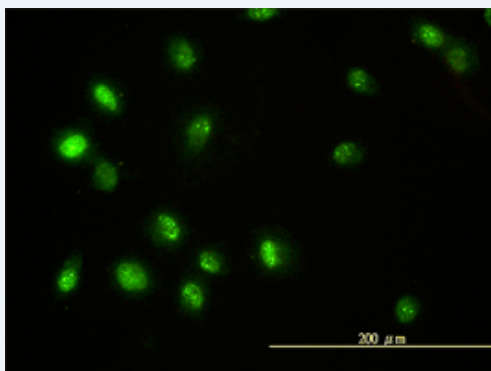
Lane 1: STAT5B transfected lysate(44.9 KDa).  
Lane 2: Non-transfected lysate.

[Protocol Download](#)

#### Western Blot (Recombinant protein)

[Protocol Download](#)

#### Immunofluorescence



[enlarge this image](#)

Immunofluorescence of monoclonal antibody to STAT5B on HeLa cell. [antibody concentration 10 ug/ml]

[Protocol Download](#)

#### ELISA

#### Gene Information

Entrez GeneID: [6777](#)

GeneBank [BC020868](#)

Accession#:

**Protein** [AAH20868](#)

**Accession#:**

**Gene Name:** STAT5B

**Gene Alias:** STAT5

**Gene Description:** signal transducer and activator of transcription 5B

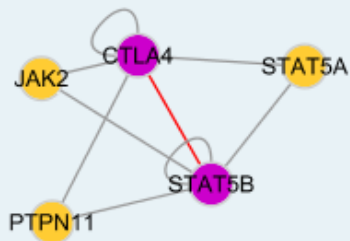
**Omim ID:** [245590](#), [604260](#)

**Gene Ontology:** [Hyperlink](#)

**Gene Summary:** The protein encoded by this gene is a member of the STAT family of transcription factors. In response to cytokines and growth factors, STAT family members are phosphorylated by the receptor associated kinases, and then form homo- or heterodimers that translocate to the cell nucleus where they act as transcription activators. This protein mediates the signal transduction triggered by various cell ligands, such as IL2, IL4, CSF 1, and different growth hormones. It has been shown to be involved in diverse biological processes, such as TCR signaling, apoptosis, adult mammary gland development, and sexual dimorphism of liver gene expression. This gene was found to fuse to retinoic acid receptor-alpha (RARA) gene in a small subset of acute promyelocytic leukemias (APLL). The dysregulation of the signaling pathways mediated by this protein may be the cause of the APLL. [provided by RefSeq]

**Other Designations:** transcription factor STAT5B

### Interactome



### Gene Pathway

[Acute myeloid leukemia](#) [Chemokine signaling pathway](#) [Chronic myeloid leukemia](#) [ErbB signaling pathway](#) [Jak-STAT signaling pathway](#) [Pathways in cancer](#)

### Related Disease

[Birth Weight](#) [Breast cancer](#) [Breast Neoplasms](#) [Cardiovascular Diseases](#) [Cleft Lip](#) [Cleft Palate](#) [Diabetes Mellitus, Type 2](#) [Edema](#) [Genetic Predisposition to Disease](#) [Glioblastoma](#) [Glioma](#) [Leukemia, Myeloid, Acute](#) [Meningeal Neoplasms](#) [Meningioma](#) [Tooth Abnormalities](#)

---

[服務條款](#) | [隱私權政策](#) | [著作及商標](#) | [網站地圖](#)

©2016 亞諾法生技股份有限公司 Abnova Corporation. 版權所有.