



SZABO SCANDIC

Part of Europa Biosite

Produktinformation



Forschungsprodukte & Biochemikalien



Zellkultur & Verbrauchsmaterial



Diagnostik & molekulare Diagnostik



Laborgeräte & Service

Weitere Information auf den folgenden Seiten!
See the following pages for more information!



Lieferung & Zahlungsart

siehe unsere [Liefer- und Versandbedingungen](#)

Zuschläge

- Mindermengenzuschlag
- Trockeneiszuschlag
- Gefahrgutzuschlag
- Expressversand

SZABO-SCANDIC HandelsgmbH

Quellenstraße 110, A-1100 Wien

T. +43(0)1 489 3961-0

F. +43(0)1 489 3961-7

mail@szabo-scandic.com

www.szabo-scandic.com

[linkedin.com/company/szaboscandic](https://www.linkedin.com/company/szaboscandic) 

STAT5B monoclonal antibody (M05), clone 1F5

Catalog # : H00006777-M05

規格 : [100 ug]

[List All](#)

Specification

Product Description: Mouse monoclonal antibody raised against a full length recombinant STAT5B.

Immunogen: STAT5B (AAH20868, 1 a.a. ~ 390 a.a) full-length recombinant protein with GST tag. MW of the GST tag alone is 26 KDa.

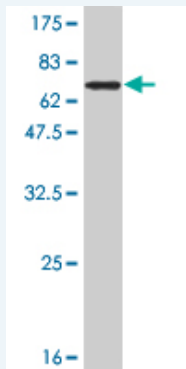
Sequence: MAVWIQAQQLQGEALHQMQUALYGQHFPIEVRHYLSQWIESQAWDSVDL
DNPQENIKATQLLEGLVQELQKKAHQVGEDGFLLKIKLGHYATQLQNTY
DRCPMELVRCIRHILYNEQRLVREANNGSSPAGSLADAMSQKHLQINQTF
EELRLVTQDTENELKKLQQTQEYFIQYQESLRIQAQFGPLAQLSPQERL
SRETALQQKQVSLEAWLQREAQTLQQYRVELAEKHQKTLQLLRKQQTII
LDDELQWKRQRQLAGNGGPPPEGLDVLQSWCEKLAEIWQNRQQIRRA
EHLCCQLPIPGPVEEMLAEVNATITDIISALVTSTFIIKQPPQVLKTQTKFA
ATVRLLVGGKLNVMNPPQVKATIISEQQAKSLLKNENTRK

Host: Mouse

Reactivity: Human

Isotype: IgG1 Kappa

Quality Control Testing: Antibody Reactive Against Recombinant Protein.



Western Blot detection against Immunogen (68.42 KDa) .

Storage Buffer: In 1x PBS, pH 7.4

Storage Instruction: Store at -20°C or lower. Aliquot to avoid repeated freezing and thawing.

MSDS: [Download](#)

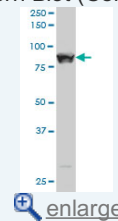
Datasheet: [Download](#)

Applications

Western Blot (Cell lysate)

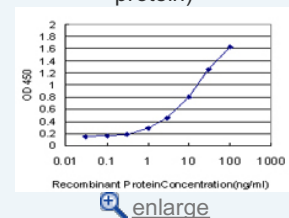
Application Image

Western Blot (Cell lysate)

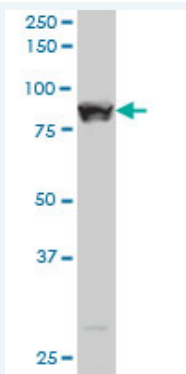


Western Blot (Recombinant protein)

Sandwich ELISA (Recombinant protein)



ELISA



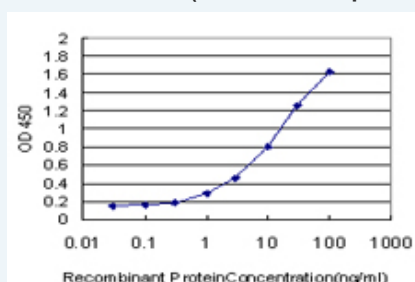
STAT5B monoclonal antibody (M05), clone 1F5 Western Blot analysis of STAT5B expression in K-562 (Cat # L009V1).

[Protocol Download](#)

Western Blot (Recombinant protein)

[Protocol Download](#)

Sandwich ELISA (Recombinant protein)



Detection limit for recombinant GST tagged STAT5B is approximately 0.3ng/ml as a capture antibody.

[Protocol Download](#)

ELISA

Gene Information

Entrez GeneID: [6777](#)

GeneBank [BC020868](#)

Accession#:

Protein [AAH20868](#)

Accession#:

Gene Name: STAT5B

Gene Alias: STAT5

Gene Description: signal transducer and activator of transcription 5B

Omim ID: [245590](#), [604260](#)

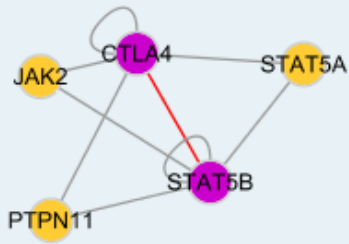
Gene Ontology: [Hyperlink](#)

Gene Summary: The protein encoded by this gene is a member of the STAT family of transcription factors. In response to cytokines and growth factors, STAT family members are phosphorylated by the receptor associated kinases, and then form homo- or heterodimers that translocate to the cell nucleus where they act as transcription activators. This protein mediates the signal transduction triggered by various cell ligands, such as IL2, IL4, CSF1, and different growth hormones. It has been shown to be involved in diverse biological processes, such as TCR signaling, apoptosis, adult mammary gland development, and sexual dimorphism

of liver gene expression. This gene was found to fuse to retinoic acid receptor-alpha (RARA) gene in a small subset of acute promyelocytic leukemias (APLL). The dysregulation of the signaling pathways mediated by this protein may be the cause of the APLL. [provided by RefSeq]

Other Designations: transcription factor STAT5B

Interactome



Gene Pathway

[Acute myeloid leukemia](#) [Chemokine signaling pathway](#) [Chronic myeloid leukemia](#) [ErbB signaling pathway](#) [Jak-STAT signaling pathway](#) [Pathways in cancer](#)

Related Disease

[Birth Weight](#) [Breast cancer](#) [Breast Neoplasms](#) [Cardiovascular Diseases](#) [Cleft Lip](#) [Cleft Palate](#) [Diabetes Mellitus, Type 2](#) [Edema](#) [Genetic Predisposition to Disease](#) [Glioblastoma](#) [Glioma](#) [Leukemia](#) [Leukemia, Myeloid, Acute](#) [Meningeal Neoplasms](#) [Meningioma](#) [Tooth Abnormalities](#)

[服務條款](#) | [隱私權政策](#) | [著作及商標](#) | [網站地圖](#)

©2016 亞諾法生技股份有限公司 Abnova Corporation. 版權所有.