



# SZABO SCANDIC

Part of Europa Biosite

## Produktinformation



Forschungsprodukte & Biochemikalien



Zellkultur & Verbrauchsmaterial



Diagnostik & molekulare Diagnostik



Laborgeräte & Service

Weitere Information auf den folgenden Seiten!  
See the following pages for more information!



### Lieferung & Zahlungsart

siehe unsere [Liefer- und Versandbedingungen](#)

### Zuschläge

- Mindermengenzuschlag
- Trockeneiszuschlag
- Gefahrgutzuschlag
- Expressversand

### SZABO-SCANDIC HandelsgmbH

Quellenstraße 110, A-1100 Wien

T. +43(0)1 489 3961-0

F. +43(0)1 489 3961-7

[mail@szabo-scandic.com](mailto:mail@szabo-scandic.com)

[www.szabo-scandic.com](http://www.szabo-scandic.com)

[linkedin.com/company/szaboscandic](https://www.linkedin.com/company/szaboscandic) 

## STAT6 monoclonal antibody (M09), clone 4G7

Catalog # : H00006778-M09

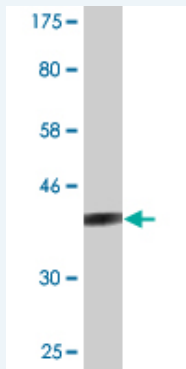
規格 : [ 100 ug ]

[List All](#)

### Specification

<b>Product Description:</b>	Mouse monoclonal antibody raised against a partial recombinant STAT6.
<b>Immunogen:</b>	STAT6 (NP_003144, 694 a.a. ~ 801 a.a) partial recombinant protein with GST tag. MW of the GST tag alone is 26 KDa.
<b>Sequence:</b>	PPSHSIPPYQGLSPEESVNVLSAFQEPHLQMPPSLGQMSLPFDQPHPQ GLLPCQPQEHAVSSPDPLLCSVDMVEDSCLSQPVTAFPQGTWIGEDIF PLLPPTEQD
<b>Host:</b>	Mouse
<b>Reactivity:</b>	Human
<b>Isotype:</b>	IgG2a Kappa

**Quality Control Testing:** Antibody Reactive Against Recombinant Protein.



Western Blot detection against Immunogen (37.51 KDa) .

**Storage Buffer:** In 1x PBS, pH 7.4

**Storage Instruction:** Store at -20°C or lower. Aliquot to avoid repeated freezing and thawing.

**MSDS:** [Download](#)

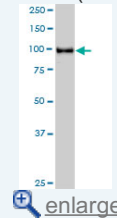
**Datasheet:** [Download](#)

### Applications

Western Blot (Cell lysate)

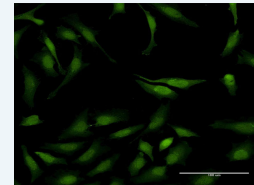
### Application Image

Western Blot (Cell lysate)

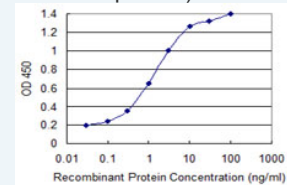


Western Blot (Recombinant protein)

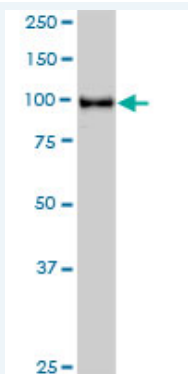
Immunofluorescence



Sandwich ELISA (Recombinant protein)



ELISA



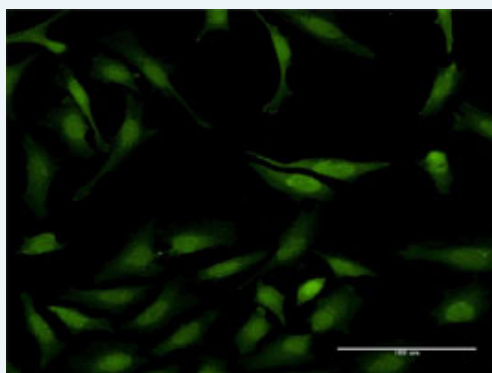
STAT6 monoclonal antibody (M09), clone 4G7. Western Blot analysis of STAT6 expression in HeLa S3 NE(Cat # L013V3 ).

[Protocol Download](#)

#### Western Blot (Recombinant protein)

[Protocol Download](#)

#### Immunofluorescence

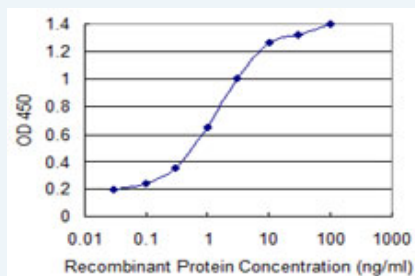


[enlarge this image](#)

Immunofluorescence of monoclonal antibody to STAT6 on HeLa cell . [antibody concentration 10 ug/ml]

[Protocol Download](#)

#### Sandwich ELISA (Recombinant protein)



Detection limit for recombinant GST tagged STAT6 is 0.03 ng/ml as a capture antibody.

[Protocol Download](#)

#### ELISA

#### Gene Information

Entrez GeneID: [6778](#)

GeneBank [BC004973](#)

Accession#:

Protein [NP\\_003144](#)

Accession#:

Gene Name: STAT6

Gene Alias: D12S1644,IL-4-STAT,STAT6B,STAT6C

**Gene Description:** signal transducer and activator of transcription 6, interleukin-4 induced

**Omim ID:** [601512](#)

**Gene Ontology:** [Hyperlink](#)

**Gene Summary:** The protein encoded by this gene is a member of the STAT family of transcription factors. In response to cytokines and growth factors, STAT family members are phosphorylated by the receptor associated kinases, and then form homo- or heterodimers that translocate to the cell nucleus where they act as transcription activators. This protein plays a central role in exerting IL4 mediated biological responses. It is found to induce the expression of BCL2L1/BCL-X(L), which is responsible for the anti-apoptotic activity of IL4. Knockout studies in mice suggested the roles of this gene in differentiation of T helper 2 (Th2) cells, expression of cell surface markers, and class switch of immunoglobulins. [provided by RefSeq]

**Other Designations:** STAT, interleukin4-induced,signal transducer and activator of transcription 6,transcription factor IL-4 STAT

#### Gene Pathway

[Jak-STAT signaling pathway](#)

#### Related Disease

[Anaphylaxis](#) [Arthritis](#) [Rheumatoid](#) [Ascariasis](#) [Asthma](#) [Asthma](#) [Birth Weight](#) [Breast cancer](#) [Breast Neoplasms](#) [Bronchial Hyperreactivity](#) [Bronchiolitis](#) [Viral](#) [Cardiovascular Diseases](#) [Colitis](#) [Ulcerative](#) [Confusion](#) [Crohn Disease](#) [Crohn's disease](#) [Dermatitis](#) [Atopic](#) [Diabetes Mellitus](#) [Type 2](#) [Disease Progression](#) [Drug Hypersensitivity](#)

... see more