



SZABO SCANDIC

Part of Europa Biosite

Produktinformation



Forschungsprodukte & Biochemikalien



Zellkultur & Verbrauchsmaterial



Diagnostik & molekulare Diagnostik



Laborgeräte & Service

Weitere Information auf den folgenden Seiten!
See the following pages for more information!



Lieferung & Zahlungsart

siehe unsere [Liefer- und Versandbedingungen](#)

Zuschläge

- Mindermengenzuschlag
- Trockeneiszuschlag
- Gefahrgutzuschlag
- Expressversand

SZABO-SCANDIC HandelsgmbH

Quellenstraße 110, A-1100 Wien

T. +43(0)1 489 3961-0

F. +43(0)1 489 3961-7

mail@szabo-scandic.com

www.szabo-scandic.com

[linkedin.com/company/szaboscandic](https://www.linkedin.com/company/szaboscandic) 

STAU1 purified MaxPab rabbit polyclonal antibody (D01P) MaxPab®

Catalog # : H00006780-D01P

規格 : [100 ug]

[List All](#)

Specification

Product Description: Rabbit polyclonal antibody raised against a full-length human STAU1 protein.

Immunogen: STAU1 (NP_059347.2, 1 a.a. ~ 577 a.a) full-length human protein.

Sequence:
 MSQVQVQVQNPSAALSGSQILNKNQSLLSQPLMSIPSTTSSLPSENAGR
 PIQNSALPSASITSTAAAESITPTVELNALCMKLGKKPMYKVPVDPYSRMQ
 STYNYNMRGGAYPPRYFYFPVPPLLYQVELSVGGQQFNGKGGKTRQAA
 KHDAAAKALRILQNEPLPERLEVNGRESEENLNKSEISQVFEIALKRNLPV
 NFEVARESGPPHMKNFVTKVSVGEFVGEGEGKSKKISKNAIAVLEELK
 KLPPLPAVERVKPRIKKTKPMKPTSPYEGQGINPISRLAQIQQAKKEKE
 PEYTLTTERGLPRRREFVMQVKVGNHTAEGTGTNKKVAKRNAENMLEI
 LGFKVPQAQPTKPALKSEEKTPIKKPGDGRKVTFFEPGSGDENGTSNKE
 DEFRMPYLSHQQLPAGILPMVPEVAQAVGVSQGHHTKDFTRAAPNPAKA
 TVTAMIARELLYGGTSPTAETILKNNISGHVPHGPLTRPSEQLDYLSRVQ
 GFQVEYKDFPKNNKNEFVSLINCSSQPPLISHGIGKDVESCHDMAALNILK
 LLSELDQQSTEMPRTGNGPMSVCGRC

Host: Rabbit

Reactivity: Human

Quality Control Testing: Antibody reactive against mammalian transfected lysate.

Storage Buffer: In 1x PBS, pH 7.4

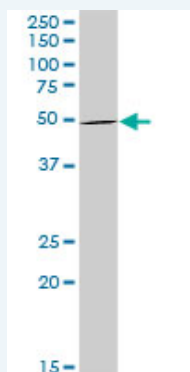
Storage Instruction: Store at -20°C or lower. Aliquot to avoid repeated freezing and thawing.

MSDS:  [Download](#)

Datasheet:  [Download](#)

Applications

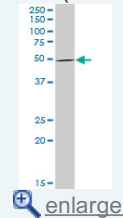
Western Blot (Tissue lysate)



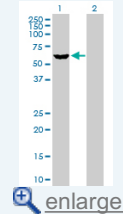
STAU1 MaxPab rabbit polyclonal antibody. Western Blot analysis of STAU1 expression in human liver.

Application Image

Western Blot (Tissue lysate)

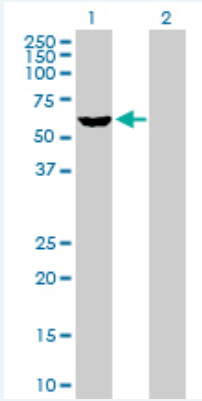


Western Blot (Transfected lysate)



 [Protocol Download](#)

Western Blot (Transfected lysate)



Western Blot analysis of STAU1 expression in transfected 293T cell line ([H00006780-T02](#)) by STAU1 MaxPab polyclonal antibody.

Lane 1: STAU1 transfected lysate(63.20 KDa).

Lane 2: Non-transfected lysate.

 [Protocol Download](#)

Gene Information

Entrez GeneID: [6780](#)

GeneBank [NM_017453.2](#)

Accession#:

Protein [NP_059347.2](#)

Accession#:

Gene Name: STAU1

Gene Alias: FLJ25010,STAU

Gene staufen, RNA binding protein, homolog 1 (Drosophila)

Description:

Omim ID: [601716](#)

Gene Ontology: [Hyperlink](#)

Gene Summary: Staufen is a member of the family of double-stranded RNA (dsRNA)-binding proteins involved in the transport and/or localization of mRNAs to different subcellular compartments and/or organelles. These proteins are characterized by the presence of multiple dsRNA-binding domains which are required to bind RNAs having double-stranded secondary structures. The human homologue of staufen encoded by STAU, in addition contains a microtubule-binding domain similar to that of microtubule-associated protein 1B, and binds tubulin. The STAU gene product has been shown to be present in the cytoplasm in association with the rough endoplasmic reticulum (RER), implicating this protein in the transport of mRNA via the microtubule network to the RER, the site of translation. Five transcript variants resulting from alternative splicing of STAU gene and encoding three isoforms have been described. Three of these variants encode the same isoform, however, differ in their 5'UTR. [provided by RefSeq]

Other Designations: OTTHUMP00000031233,OTTHUMP00000031234,OTTHUMP00000031235,OTTHUMP00000031236,OTTHUMP00000031238,staufen