



# SZABO SCANDIC

Part of Europa Biosite

## Produktinformation



Forschungsprodukte & Biochemikalien



Zellkultur & Verbrauchsmaterial



Diagnostik & molekulare Diagnostik



Laborgeräte & Service

Weitere Information auf den folgenden Seiten!  
See the following pages for more information!



### Lieferung & Zahlungsart

siehe unsere [Liefer- und Versandbedingungen](#)

### Zuschläge

- Mindermengenzuschlag
- Trockeneiszuschlag
- Gefahrgutzuschlag
- Expressversand

### SZABO-SCANDIC HandelsgmbH

Quellenstraße 110, A-1100 Wien

T. +43(0)1 489 3961-0

F. +43(0)1 489 3961-7

[mail@szabo-scandic.com](mailto:mail@szabo-scandic.com)

[www.szabo-scandic.com](http://www.szabo-scandic.com)

[linkedin.com/company/szaboscandic](https://www.linkedin.com/company/szaboscandic) 

## STAU1 293T Cell Transient Overexpression Lysate(Denatured)

Catalog # : H00006780-T01

規格 : [ 100 uL ]

List All

### Specification

**Transfected Cell Line:** 293T

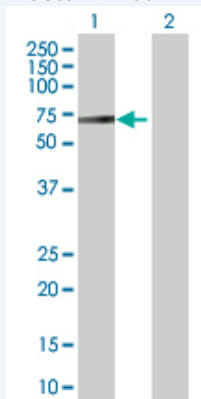
**Plasmid:** pCMV-STAU1 full-length

**Host:** Human

**Theoretical MW (kDa):** 63.58

**Quality Control Testing:** Transient overexpression cell lysate was tested with Anti-STAU1 antibody ([H00006780-B01](#)) by Western Blots.

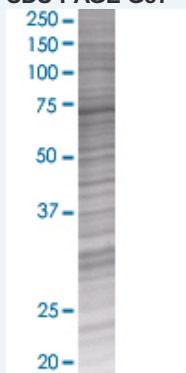
#### Western Blot



Lane 1: STAU1 transfected lysate ( 63.2 KDa)

Lane 2: Non-transfected lysate.

#### SDS-PAGE Gel



STAU1 transfected lysate.

**Storage Buffer:** 1X Sample Buffer (50 mM Tris-HCl, 2% SDS, 10% glycerol, 300 mM 2-mercaptoethanol, 0.01% Bromophenol blue)

**Storage Instruction:** Store at -80°C. Aliquot to avoid repeated freezing and thawing.

**MSDS:**  [Download](#)

### Applications

### Application Image

Western Blot

## Western Blot

### Gene Information

Entrez GeneID: [6780](#)

GeneBank Accession#: [NM\\_017453.2](#)

Protein Accession#: =

Gene Name: STAU1

Gene Alias: FLJ25010,STAU

Gene Description: staufen, RNA binding protein, homolog 1 (Drosophila)

Omim ID: [601716](#)

Gene Ontology: [Hyperlink](#)

**Gene Summary:** Staufen is a member of the family of double-stranded RNA (dsRNA)-binding proteins involved in the transport and/or localization of mRNAs to different subcellular compartments and/or organelles. These proteins are characterized by the presence of multiple dsRNA-binding domains which are required to bind RNAs having double-stranded secondary structures. The human homologue of staufen encoded by STAU, in addition contains a microtubule-binding domain similar to that of microtubule-associated protein 1B, and binds tubulin. The STAU gene product has been shown to be present in the cytoplasm in association with the rough endoplasmic reticulum (RER), implicating this protein in the transport of mRNA via the microtubule network to the RER, the site of translation. Five transcript variants resulting from alternative splicing of STAU gene and encoding three isoforms have been described. Three of these variants encode the same isoform, however, differ in their 5'UTR. [provided by RefSeq]

Other Designations: OTTHUMP00000031233,OTTHUMP00000031234,OTTHUMP00000031235,OTTHUMP00000031236,OTTHUMP00000031238,staufen