



SZABO SCANDIC

Part of Europa Biosite

Produktinformation



Forschungsprodukte & Biochemikalien



Zellkultur & Verbrauchsmaterial



Diagnostik & molekulare Diagnostik



Laborgeräte & Service

Weitere Information auf den folgenden Seiten!
See the following pages for more information!



Lieferung & Zahlungsart

siehe unsere [Liefer- und Versandbedingungen](#)

Zuschläge

- Mindermengenzuschlag
- Trockeneiszuschlag
- Gefahrgutzuschlag
- Expressversand

SZABO-SCANDIC HandelsgmbH

Quellenstraße 110, A-1100 Wien

T. +43(0)1 489 3961-0

F. +43(0)1 489 3961-7

mail@szabo-scandic.com

www.szabo-scandic.com

[linkedin.com/company/szaboscandic](https://www.linkedin.com/company/szaboscandic) 

SULT1E1 MaxPab mouse polyclonal antibody (B01) MaxPab®

Catalog # : H00006783-B01

規格 : [50 uL]

[List All](#)

Specification

Product Description: Mouse polyclonal antibody raised against a full-length human SULT1E1 protein.

Immunogen: SULT1E1 (AAH27956, 1 a.a. ~ 294 a.a) full-length human protein.

Sequence:
 MNSELDYYEKFEVHGLMYKDFVKYWDNVEAFQARPDDLVIATYPKSG
 TTWVSEIVMIYKEGDVEKCKEDVIFNRIPFLECRKENLMNGVKQLDEM
 SPRIVKTHLPPELLPASFWEKDCKIYLCRNAKDVAVSFYFFLMVAGHPN
 PGSLEPFVEKFMQQQVPYGSWYKHVKSWWKEGKSPRVLFLFYEDLKE
 DIRKEVIKLIHFLEKRPSEELVDRIIHHTSFQEMKNNPSTNYTTLPDEIMNQK
 LSPFMRKGITGDWKNHFTVALNEKFDKHYEQQMKESTLKFRTI

Host: Mouse

Reactivity: Human

Quality Control Testing: Antibody reactive against mammalian transfected lysate.

Storage Buffer: No additive

Storage Instruction: Store at -20°C or lower. Aliquot to avoid repeated freezing and thawing.

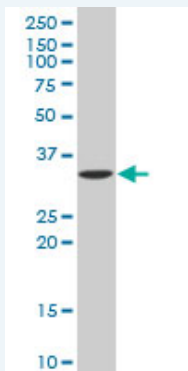
Note: For IHC and IF applications, antibody purification with Protein A will be needed prior to use.

MSDS:  [Download](#)


Datasheet:  [Download](#)

Applications

Western Blot (Tissue lysate)



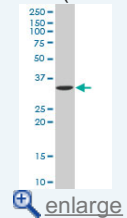
SULT1E1 MaxPab polyclonal antibody. Western Blot analysis of SULT1E1 expression in human liver.

 [Protocol Download](#)

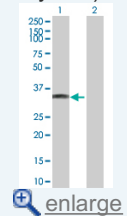
Western Blot (Transfected lysate)

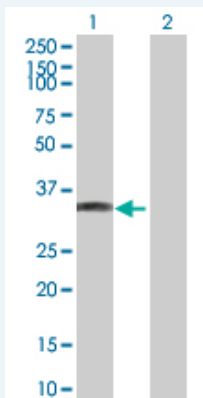
Application Image

Western Blot (Tissue lysate)



Western Blot (Transfected lysate)





Western Blot analysis of SULT1E1 expression in transfected 293T cell line ([H00006783-T01](#)) by SULT1E1 MaxPab polyclonal antibody.

Lane 1: SULT1E1 transfected lysate(32.45 KDa).
Lane 2: Non-transfected lysate.

 [Protocol Download](#)

Gene Information

Entrez GeneID: [6783](#)

GeneBank Accession#: [BC027956](#)

Protein Accession#: [AAH27956](#)

Gene Name: SULT1E1

Gene Alias: EST,EST-1,MGC34459,STE

Gene Description: sulfotransferase family 1E, estrogen-preferring, member 1

Omim ID: [600043](#)

Gene Ontology: [Hyperlink](#)

Gene Summary: Sulfotransferase enzymes catalyze the sulfate conjugation of many hormones, neurotransmitters, drugs, and xenobiotic compounds. These cytosolic enzymes are different in their tissue distributions and substrate specificities. The gene structure (number and length of exons) is similar among family members. This gene encodes a protein that transfers a sulfo moiety to and from estrone, which may control levels of estrogen receptors. [provided by RefSeq]

Other Designations: estrogen sulfotransferase,estrone sulfotransferase,sulfotransferase, estrogen-preferring

Gene Pathway

Androgen and estrogen metabolism [Sulfur metabolism](#)

Related Disease

[Breast cancer](#) [Breast Neoplasms](#) [Carcinoma, Ductal, Breast](#) [Carcinoma, Lobular](#) [Cryptorchidism](#) [Endometrial Neoplasms](#) [Genetic Predisposition to Disease](#) [Hearing Loss](#) [Kidney Failure, Chronic](#) [Neoplasms, Germ Cell and Embryonal](#) [Seminoma](#) [Testicular Neoplasms](#) [Tobacco Use Disorder](#)

