



# SZABO SCANDIC

Part of Europa Biosite

## Produktinformation



Forschungsprodukte & Biochemikalien



Zellkultur & Verbrauchsmaterial



Diagnostik & molekulare Diagnostik



Laborgeräte & Service

Weitere Information auf den folgenden Seiten!  
See the following pages for more information!



### Lieferung & Zahlungsart

siehe unsere [Liefer- und Versandbedingungen](#)

### Zuschläge

- Mindermengenzuschlag
- Trockeneiszuschlag
- Gefahrgutzuschlag
- Expressversand

### SZABO-SCANDIC HandelsgmbH

Quellenstraße 110, A-1100 Wien

T. +43(0)1 489 3961-0

F. +43(0)1 489 3961-7

[mail@szabo-scandic.com](mailto:mail@szabo-scandic.com)

[www.szabo-scandic.com](http://www.szabo-scandic.com)

[linkedin.com/company/szaboscandic](https://www.linkedin.com/company/szaboscandic) 

**SULT1E1 purified MaxPab mouse polyclonal antibody (B02P)** MaxPab®

Catalog # : H00006783-B02P

規格 : [ 50 ug ]

[List All](#)

**Specification**

**Product Description:** Mouse polyclonal antibody raised against a full-length human SULT1E1 protein.

**Immunogen:** SULT1E1 (AAH27956.1, 1 a.a. ~ 294 a.a) full-length human protein.

**Sequence:**  
 MNSELDYYEKFEVHGLMYKDFVKYWDNVEAFQARPDDLVIATYPKSG  
 TTWVSEIVMIYKEGDVEKCKEDVIFNRIPFLECRKENLMNGVKQLDEM  
 SPRIVKTHLPPELLPASFWEKDCKIYLCRNAKDVAVSFYFFLMVAGHPN  
 PGSLEPFVEKFMQGGQVPYGSWYKHVKSWWKEGKSPRVLFLFYEDLKE  
 DIRKEVIKLIHFLEKRPSEELVDRIIHHTSFQEMKNNPSTNYTTLPEIMNQK  
 LSPFMRKGITGDWKNHFTVALNEKFDKHYEQQMKESTLKFRTI

**Host:** Mouse

**Reactivity:** Human

**Quality Control Testing:** Antibody reactive against mammalian transfected lysate.

**Storage Buffer:** In 1x PBS, pH 7.4

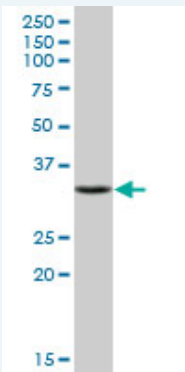
**Storage Instruction:** Store at -20°C or lower. Aliquot to avoid repeated freezing and thawing.

**MSDS:**  [Download](#)

**Datasheet:**  [Download](#)

**Applications**

**Western Blot (Tissue lysate)**



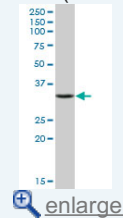
SULT1E1 MaxPab polyclonal antibody. Western Blot analysis of SULT1E1 expression in human liver.

 [Protocol Download](#)

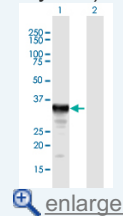
**Western Blot (Transfected lysate)**

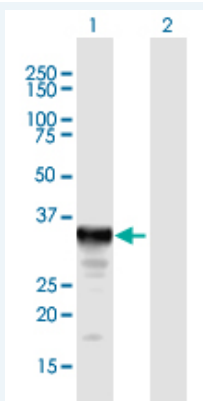
**Application Image**

**Western Blot (Tissue lysate)**




**Western Blot (Transfected lysate)**





Western Blot analysis of SULT1E1 expression in transfected 293T cell line ([H00006783-T02](#)) by SULT1E1 MaxPab polyclonal antibody.

Lane 1: SULT1E1 transfected lysate(32.34 KDa).  
Lane 2: Non-transfected lysate.

 [Protocol Download](#)

## Gene Information

**Entrez GeneID:** [6783](#)

**GeneBank Accession#:** [BC027956.1](#)

**Protein Accession#:** [AAH27956.1](#)

**Gene Name:** SULT1E1

**Gene Alias:** EST,EST-1,MGC34459,STE

**Gene Description:** sulfotransferase family 1E, estrogen-preferring, member 1

**Omim ID:** [600043](#)

**Gene Ontology:** [Hyperlink](#)

**Gene Summary:** Sulfotransferase enzymes catalyze the sulfate conjugation of many hormones, neurotransmitters, drugs, and xenobiotic compounds. These cytosolic enzymes are different in their tissue distributions and substrate specificities. The gene structure (number and length of exons) is similar among family members. This gene encodes a protein that transfers a sulfo moiety to and from estrone, which may control levels of estrogen receptors. [provided by RefSeq]

**Other Designations:** estrogen sulfotransferase,estrone sulfotransferase,sulfotransferase, estrogen-preferring

## Gene Pathway

Androgen and estrogen metabolism [Sulfur metabolism](#)

## Related Disease

[Breast cancer](#) [Breast Neoplasms](#) [Carcinoma, Ductal, Breast](#) [Carcinoma, Lobular](#) [Cryptorchidism](#) [Endometrial Neoplasms](#) [Genetic Predisposition to Disease](#) [Hearing Loss](#) [Kidney Failure, Chronic](#) [Neoplasms, Germ Cell and Embryonal](#) [Seminoma](#) [Testicular Neoplasms](#) [Tobacco Use Disorder](#)

