



SZABO SCANDIC

Part of Europa Biosite

Produktinformation



Forschungsprodukte & Biochemikalien



Zellkultur & Verbrauchsmaterial



Diagnostik & molekulare Diagnostik



Laborgeräte & Service

Weitere Information auf den folgenden Seiten!
See the following pages for more information!



Lieferung & Zahlungsart

siehe unsere [Liefer- und Versandbedingungen](#)

Zuschläge

- Mindermengenzuschlag
- Trockeneiszuschlag
- Gefahrgutzuschlag
- Expressversand

SZABO-SCANDIC HandelsgmbH

Quellenstraße 110, A-1100 Wien

T. +43(0)1 489 3961-0

F. +43(0)1 489 3961-7

mail@szabo-scandic.com

www.szabo-scandic.com

[linkedin.com/company/szaboscandic](https://www.linkedin.com/company/szaboscandic) 

SULT1E1 purified MaxPab rabbit polyclonal antibody (D02P) MaxPab®

Catalog # : H00006783-D02P

規格 : [100 ug]

List All

Specification

Product Description: Rabbit polyclonal antibody raised against a full-length human SULT1E1 protein.

Immunogen: SULT1E1 (AAH27956.1, 1 a.a. ~ 294 a.a) full-length human protein.

Sequence:
 MNSELDYYEKFEVHGILMYKDFVKYWDNVEAFQARPDDLVIATYPKSG
 TTWVSEIVYMIYKEGDVEKCKEDVIFNRIPFLECRKENLMNGVKQLDEM
 SPRIVKTHLPPELLPASFWEKDCKIYLCRNAKDVAVSFYFFLMVAGHPN
 PGSLEPFVEKFMQGQVPYGSWYKHVKSWWWEKGSPLVFLFYEDLKE
 DIRKEVIKLIHFLEKRPSEELVDRIIHHTSFQEMKNNPSTNYTTLPEIMNQK
 LSPFMRKGITGDWKNHFTVALNEKFDKHYEQQMKESTLKFRTET

Host: Rabbit

Reactivity: Human, Mouse

Quality Control Testing: Antibody reactive against mammalian transfected lysate.

Storage Buffer: In 1x PBS, pH 7.4

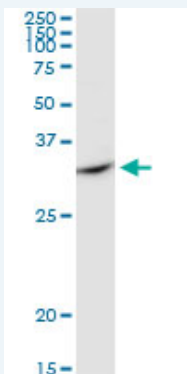
Storage Instruction: Store at -20°C or lower. Aliquot to avoid repeated freezing and thawing.

MSDS:  [Download](#)

Datasheet:  [Download](#)

Applications

Western Blot (Tissue lysate)



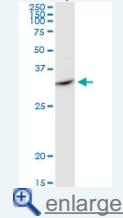
SULT1E1 MaxPab rabbit polyclonal antibody. Western Blot analysis of SULT1E1 expression in human kidney.

 [Protocol Download](#)

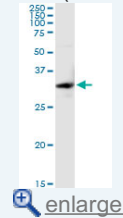
Western Blot (Tissue lysate)

Application Image

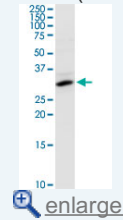
Western Blot (Tissue lysate)



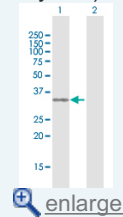
Western Blot (Tissue lysate)

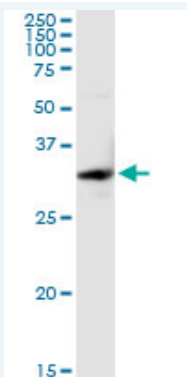


Western Blot (Cell lysate)



Western Blot (Transfected lysate)

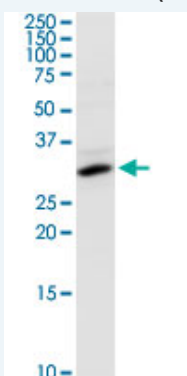





SULT1E1 MaxPab rabbit polyclonal antibody. Western Blot analysis of SULT1E1 expression in mouse brain.

 [Protocol Download](#)

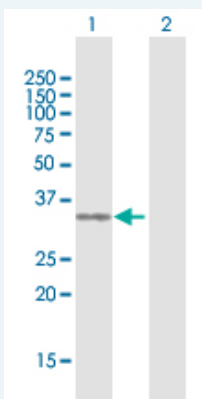
Western Blot (Cell lysate)



SULT1E1 MaxPab rabbit polyclonal antibody. Western Blot analysis of SULT1E1 expression in HeLa.

 [Protocol Download](#)

Western Blot (Transfected lysate)



Western Blot analysis of SULT1E1 expression in transfected 293T cell line (H00006783-T01) by SULT1E1 MaxPab polyclonal antibody.

Lane 1: SULT1E1 transfected lysate(32.45 KDa).

Lane 2: Non-transfected lysate.

 [Protocol Download](#)

Gene Information

Entrez GeneID: [6783](#)

GeneBank [BC027956.1](#)

Accession#:

Protein [AAH27956.1](#)

Accession#:

Gene Name: SULT1E1

Gene Alias: EST,EST-1,MGC34459,STE

Gene Description: sulfotransferase family 1E, estrogen-preferring, member 1

Omim ID: [600043](#)

Gene Ontology: [Hyperlink](#)

Gene Summary: Sulfotransferase enzymes catalyze the sulfate conjugation of many hormones, neurotransmitters, drugs, and xenobiotic compounds. These cytosolic enzymes are different in their tissue distributions and substrate specificities. The gene structure (number and length of exons) is similar among family members. This gene encodes a protein that transfers a sulfo moiety to and from estrone, which may control levels of estrogen receptors. [provided by RefSeq]

Other Designations: estrogen sulfotransferase,estrone sulfotransferase,sulfotransferase, estrogen-preferring

Gene Pathway

[Androgen and estrogen metabolism](#) [Sulfur metabolism](#)

Related Disease

[Breast cancer](#) [Breast Neoplasms](#) [Carcinoma, Ductal, Breast](#) [Carcinoma, Lobular](#) [Cryptorchidism](#) [Endometrial Neoplasms](#) [Genetic Predisposition to Disease](#) [Hearing Loss](#) [Kidney Failure, Chronic](#) [Neoplasms, Germ Cell and Embryonal](#) [Seminoma](#) [Testicular Neoplasms](#) [Tobacco Use Disorder](#)

[服務條款](#) | [隱私權政策](#) | [著作及商標](#) | [網站地圖](#)

©2016 亞諾法生技股份有限公司 Abnova Corporation. 版權所有.