



# SZABO SCANDIC

Part of Europa Biosite

## Produktinformation



Forschungsprodukte & Biochemikalien



Zellkultur & Verbrauchsmaterial



Diagnostik & molekulare Diagnostik



Laborgeräte & Service

Weitere Information auf den folgenden Seiten!  
See the following pages for more information!



### Lieferung & Zahlungsart

siehe unsere [Liefer- und Versandbedingungen](#)

### Zuschläge

- Mindermengenzuschlag
- Trockeneiszuschlag
- Gefahrgutzuschlag
- Expressversand

### SZABO-SCANDIC HandelsgmbH

Quellenstraße 110, A-1100 Wien

T. +43(0)1 489 3961-0

F. +43(0)1 489 3961-7

[mail@szabo-scandic.com](mailto:mail@szabo-scandic.com)

[www.szabo-scandic.com](http://www.szabo-scandic.com)

[linkedin.com/company/szaboscandic](https://www.linkedin.com/company/szaboscandic) 

## SULT1E1 293T Cell Transient Overexpression Lysate(Denatured)

Catalog # : H00006783-T03

規格 : [ 100 uL ]

List All

### Specification

**Transfected Cell Line:** 293T

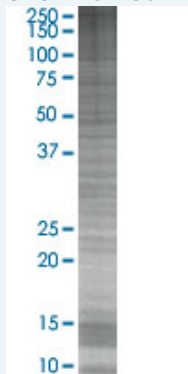
**Plasmid:** pCMV-SULT1E1 full-length

**Host:** Human

**Theoretical MW (kDa):** 35.1

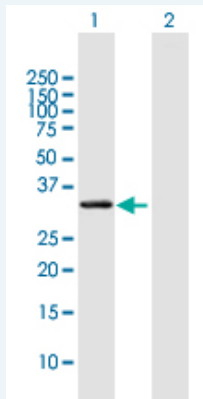
**Quality Control Testing:** Transient overexpression cell lysate was tested with Anti-SULT1E1 antibody (H00006783-D01) by Western Blots.

#### SDS-PAGE Gel



SULT1E1 transfected lysate.

#### Western Blot



Lane 1: SULT1E1 transfected lysate ( 35.1 KDa)

Lane 2: Non-transfected lysate.

**Storage Buffer:** 1X Sample Buffer (50 mM Tris-HCl, 2% SDS, 10% glycerol, 300 mM 2-mercaptoethanol, 0.01% Bromophenol blue)

**Storage Instruction:** Store at -80°C. Aliquot to avoid repeated freezing and thawing.

**MSDS:**  [Download](#)

### Applications

## Western Blot

### Gene Information

Entrez GeneID: [6783](#)

GeneBank [BC027956.1](#)  
Accession#:

Protein [AAH27956.1](#)  
Accession#:

Gene Name: SULT1E1

Gene Alias: EST,EST-1,MGC34459,STE

Gene Description: sulfotransferase family 1E, estrogen-preferring, member 1

Omim ID: [600043](#)

Gene Ontology: [Hyperlink](#)

**Gene Summary:** Sulfotransferase enzymes catalyze the sulfate conjugation of many hormones, neurotransmitters, drugs, and xenobiotic compounds. These cytosolic enzymes are different in their tissue distributions and substrate specificities. The gene structure (number and length of exons) is similar among family members. This gene encodes a protein that transfers a sulfo moiety to and from estrone, which may control levels of estrogen receptors. [provided by RefSeq]

**Other Designations:** estrogen sulfotransferase,estrone sulfotransferase,sulfotransferase, estrogen-preferring

### Gene Pathway

[Androgen and estrogen metabolism](#) [Sulfur metabolism](#)

### Related Disease

[Breast cancer](#) [Breast Neoplasms](#) [Carcinoma, Ductal, Breast](#) [Carcinoma, Lobular](#) [Cryptorchidism](#) [Endometrial Neoplasms](#) [Genetic Predisposition to Disease](#) [Hearing Loss](#) [Kidney Failure, Chronic](#) [Neoplasms, Germ Cell and Embryonal](#) [Seminoma](#) [Testicular Neoplasms](#) [Tobacco Use Disorder](#)

[服務條款](#) | [隱私權政策](#) | [著作及商標](#) | [網站地圖](#)

©2016 亞諾法生技股份有限公司 Abnova Corporation. 版權所有.