



# SZABO SCANDIC

Part of Europa Biosite

## Produktinformation



Forschungsprodukte & Biochemikalien



Zellkultur & Verbrauchsmaterial



Diagnostik & molekulare Diagnostik



Laborgeräte & Service

Weitere Information auf den folgenden Seiten!  
See the following pages for more information!



### Lieferung & Zahlungsart

siehe unsere [Liefer- und Versandbedingungen](#)

### Zuschläge

- Mindermengenzuschlag
- Trockeneiszuschlag
- Gefahrgutzuschlag
- Expressversand

### SZABO-SCANDIC HandelsgmbH

Quellenstraße 110, A-1100 Wien

T. +43(0)1 489 3961-0

F. +43(0)1 489 3961-7

[mail@szabo-scandic.com](mailto:mail@szabo-scandic.com)

[www.szabo-scandic.com](http://www.szabo-scandic.com)

[linkedin.com/company/szaboscandic](https://www.linkedin.com/company/szaboscandic) 

## STIM1 MaxPab mouse polyclonal antibody (B01) MaxPab®

Catalog # : H00006786-B01

規格 : [ 50 uL ]

[List All](#)

### Specification

**Product Description:** Mouse polyclonal antibody raised against a full-length human STIM1 protein.

**Immunogen:** STIM1 (NP\_003147.2, 1 a.a. ~ 685 a.a) full-length human protein.

**Sequence:**  
 MDVCVRLALWLLWGLLLHQGQSLSHSHSEKATGTSSGANSEESTAAEF  
 CRIDKPLCHSEDEKLSFEAVRNIHKLMDDDANGDVDVEESDEFLLREDLNY  
 HDPTVKHSTFHGEDKLISVEDLWKAWKSSEVYNWTVDEVVQWLITYVEL  
 PQYEETFRKLQLSGHAMPRLAVTNTTMTGTVLKMTDRSHRQKLQKAL  
 DTVLFGPPLLTRHNHLKDFMLVVSIMGVGGCWFAYIQNRYSKEHMKMM  
 KDLEGLHRAEQSLHDLQERLHKAQEEHRTVEVEKVHLEKKLRDEINLAKQ  
 EAQRLKELREGTENERSRQKYAEEEELEQVREALRKAKEKELESHSSWYAP  
 EALQKWLQLTHEVEVQYNIKKQNAEKQLLVAKEGAEKIKKKRNTLFGTF  
 HVAHSSSLDDVDHKILTAKQALSEVT AALRERLHRWQQIEILCGFQIVNPNP  
 GIHSLVAALNIDPSWMGSTRPNPAHFIMTDDVDDMDEEIVSPLSMQSPSL  
 QSSVRQRLTEPQHGLGSQRDLTHSDSESSLHMSDRQRVAPKPPQMSR  
 AADEALNAMTNGSHRLIEGVHPGSLVEKLPDSPALAKKALLALNHGLDK  
 AHSLMELSPSAPPGGSPHLDSSRSHSPSPDPDT PSPVGDSRALQASRN  
 TRIPHLAGKKAVAEEDNGSIGEETDSSPGRKKFPLKIFKKPLKK

**Host:** Mouse

**Reactivity:** Human

**Quality Control Testing:** Antibody reactive against mammalian transfected lysate.

**Storage Buffer:** No additive

**Storage Instruction:** Store at -20°C or lower. Aliquot to avoid repeated freezing and thawing.

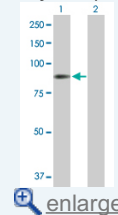
**Note:** For IHC and IF applications, antibody purification with Protein A will be needed prior to use.


**MSDS:**  [Download](#)

**Datasheet:**  [Download](#)

### Application Image

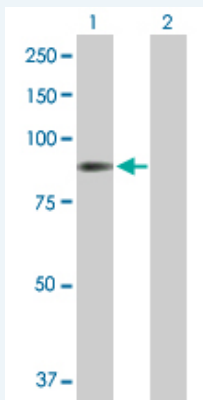
Western Blot (Transfected lysate)



 [enlarge](#)

### Applications

Western Blot (Transfected lysate)



Western Blot analysis of STIM1 expression in transfected 293T cell line ([H00006786-T02](#)) by STIM1 MaxPab polyclonal antibody.

Lane 1: STIM1 transfected lysate(77.40 KDa).

Lane 2: Non-transfected lysate.

 [Protocol Download](#)

## Gene Information

**Entrez GeneID:** [6786](#)

**GeneBank** [NM\\_003156](#)

**Accession#:**

**Protein** [NP\\_003147.2](#)

**Accession#:**

**Gene Name:** STIM1

**Gene Alias:** D11S4896E,GOK

**Gene** stromal interaction molecule 1

**Description:**

**Omim ID:** [605921](#)

**Gene Ontology:** [Hyperlink](#)

**Gene Summary:** This gene encodes a type 1 transmembrane protein that mediates Ca<sup>2+</sup> influx after depletion of intracellular Ca<sup>2+</sup> stores by gating of store-operated Ca<sup>2+</sup> influx channels (SOCs). It is one of several genes located in the imprinted gene domain of 11p15.5, an important tumor-suppressor gene region. Alterations in this region have been associated with the Beckwith-Wiedemann syndrome, Wilms tumor, rhabdomyosarcoma, adrenocortical carcinoma, and lung, ovarian, and breast cancer. This gene may play a role in malignancies and disease that involve this region, as well as early hematopoiesis, by mediating attachment to stromal cells. This gene is oriented in a head-to-tail configuration with the ribonucleotide reductase 1 gene (RRM1), with the 3' end of this gene situated 1.6 kb from the 5' end of the RRM1 gene

**Other** -  
**Designations:**