



# SZABO SCANDIC

Part of Europa Biosite

## Produktinformation



Forschungsprodukte & Biochemikalien



Zellkultur & Verbrauchsmaterial



Diagnostik & molekulare Diagnostik



Laborgeräte & Service

Weitere Information auf den folgenden Seiten!  
See the following pages for more information!



### Lieferung & Zahlungsart

siehe unsere [Liefer- und Versandbedingungen](#)

### Zuschläge

- Mindermengenzuschlag
- Trockeneiszuschlag
- Gefahrgutzuschlag
- Expressversand

### SZABO-SCANDIC HandelsgmbH

Quellenstraße 110, A-1100 Wien

T. +43(0)1 489 3961-0

F. +43(0)1 489 3961-7

[mail@szabo-scandic.com](mailto:mail@szabo-scandic.com)

[www.szabo-scandic.com](http://www.szabo-scandic.com)

[linkedin.com/company/szaboscandic](https://www.linkedin.com/company/szaboscandic) 

## STIM1 monoclonal antibody (M02), clone 6C6

Catalog # : H00006786-M02

規格 : [ 100 ug ]

[List All](#)

### Specification

**Product Description:** Mouse monoclonal antibody raised against a full-length recombinant STIM1.

**Immunogen:** STIM1 (AAH21300, 24 a.a. ~ 685 a.a) full-length recombinant protein with GST tag. MW of the GST tag alone is 26 KDa.

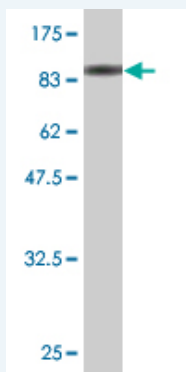
**Sequence:**  
 SHSHSEKATGTSSGANSEESTAAEFCRIDKPLCHSEDEKLSFEAVRNIHK  
 LMDDDANGDVDVEESDEFLLREDLNYHDPTVKHSTFHGEDKLISVEDLWK  
 AWKSSEVYNWTVDEVVQWLITYVELPQYEETFRLQLSGHAMPRLAVT  
 NTTMTGAVLKMTDRSHRQKLQKALDVTLVFGPPLLTRHNHLKDFMLVVS  
 IVIGVGGCWFAYIQNRYSKHEMCKMMKMLEGLHRAEQSLHDLQERLHKA  
 QEEHRTVEVEKVLHLEKLRDEINLAKQEAQRLKELREGTENERSRQKYA  
 EEELEQVREALRKAKEKESHSSWYAPEALQKWLQLTHEVEVQYYNIKK  
 QNAEKQLLVAKEGAEKIKKKRNTLFGTFHVAHSSSLDDVDHKILTAKQAL  
 SEVTAALRERLHRWQQIEILCGFQIVNPNGIHSLVAALNIDPSWMGSTRPN  
 PAHFIMTDDVDDMDEEIVSPLSMQSPSLQSSVRQRLTEPQHGLGSQRDL  
 THSDSESSLHMSDRQRVAPKPPQMSRAADEALNAMTNGSHRLIEGVHP  
 GSLVEKLPDSPALAKKALLALNHGLDKAHSLMELSPSAPPGGSPHLDSSR  
 SHSPSSPDPDTSPVGDSTRALQASRNTRIPHLAGKKAVAEEDNGSIGEET  
 DSSPGRKKFPLKIFKKPLKK

**Host:** Mouse

**Reactivity:** Human

**Isotype:** IgG2a Kappa

**Quality Control Testing:** Antibody Reactive Against Recombinant Protein.



Western Blot detection against Immunogen (98.56 KDa) .

**Storage Buffer:** In 1x PBS, pH 7.4

**Storage Instruction:** Store at -20°C or lower. Aliquot to avoid repeated freezing and thawing.

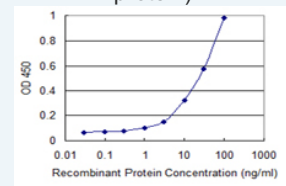
**MSDS:** [Download](#)

**Datasheet:** [Download](#)

### Application Image

Western Blot (Recombinant protein)

Sandwich ELISA (Recombinant protein)



[enlarge](#)

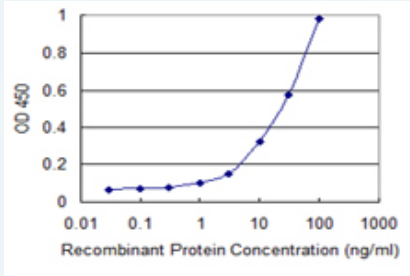
ELISA

### Applications

## Western Blot (Recombinant protein)

 [Protocol Download](#)

## Sandwich ELISA (Recombinant protein)



Detection limit for recombinant GST tagged STIM1 is 0.3 ng/ml as a capture antibody.

 [Protocol Download](#)

## ELISA

### Gene Information

Entrez GeneID: [6786](#)

GeneBank [BC021300](#)  
Accession#:

Protein [AAH21300](#)  
Accession#:

Gene Name: STIM1

Gene Alias: D11S4896E,GOK

Gene Description: stromal interaction molecule 1

Omim ID: [605921](#)

Gene Ontology: [Hyperlink](#)

**Gene Summary:** This gene encodes a type 1 transmembrane protein that mediates Ca<sup>2+</sup> influx after depletion of intracellular Ca<sup>2+</sup> stores by gating of store-operated Ca<sup>2+</sup> influx channels (SOCs). It is one of several genes located in the imprinted gene domain of 11p15.5, an important tumor-suppressor gene region. Alterations in this region have been associated with the Beckwith-Wiedemann syndrome, Wilms tumor, rhabdomyosarcoma, adrenocortical carcinoma, and lung, ovarian, and breast cancer. This gene may play a role in malignancies and disease that involve this region, as well as early hematopoiesis, by mediating attachment to stromal cells. This gene is oriented in a head-to-tail configuration with the ribonucleotide reductase 1 gene (RRM1), with the 3' end of this gene situated 1.6 kb from the 5' end of the RRM1 gene

Other Designations: -