



SZABO SCANDIC

Part of Europa Biosite

Produktinformation



Forschungsprodukte & Biochemikalien



Zellkultur & Verbrauchsmaterial



Diagnostik & molekulare Diagnostik



Laborgeräte & Service

Weitere Information auf den folgenden Seiten!
See the following pages for more information!



Lieferung & Zahlungsart

siehe unsere [Liefer- und Versandbedingungen](#)

Zuschläge

- Mindermengenzuschlag
- Trockeneiszuschlag
- Gefahrgutzuschlag
- Expressversand

SZABO-SCANDIC HandelsgmbH

Quellenstraße 110, A-1100 Wien

T. +43(0)1 489 3961-0

F. +43(0)1 489 3961-7

mail@szabo-scandic.com

www.szabo-scandic.com

[linkedin.com/company/szaboscandic](https://www.linkedin.com/company/szaboscandic) 

STIM1 monoclonal antibody (M03), clone 1B12

Catalog # : H00006786-M03

規格 : [100 ug]

[List All](#)

Specification

Product Description: Mouse monoclonal antibody raised against a full-length recombinant STIM1.

Immunogen: STIM1 (AAH21300, 24 a.a. ~ 685 a.a) full-length recombinant protein with GST tag. MW of the GST tag alone is 26 KDa.

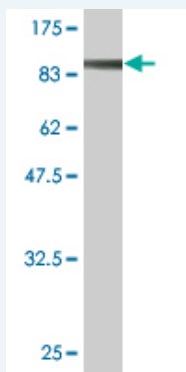
Sequence: SHSHSEKATGTSSGANSEESTAAEFCRIDKPLCHSEDEKLSFEAVRNIHK
 LMDDDANGDVDVEESDEFLLREDLNYHDPTVKHSTFHGEDKLISVEDLWK
 AWKSSEVYNWTVDEVVQWLITYVELPQYEETFRLQLSGHAMPRLAVT
 NTTMTGAVLKMTDRSHRQKLQKALDVTFLGPPLLTRHNHLKDFMLVVS
 IVIGVGGCWFAYIQNRYSKHEMCKMMKMLEGLHRAEQSLHDLQERLHKA
 QEEHRTVEVEKVLHLEKLRDEINLAKQEAQRLKELREGTENERSRQKYA
 EEELEQVREALRKAKELESHSSWYAPEALQKWLQLTHEVEVQYYNIKK
 QNAEKQLLVAKEGAEKIKKKRNTLFGTFHVAHSSSLDDVDHKILTAKQAL
 SEVTAALRERLHRWQQIEILCGFQIVNPNGIHSLVAALNIDPSWMGSTRPN
 PAHFIMTDDVDDMDEEIVSPLSMQSPSLQSSVRQRLTEPQHGLGSQRDL
 THSDSESSLHMSDRQRVAPKPPQMSRAADEALNAMTNGSHRLIEGVHP
 GSLVEKLPDSPALAKKALLALNHGLDKAHSLMELSPSAPPGGSPHLDSSR
 SHSPSSPDPDTSPVGDSTRALQASRNTRIPHLAGKKAVAEEDNGSIGEET
 DSSPGRKKFPLKIFKKPLKK

Host: Mouse

Reactivity: Human

Isotype: IgG2a Lambda

Quality Control Testing: Antibody Reactive Against Recombinant Protein.



Western Blot detection against Immunogen (98.56 KDa) .

Storage Buffer: In 1x PBS, pH 7.4

Storage Instruction: Store at -20°C or lower. Aliquot to avoid repeated freezing and thawing.

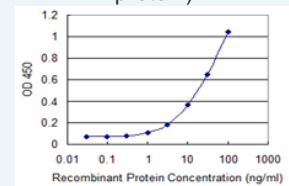
MSDS: [Download](#)

Datasheet: [Download](#)

Application Image

Western Blot (Recombinant protein)

Sandwich ELISA (Recombinant protein)



[enlarge](#)

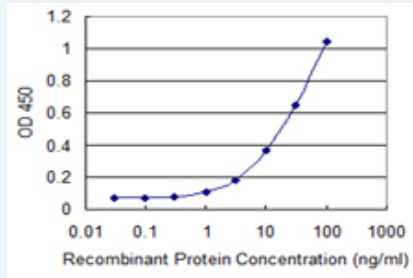
ELISA

Applications

Western Blot (Recombinant protein)

 [Protocol Download](#)

Sandwich ELISA (Recombinant protein)



Detection limit for recombinant GST tagged STIM1 is 0.3 ng/ml as a capture antibody.

 [Protocol Download](#)

ELISA

Gene Information

Entrez GeneID: [6786](#)

GeneBank [BC021300](#)
Accession#:

Protein [AAH21300](#)
Accession#:

Gene Name: STIM1

Gene Alias: D11S4896E,GOK

Gene Description: stromal interaction molecule 1

Omim ID: [605921](#)

Gene Ontology: [Hyperlink](#)

Gene Summary: This gene encodes a type 1 transmembrane protein that mediates Ca²⁺ influx after depletion of intracellular Ca²⁺ stores by gating of store-operated Ca²⁺ influx channels (SOCs). It is one of several genes located in the imprinted gene domain of 11p15.5, an important tumor-suppressor gene region. Alterations in this region have been associated with the Beckwith-Wiedemann syndrome, Wilms tumor, rhabdomyosarcoma, adrenocortical carcinoma, and lung, ovarian, and breast cancer. This gene may play a role in malignancies and disease that involve this region, as well as early hematopoiesis, by mediating attachment to stromal cells. This gene is oriented in a head-to-tail configuration with the ribonucleotide reductase 1 gene (RRM1), with the 3' end of this gene situated 1.6 kb from the 5' end of the RRM1 gene

Other Designations: -