



# SZABO SCANDIC

Part of Europa Biosite

## Produktinformation



Forschungsprodukte & Biochemikalien



Zellkultur & Verbrauchsmaterial



Diagnostik & molekulare Diagnostik



Laborgeräte & Service

Weitere Information auf den folgenden Seiten!  
See the following pages for more information!



### Lieferung & Zahlungsart

siehe unsere [Liefer- und Versandbedingungen](#)

### Zuschläge

- Mindermengenzuschlag
- Trockeneiszuschlag
- Gefahrgutzuschlag
- Expressversand

### SZABO-SCANDIC HandelsgmbH

Quellenstraße 110, A-1100 Wien

T. +43(0)1 489 3961-0

F. +43(0)1 489 3961-7

[mail@szabo-scandic.com](mailto:mail@szabo-scandic.com)

[www.szabo-scandic.com](http://www.szabo-scandic.com)

[linkedin.com/company/szaboscandic](https://www.linkedin.com/company/szaboscandic) 

## STIM1 293T Cell Transient Overexpression Lysate(Denatured)

Catalog # : H00006786-T02

規格 : [ 100 uL ]

List All

### Specification

**Transfected Cell Line:** 293T

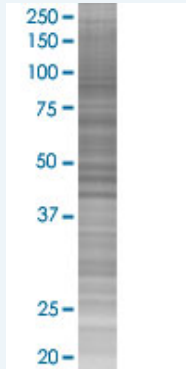
**Plasmid:** pCMV-STIM1 full-length

**Host:** Human

**Theoretical MW (kDa):** 77.4

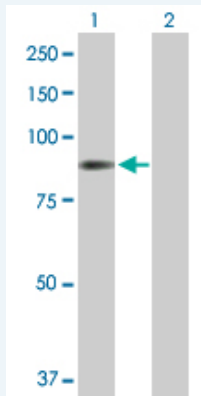
**Quality Control Testing:** Transient overexpression cell lysate was tested with Anti-STIM1 antibody (H00006786-B01) by Western Blots.

#### SDS-PAGE Gel



STIM1 transfected lysate.

#### Western Blot



Lane 1: STIM1 transfected lysate ( 77.40 KDa)

Lane 2: Non-transfected lysate.

**Storage Buffer:** 1X Sample Buffer (50 mM Tris-HCl, 2% SDS, 10% glycerol, 300 mM 2-mercaptoethanol, 0.01% Bromophenol blue)

**Storage Instruction:** Store at -80°C. Aliquot to avoid repeated freezing and thawing.

**MSDS:**  [Download](#)

### Applications

### Application Image

Western Blot

## Western Blot

### Gene Information

Entrez GeneID: [6786](#)

GeneBank Accession#: [NM\\_003156](#)

Protein Accession#: [NP\\_003147.2](#)

Gene Name: STIM1

Gene Alias: D11S4896E,GOK

Gene Description: stromal interaction molecule 1

Omim ID: [605921](#)

Gene Ontology: [Hyperlink](#)

**Gene Summary:** This gene encodes a type 1 transmembrane protein that mediates Ca<sup>2+</sup> influx after depletion of intracellular Ca<sup>2+</sup> stores by gating of store-operated Ca<sup>2+</sup> influx channels (SOCs). It is one of several genes located in the imprinted gene domain of 11p15.5, an important tumor-suppressor gene region. Alterations in this region have been associated with the Beckwith-Wiedemann syndrome, Wilms tumor, rhabdomyosarcoma, adrenocortical carcinoma, and lung, ovarian, and breast cancer. This gene may play a role in malignancies and disease that involve this region, as well as early hematopoiesis, by mediating attachment to stromal cells. This gene is oriented in a head-to-tail configuration with the ribonucleotide reductase 1 gene (RRM1), with the 3' end of this gene situated 1.6 kb from the 5' end of the RRM1 gene

Other Designations: -