



SZABO SCANDIC

Part of Europa Biosite

Produktinformation



Forschungsprodukte & Biochemikalien



Zellkultur & Verbrauchsmaterial



Diagnostik & molekulare Diagnostik



Laborgeräte & Service

Weitere Information auf den folgenden Seiten!
See the following pages for more information!



Lieferung & Zahlungsart

siehe unsere [Liefer- und Versandbedingungen](#)

Zuschläge

- Mindermengenzuschlag
- Trockeneiszuschlag
- Gefahrgutzuschlag
- Expressversand

SZABO-SCANDIC HandelsgmbH

Quellenstraße 110, A-1100 Wien

T. +43(0)1 489 3961-0

F. +43(0)1 489 3961-7

mail@szabo-scandic.com

www.szabo-scandic.com

[linkedin.com/company/szaboscandic](https://www.linkedin.com/company/szaboscandic) 

STK3 purified MaxPab rabbit polyclonal antibody (D01P) MaxPab®

Catalog # : H00006788-D01P

規格 : [100 ug]

[List All](#)

Specification

Product Description: Rabbit polyclonal antibody raised against a full-length human STK3 protein.

Immunogen: STK3 (NP_006272.2, 1 a.a. ~ 491 a.a) full-length human protein.

Sequence:
 MEQPPAPKSKLKKLSEDSLTKQPVEEVDVLEKLGEGSYGVSFKAIHKES
 GQVVAIKQVPVESDLQEIIKEISIMQQCDSPYVVKYGYGYSYFKNTDLWIVME
 YCGAGSVSDIIRLRNKTLIEDEIATILKSTLKGLEYLHFMRKIHRDIKAGNILL
 NTEGHAKLADFGVAGQLTDTMAKRNTVIGTPFWMAPEVIQEIGYNCVADI
 WSLGITSIEMAEGKPPYADIHPMRAIFMIPTNPPPTFRKPELWSDDFTDFV
 KKCLVKNPEQRATATQLLQHPFIKNAKPVSLRDLITEAMEIKAKRHEEQQ
 RELEEEEEENSDDELDSHTMVKTSVESVGTMRATSTMSEGAQTMIEHNS
 TMLESDLGTMVINSEDEEEEDGTMKRNATSPQVQRPSFMDYFDKQDFK
 NKSHENCNQMHEPFPMSKNVFPDNWVKVPQDGDFDLKNLLEELQMR
 LKALDPMEREIEELRQRYTAKRQPILDAMDAKKRRRQQNF

Host: Rabbit

Reactivity: Human

Quality Control Testing: Antibody reactive against mammalian transfected lysate.

Storage Buffer: In 1x PBS, pH 7.4

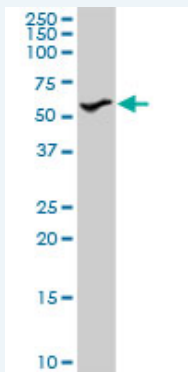
Storage Instruction: Store at -20°C or lower. Aliquot to avoid repeated freezing and thawing.

MSDS: [Download](#)

Datasheet: [Download](#)

Applications

Western Blot (Cell lysate)



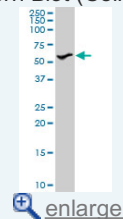
STK3 MaxPab rabbit polyclonal antibody. Western Blot analysis of STK3 expression in A-431.

[Protocol Download](#)

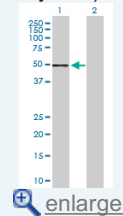
Western Blot (Transfected lysate)

Application Image

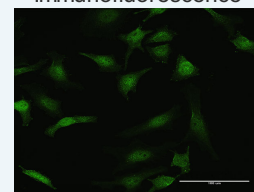
Western Blot (Cell lysate)



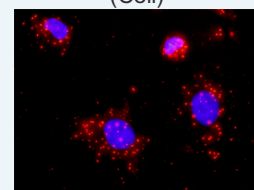
Western Blot (Transfected lysate)

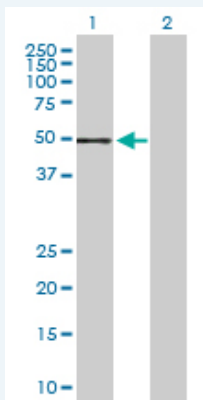


Immunofluorescence




In situ Proximity Ligation Assay (Cell)



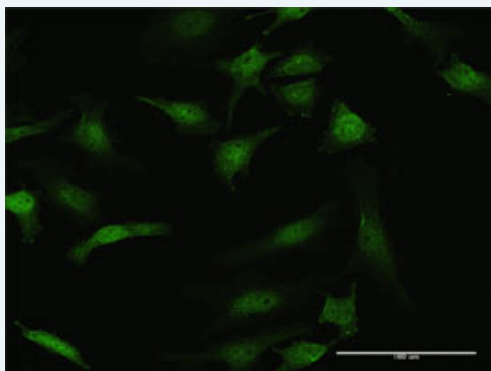


Western Blot analysis of STK3 expression in transfected 293T cell line ([H00006788-T03](#)) by STK3 MaxPab polyclonal antibody.

Lane 1: STK3 transfected lysate(56.30 KDa).
Lane 2: Non-transfected lysate.


 [Protocol Download](#)

Immunofluorescence

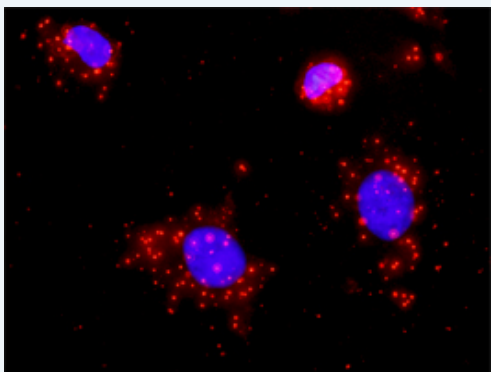


 [enlarge this image](#)

Immunofluorescence of purified MaxPab antibody to STK3 on HeLa cell. [antibody concentration 10 ug/ml]

 [Protocol Download](#)

In situ Proximity Ligation Assay (Cell)



Proximity Ligation Analysis of protein-protein interactions between STK3 and CASP3. HeLa cells were stained with anti-STK3 rabbit purified polyclonal 1:1200 and anti-CASP3 mouse monoclonal antibody 1:50. Each red dot represents the detection of protein-protein interaction complex, and nuclei were counterstained with DAPI (blue).

Gene Information

Entrez GeneID: [6788](#)

GeneBank [NM_006281.2](#)

Accession#:

Protein [NP_006272.2](#)

Accession#:

Gene Name: STK3

Gene Alias: FLJ90748,KRS1,MST2

Gene Description: serine/threonine kinase 3 (STE20 homolog, yeast)

Omim ID: [605030](#)

Gene Ontology: [Hyperlink](#)

Gene Summary: Protein kinase activation is a frequent response of cells to treatment with growth factors, chemicals, heat shock, or apoptosis-inducing agents. This protein kinase activation presumably allows cells to resist unfavorable environmental conditions. The yeast 'sterile 20' (Ste20) kinase acts upstream of the mitogen-activated protein kinase (MAPK) cascade that is activated under a variety of stress conditions. MST2 was identified as a kinase that is activated by the proapoptotic agents staurosporine and FAS ligand (MIM 134638) (Taylor et al., 1996 [PubMed 8816758]; Lee et al., 2001 [PubMed 11278283]).[supplied by OMIM]

Other Designations: serine/threonine kinase 3 (Ste20, yeast homolog)

Gene Pathway

[MAPK signaling pathway](#)

[服務條款](#) | [隱私權政策](#) | [著作及商標](#) | [網站地圖](#)

©2016 亞諾法生技股份有限公司 Abnova Corporation. 版權所有.