



SZABO SCANDIC

Part of Europa Biosite

Produktinformation



Forschungsprodukte & Biochemikalien



Zellkultur & Verbrauchsmaterial



Diagnostik & molekulare Diagnostik



Laborgeräte & Service

Weitere Information auf den folgenden Seiten!
See the following pages for more information!



Lieferung & Zahlungsart

siehe unsere [Liefer- und Versandbedingungen](#)

Zuschläge

- Mindermengenzuschlag
- Trockeneiszuschlag
- Gefahrgutzuschlag
- Expressversand

SZABO-SCANDIC HandelsgmbH

Quellenstraße 110, A-1100 Wien

T. +43(0)1 489 3961-0

F. +43(0)1 489 3961-7

mail@szabo-scandic.com

www.szabo-scandic.com

[linkedin.com/company/szaboscandic](https://www.linkedin.com/company/szaboscandic) 

STK3 293T Cell Transient Overexpression Lysate(Denatured)

Catalog # : H00006788-T03

規格 : [100 uL]

[List All](#)

Specification

Transfected Cell Line: 293T

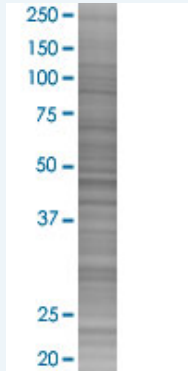
Plasmid: pCMV-STK3 full-length

Host: Human

Theoretical MW (kDa): 56.3

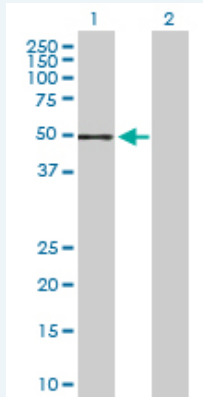
Quality Control Testing: Transient overexpression cell lysate was tested with Anti-STK3 antibody (H00006788-D01P) by Western Blots.

SDS-PAGE Gel



STK3 transfected lysate.

Western Blot



Lane 1: STK3 transfected lysate (56.30 KDa)

Lane 2: Non-transfected lysate.

Storage Buffer: 1X Sample Buffer (50 mM Tris-HCl, 2% SDS, 10% glycerol, 300 mM 2-mercaptoethanol, 0.01% Bromophenol blue)

Storage Instruction: Store at -80°C. Aliquot to avoid repeated freezing and thawing.

MSDS:  [Download](#)

Applications

Application Image

Western Blot

Western Blot

Gene Information

Entrez GeneID: [6788](#)

GeneBank Accession#: [NM_006281.2](#)

Protein Accession#: [NP_006272.2](#)

Gene Name: STK3

Gene Alias: FLJ90748,KRS1,MST2

Gene Description: serine/threonine kinase 3 (STE20 homolog, yeast)

Omim ID: [605030](#)

Gene Ontology: [Hyperlink](#)

Gene Summary: Protein kinase activation is a frequent response of cells to treatment with growth factors, chemicals, heat shock, or apoptosis-inducing agents. This protein kinase activation presumably allows cells to resist unfavorable environmental conditions. The yeast 'sterile 20' (Ste20) kinase acts upstream of the mitogen-activated protein kinase (MAPK) cascade that is activated under a variety of stress conditions. MST2 was identified as a kinase that is activated by the proapoptotic agents strausrosporine and FAS ligand (MIM 134638) (Taylor et al., 1996 [PubMed 8816758]; Lee et al., 2001 [PubMed 11278283]).[supplied by OMIM

Other Designations: serine/threonine kinase 3 (Ste20, yeast homolog)

Gene Pathway

[MAPK signaling pathway](#)