



SZABO SCANDIC

Part of Europa Biosite

Produktinformation



Forschungsprodukte & Biochemikalien



Zellkultur & Verbrauchsmaterial



Diagnostik & molekulare Diagnostik



Laborgeräte & Service

Weitere Information auf den folgenden Seiten!
See the following pages for more information!



Lieferung & Zahlungsart

siehe unsere [Liefer- und Versandbedingungen](#)

Zuschläge

- Mindermengenzuschlag
- Trockeneiszuschlag
- Gefahrgutzuschlag
- Expressversand

SZABO-SCANDIC HandelsgmbH

Quellenstraße 110, A-1100 Wien

T. +43(0)1 489 3961-0

F. +43(0)1 489 3961-7

mail@szabo-scandic.com

www.szabo-scandic.com

[linkedin.com/company/szaboscandic](https://www.linkedin.com/company/szaboscandic) 

AURKA monoclonal antibody (M01), clone 5F8

Catalog # : H00006790-M01

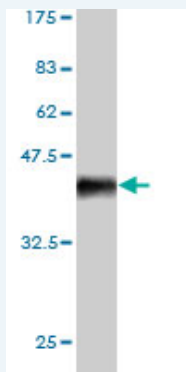
規格 : [100 ug]

[List All](#)

Specification

Product Description:	Mouse monoclonal antibody raised against a partial recombinant STK6.
Immunogen:	AURKA (NP_940835, 1 a.a. ~ 110 a.a) partial recombinant protein with GST tag. MW of the GST tag alone is 26 KDa.
Sequence:	MDRSKENCISGPVKATAPVGGPKRVLVTQQFPCQNPLPVNSGQAQRVL CPSNSSQRIPLQAQKLVSSHKPVQKQKQLQATSVPHPVSRPLNNTQK SKQPLPSAPENNP
Host:	Mouse
Reactivity:	Human
Isotype:	IgG2a Kappa

Quality Control Testing: Antibody Reactive Against Recombinant Protein.



Western Blot detection against Immunogen (37.84 KDa) .

Storage Buffer: In 1x PBS, pH 7.4

Storage Instruction: Store at -20°C or lower. Aliquot to avoid repeated freezing and thawing.

MSDS: [Download](#)

Datasheet: [Download](#)

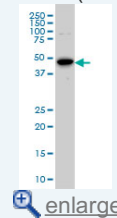
Publication Reference

- KIBRA Protein Phosphorylation Is Regulated by Mitotic Kinase Aurora and Protein Phosphatase 1.
Xiao L, Chen Y, Ji M, Volle DJ, Lewis RE, Tsai MY, Dong J.J Biol Chem. 2011 Oct 21;286(42):36304-15. Epub 2011 Aug 30.
- Aurora Kinase A expression is associated with lung cancer histological-subtypes and with tumor de-differentiation.
Lo Iacono M, Monica V, Saviozzi S, Ceppi P, Bracco E, Papotti M, Scagliotti GV.J Transl Med. 2011 Jun 30;9:100.

Applications

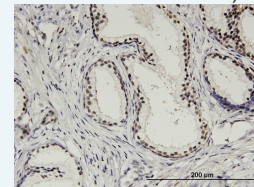
Application Image

Western Blot (Cell lysate)



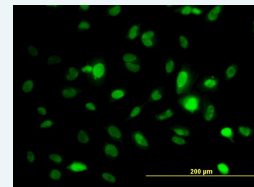
Western Blot (Recombinant protein)

Immunohistochemistry (Formalin/PFA-fixed paraffin-embedded sections)



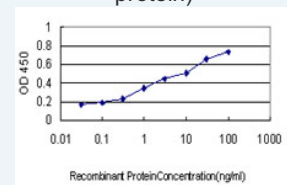
[enlarge](#)

Immunofluorescence



[enlarge](#)

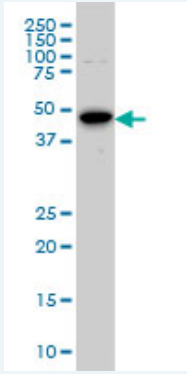
Sandwich ELISA (Recombinant protein)



[enlarge](#)

ELISA

Western Blot (Cell lysate)



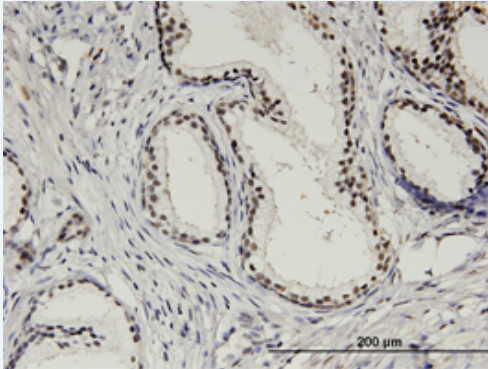
STK6 monoclonal antibody (M01), clone 5F8 Western Blot analysis of STK6 expression in HeLa S3 NE (Cat # L013V3).

[Protocol Download](#)

Western Blot (Recombinant protein)

[Protocol Download](#)

Immunohistochemistry (Formalin/PFA-fixed paraffin-embedded sections)

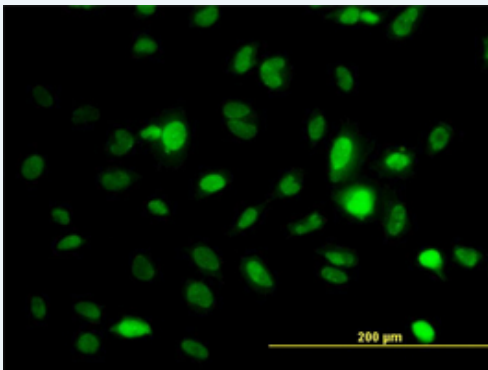


[enlarge this image](#)

Immunoperoxidase of monoclonal antibody to AURKA on formalin-fixed paraffin-embedded human prostate. [antibody concentration 6 ug/ml]

[Protocol Download](#)

Immunofluorescence

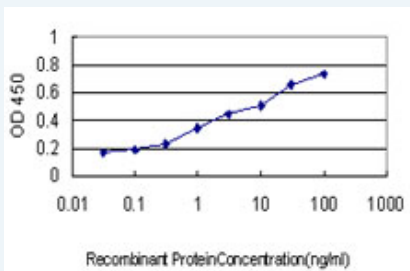


[enlarge this image](#)

Immunofluorescence of monoclonal antibody to STK6 on HeLa cell. [antibody concentration 30 ug/ml]

[Protocol Download](#)

Sandwich ELISA (Recombinant protein)



Detection limit for recombinant GST tagged STK6 is approximately 0.1ng/ml as a capture

antibody.

 Protocol Download

ELISA

Gene Information

Entrez GeneID: [6790](#)

**GeneBank
Accession#:** [NM_198433](#)

**Protein
Accession#:** [NP_940835](#)

Gene Name: AURKA

Gene Alias: AIK,ARK1,AURA,AURORA2,BTAK,MGC34538,STK15,STK6,STK7

**Gene
Description:** aurora kinase A

Omim ID: [114500](#), [603072](#)

Gene Ontology: [Hyperlink](#)

Gene Summary: The protein encoded by this gene is a cell cycle-regulated kinase that appears to be involved in microtubule formation and/or stabilization at the spindle pole during chromosome segregation. The encoded protein is found at the centrosome in interphase cells and at the spindle poles in mitosis. This gene may play a role in tumor development and progression. A processed pseudogene of this gene has been found on chromosome 1, and an unprocessed pseudogene has been found on chromosome 10. Multiple transcript variants encoding the same protein have been found for this gene. [provided by RefSeq]

**Other
Designations:** IPL1-related
kinase,OTTHUMP00000031340,OTTHUMP00000031342,OTTHUMP00000031343,OTTHUMP00000031344,OTTHUMP00000031345,OTTHUMP00000166071,aurora-A,aurora-related kinase 1,aurora/IPL1-like kinase,breast-tumor-amplified kinase,serine/threonine kinase 15,serine/

Related Disease

[Adenocarcinoma](#) [Body Weight](#) [Breast cancer](#) [Breast Neoplasms](#) [Carcinoma](#) [Carcinoma, Ductal](#), [Breast Carcinoma](#), [Hepatocellular Carcinoma](#), [Medullary Carcinoma](#), [Non-Small-Cell Lung Carcinoma](#), [Renal Cell Carcinoma](#), [Squamous Cell Chromosome Aberrations](#) [Colonic Neoplasms](#) [Colorectal Neoplasms](#) [Colorectal Neoplasms, Hereditary Nonpolyposis](#) [Disease Progression](#) [Esophageal Neoplasms](#) [Genetic Predisposition to Disease](#) [Genomic Instability](#)

... see more

[服務條款](#) | [隱私權政策](#) | [著作及商標](#) | [網站地圖](#)

©2016 亞諾法生技股份有限公司 Abnova Corporation. 版權所有.