



SZABO SCANDIC

Part of Europa Biosite

Produktinformation



Forschungsprodukte & Biochemikalien



Zellkultur & Verbrauchsmaterial



Diagnostik & molekulare Diagnostik



Laborgeräte & Service

Weitere Information auf den folgenden Seiten!
See the following pages for more information!



Lieferung & Zahlungsart

siehe unsere [Liefer- und Versandbedingungen](#)

Zuschläge

- Mindermengenzuschlag
- Trockeneiszuschlag
- Gefahrgutzuschlag
- Expressversand

SZABO-SCANDIC HandelsgmbH

Quellenstraße 110, A-1100 Wien

T. +43(0)1 489 3961-0

F. +43(0)1 489 3961-7

mail@szabo-scandic.com

www.szabo-scandic.com

[linkedin.com/company/szaboscandic](https://www.linkedin.com/company/szaboscandic) 

MED6 monoclonal antibody (M07), clone 4C2

Catalog # : H00010001-M07

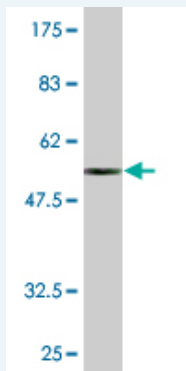
規格 : [100 ug]

List All

Specification

Product Description:	Mouse monoclonal antibody raised against a full-length recombinant MED6.
Immunogen:	MED6 (AAH04106, 1 a.a. ~ 246 a.a) full-length recombinant protein with GST tag. MW of the GST tag alone is 26 KDa.
Sequence:	MAAVDIRDNLLGISWVDSSWIPILNSGSVLDYFSERSNPFYDRTCNNEV KMQRLLTLEHLNQMVGIEYILLHAQEPILFIIRKQQRQSPAQVIPLADYYIIAG VIYQAPDLGSVINSRVLTAVHGIQSAFDEAMSYCRYHPSKGYWWHFKDH EEQDKVRPKAKRKEEPSSIFQRQRVDALLDLRQKFPKPVQLKPGEKP VPVDQTKKEAEPETVKPEEKETTKNVQQTVSAKGPPEKRMRLQ
Host:	Mouse
Reactivity:	Human
Isotype:	IgG2b Kappa

Quality Control Testing: Antibody Reactive Against Recombinant Protein.



Western Blot detection against Immunogen (52.8 KDa) .

Storage Buffer: In 1x PBS, pH 7.4

Storage Instruction: Store at -20°C or lower. Aliquot to avoid repeated freezing and thawing.

MSDS: [Download](#)

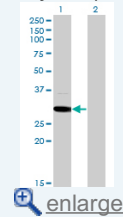
Datasheet: [Download](#)

Applications

Western Blot (Transfected lysate)

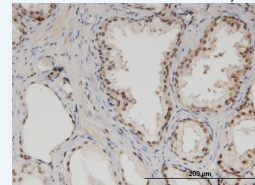
Application Image

Western Blot (Transfected lysate)



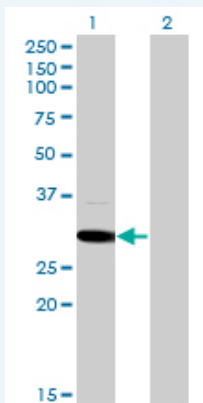
Western Blot (Recombinant protein)

Immunohistochemistry (Formalin/PFA-fixed paraffin-embedded sections)



[enlarge](#)

ELISA



Western Blot analysis of MED6 expression in transfected 293T cell line by MED6 monoclonal antibody (M07), clone 4C2.

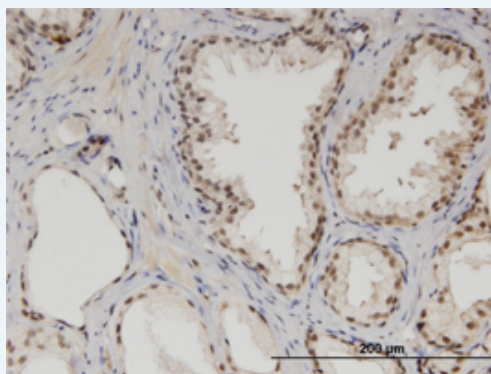
Lane 1: MED6 transfected lysate(28.4 KDa).
Lane 2: Non-transfected lysate.

[Protocol Download](#)

Western Blot (Recombinant protein)

[Protocol Download](#)

Immunohistochemistry (Formalin/PFA-fixed paraffin-embedded sections)



[enlarge this image](#)

Immunoperoxidase of monoclonal antibody to MED6 on formalin-fixed paraffin-embedded human prostate. [antibody concentration 3 ug/ml]

[Protocol Download](#)

ELISA

Gene Information

Entrez GeneID: [10001](#)

GeneBank [BC004106](#)
Accession#:

Protein [AAH04106](#)
Accession#:

Gene Name: MED6

Gene Alias: NY-REN-28

Gene Description: mediator complex subunit 6

Omim ID: [602984](#)

Gene Ontology: [Hyperlink](#)

Other Designations: mediator of RNA polymerase II transcription, subunit 6 homolog

Related Disease

[Disease Progression](#) [Disease Susceptibility](#) [HIV Infections](#)

[服務條款](#) | [隱私權政策](#) | [著作及商標](#) | [網站地圖](#)

©2016 亞諾法生技股份有限公司 Abnova Corporation. 版權所有.