



# SZABO SCANDIC

Part of Europa Biosite

## Produktinformation



Forschungsprodukte & Biochemikalien



Zellkultur & Verbrauchsmaterial



Diagnostik & molekulare Diagnostik



Laborgeräte & Service

Weitere Information auf den folgenden Seiten!  
See the following pages for more information!



### Lieferung & Zahlungsart

siehe unsere [Liefer- und Versandbedingungen](#)

### Zuschläge

- Mindermengenzuschlag
- Trockeneiszuschlag
- Gefahrgutzuschlag
- Expressversand

### SZABO-SCANDIC HandelsgmbH

Quellenstraße 110, A-1100 Wien

T. +43(0)1 489 3961-0

F. +43(0)1 489 3961-7

[mail@szabo-scandic.com](mailto:mail@szabo-scandic.com)

[www.szabo-scandic.com](http://www.szabo-scandic.com)

[linkedin.com/company/szaboscandic](https://www.linkedin.com/company/szaboscandic) 

## NR2E3 monoclonal antibody (M01), clone 2A12

Catalog # : H00010002-M01

規格 : [ 100 ug ]

[List All](#)

### Specification

**Product Description:** Mouse monoclonal antibody raised against a full length recombinant NR2E3.

**Immunogen:** NR2E3 (AAH41421, 1 a.a. ~ 322 a.a) full-length recombinant protein with GST tag. MW of the GST tag alone is 26 KDa.

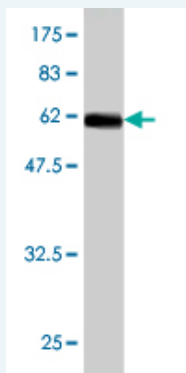
**Sequence:** MCPVDKAHRNQCQACRLKKCLQAGMNQDAVQNERQPRSTAQVHLDSESNTESRPESLVAPPAPAGRSPRGPTPMSAARALGHHFMASLITAETCAKLEPEDADENIDVTSNDPEFPSSPYSSSSPCGLDSIHETSARLLFMAVKWAKNLPVFSSLPFRDQVILLEEAWSEFLGAIQWSLPLDSCPLLAPPEASAGGAQGRLTLASMETRVLQETISRFRALAVDPTAFACMKALVLFKPETRGLKDPEHVEALQDQSQVMLSQHSKAHHPSPVRFGLLLLLLPSLRFITAERIELLLFRKTIGNTPMEKLLCDMFKN

**Host:** Mouse

**Reactivity:** Human

**Isotype:** IgG1

**Quality Control Testing:** Antibody Reactive Against Recombinant Protein.



Western Blot detection against Immunogen (61.16 KDa) .

**Storage Buffer:** In 1x PBS, pH 7.4

**Storage Instruction:** Store at -20°C or lower. Aliquot to avoid repeated freezing and thawing.

**MSDS:** [Download](#)

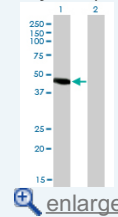
**Datasheet:** [Download](#)

### Applications

**Western Blot (Transfected lysate)**

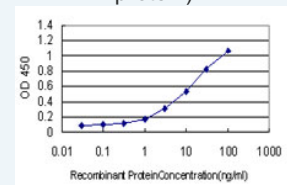
### Application Image

Western Blot (Transfected lysate)



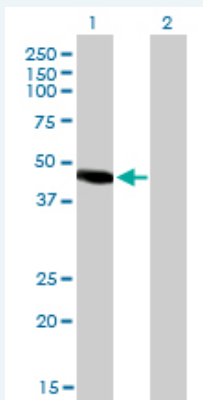
Western Blot (Recombinant protein)

Sandwich ELISA (Recombinant protein)



[enlarge](#)

ELISA



Western Blot analysis of NR2E3 expression in transfected 293T cell line by NR2E3 monoclonal antibody (M01), clone 2A12.

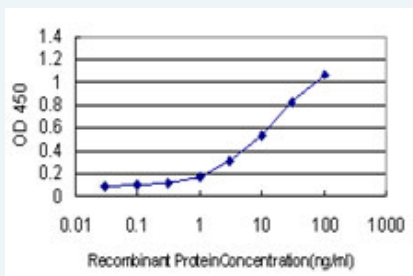
Lane 1: NR2E3 transfected lysate(44.7 KDa).  
Lane 2: Non-transfected lysate.

[Protocol Download](#)

### Western Blot (Recombinant protein)

[Protocol Download](#)

### Sandwich ELISA (Recombinant protein)



Detection limit for recombinant GST tagged NR2E3 is approximately 0.3ng/ml as a capture antibody.

[Protocol Download](#)

### ELISA

### Gene Information

Entrez GeneID: [10002](#)

GeneBank [BC041421](#)  
Accession#:

Protein [AAH41421](#)  
Accession#:

Gene Name: NR2E3

Gene Alias: ESCS,MGC49976,PNR,RNR,RP37,rd7

Gene Description: nuclear receptor subfamily 2, group E, member 3

Omim ID: [268100](#), [604485](#), [611131](#)

Gene Ontology: [Hyperlink](#)

**Gene Summary:** This protein is part of a large family of nuclear receptor transcription factors involved in signaling pathways. Nuclear receptors have been shown to regulate pathways involved in embryonic development, as well as in maintenance of proper cell function in adults. Members of this family are characterized by discrete domains that function in DNA and

ligand binding. This gene encodes a retinal nuclear receptor that is a ligand-dependent transcription factor. Defects in this gene are a cause of enhanced S cone syndrome. Alternatively spliced transcript variants encoding different isoforms have been identified. [provided by RefSeq

**Other Designations:** photoreceptor-specific nuclear receptor,retina-specific nuclear receptor

**Related Disease**

Retinal Diseases Retinitis Pigmentosa

[服務條款](#) | [隱私權政策](#) | [著作及商標](#) | [網站地圖](#)

©2016 亞諾法生技股份有限公司 Abnova Corporation. 版權所有.