



SZABO SCANDIC

Part of Europa Biosite

Produktinformation



Forschungsprodukte & Biochemikalien



Zellkultur & Verbrauchsmaterial



Diagnostik & molekulare Diagnostik



Laborgeräte & Service

Weitere Information auf den folgenden Seiten!
See the following pages for more information!



Lieferung & Zahlungsart

siehe unsere [Liefer- und Versandbedingungen](#)

Zuschläge

- Mindermengenzuschlag
- Trockeneiszuschlag
- Gefahrgutzuschlag
- Expressversand

SZABO-SCANDIC HandelsgmbH

Quellenstraße 110, A-1100 Wien

T. +43(0)1 489 3961-0

F. +43(0)1 489 3961-7

mail@szabo-scandic.com

www.szabo-scandic.com

[linkedin.com/company/szaboscandic](https://www.linkedin.com/company/szaboscandic) 

GNPDA1 MaxPab mouse polyclonal antibody (B01) MaxPab®

Catalog # : H00010007-B01

規格 : [50 uL]

[List All](#)

Specification

Product Description: Mouse polyclonal antibody raised against a full-length human GNPDA1 protein.

Immunogen: GNPDA1 (AAH12853, 1 a.a. ~ 289 a.a) full-length human protein.

Sequence:
 MKLIILEHYSQASEWAAKYIRNRIQFNPGPEKYFTLGLPTGSTPLGCVKLL
 IEYYKNGDLSFKYVKTFNMDEYVGLPRDHPESYHSFMWNNFFKHIDIHPE
 NTHILDGNAVDLQAECDAFEEKIKAAGGIELFVGGIGPDGHIAFIEPGSSLV
 SRTRVKTLAMDTILANARFFDGELTKVPTMALTVGVTVM DAREVMILIT
 GAHKAFALYKAIEEGVNHMWTVSAFQQHPRTVFVCDDEATLLELKVKTVK
 YFKGLMLVHNKLVDP LYSIKEKETEKSSKPKPYSD

Host: Mouse

Reactivity: Human

Quality Control Testing: Antibody reactive against mammalian transfected lysate.

Storage Buffer: No additive

Storage Instruction: Store at -20°C or lower. Aliquot to avoid repeated freezing and thawing.

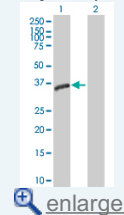
Note: For IHC and IF applications, antibody purification with Protein A will be needed prior to use.

MSDS: [Download](#)

Datasheet: [Download](#)

Application Image

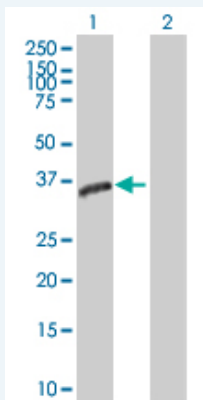
Western Blot (Transfected lysate)



[enlarge](#)

Applications

Western Blot (Transfected lysate)



Western Blot analysis of GNPDA1 expression in transfected 293T cell line (H00010007-T01) by GNPDA1 MaxPab polyclonal antibody.

Lane 1:GNPDA1 transfected lysate(31.9 KDa).
 Lane 2:Non-transfected lysate.

Gene Information

Entrez GeneID: [10007](#)

**GeneBank
Accession#:** [BC012853](#)

**Protein
Accession#:** [AAH12853](#)

Gene Name: GNPDA1

Gene Alias: GNPDA,GNPI,GPI,HLN,KIAA0060

**Gene
Description:** glucosamine-6-phosphate deaminase 1

Omim ID: [601798](#)

Gene Ontology: [Hyperlink](#)

**Other
Designations:** glucosamine-6-phosphate isomerase,oscillin

Gene Pathway

[Amino sugar and nucleotide sugar metabolism](#) [Metabolic pathways](#)