



# SZABO SCANDIC

Part of Europa Biosite

## Produktinformation



Forschungsprodukte & Biochemikalien



Zellkultur & Verbrauchsmaterial



Diagnostik & molekulare Diagnostik



Laborgeräte & Service

Weitere Information auf den folgenden Seiten!  
See the following pages for more information!



### Lieferung & Zahlungsart

siehe unsere [Liefer- und Versandbedingungen](#)

### Zuschläge

- Mindermengenzuschlag
- Trockeneiszuschlag
- Gefahrgutzuschlag
- Expressversand

### SZABO-SCANDIC HandelsgmbH

Quellenstraße 110, A-1100 Wien

T. +43(0)1 489 3961-0

F. +43(0)1 489 3961-7

[mail@szabo-scandic.com](mailto:mail@szabo-scandic.com)

[www.szabo-scandic.com](http://www.szabo-scandic.com)

[linkedin.com/company/szaboscandic](https://www.linkedin.com/company/szaboscandic) 

## GNPDA1 purified MaxPab mouse polyclonal antibody (B01P) MaxPab®

Catalog # : H00010007-B01P

規格 : [ 50 ug ]

[List All](#)

### Specification

**Product Description:** Mouse polyclonal antibody raised against a full-length human GNPDA1 protein.

**Immunogen:** GNPDA1 (AAH12853, 1 a.a. ~ 289 a.a) full-length human protein.

**Sequence:**  
 MKLIILEHYSQASEWAAKYIRNRIQFNPGPEKYFTLGLPTGSTPLGCVKLL  
 IEYYKNGDLSFKYVKTFNMDEYVGLPRDHPESYHSFMWNNFFKHIDIHPE  
 NTHILDGNAVDLQAECDAFEEKIKAAGGIELFVGGIGPDGHIAFIEPGSSLV  
 SRTRVKTLAMDTILANARFFDGELTKVPTMALTVGVTVM DAREVMILIT  
 GAHKAFALYKAIEEGVNHMWTVSAFQQHPRTVFVCDDEATLLELKVKTVK  
 YFKGLMLVHNKLVDP LYSIKEKETEKSSKPKPYSD

**Host:** Mouse

**Reactivity:** Human

**Quality Control Testing:** Antibody reactive against mammalian transfected lysate.

**Storage Buffer:** In 1x PBS, pH 7.4

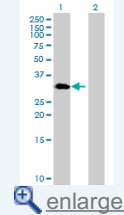
**Storage Instruction:** Store at -20°C or lower. Aliquot to avoid repeated freezing and thawing.

**MSDS:** [Download](#)

**Datasheet:** [Download](#)

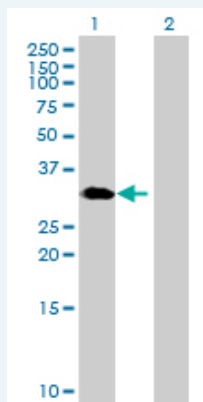
### Application Image

Western Blot (Transfected lysate)



### Applications

Western Blot (Transfected lysate)



Western Blot analysis of GNPDA1 expression in transfected 293T cell line (H00010007-T01) by GNPDA1 MaxPab polyclonal antibody.

Lane1:GNPDA1 transfected lysate(31.9 KDa).  
 Lane 2:Non-transfected lysate.

[Protocol Download](#)

### Gene Information

**Entrez GeneID:** [10007](#)

**GeneBank  
Accession#:** [BC012853](#)

**Protein  
Accession#:** [AAH12853](#)

**Gene Name:** GNPDA1

**Gene Alias:** GNPDA,GNPI,GPI,HLN,KIAA0060

**Gene  
Description:** glucosamine-6-phosphate deaminase 1

**Omim ID:** [601798](#)

**Gene Ontology:** [Hyperlink](#)

**Other  
Designations:** glucosamine-6-phosphate isomerase,oscillin

### **Gene Pathway**

[Amino sugar and nucleotide sugar metabolism](#) [Metabolic pathways](#)

[服務條款](#) | [隱私權政策](#) | [著作及商標](#) | [網站地圖](#)

©2016 亞諾法生技股份有限公司 Abnova Corporation. 版權所有.