



# SZABO SCANDIC

Part of Europa Biosite

## Produktinformation



Forschungsprodukte & Biochemikalien



Zellkultur & Verbrauchsmaterial



Diagnostik & molekulare Diagnostik



Laborgeräte & Service

Weitere Information auf den folgenden Seiten!  
See the following pages for more information!



### Lieferung & Zahlungsart

siehe unsere [Liefer- und Versandbedingungen](#)

### Zuschläge

- Mindermengenzuschlag
- Trockeneiszuschlag
- Gefahrgutzuschlag
- Expressversand

### SZABO-SCANDIC HandelsgmbH

Quellenstraße 110, A-1100 Wien

T. +43(0)1 489 3961-0

F. +43(0)1 489 3961-7

[mail@szabo-scandic.com](mailto:mail@szabo-scandic.com)

[www.szabo-scandic.com](http://www.szabo-scandic.com)

[linkedin.com/company/szaboscandic](https://www.linkedin.com/company/szaboscandic) 

## BCL2L10 polyclonal antibody (A01)

Catalog # : H00010017-A01

規格 : [ 50 uL ]

List All

### Specification

**Product Description:** Mouse polyclonal antibody raised against a partial recombinant BCL2L10.

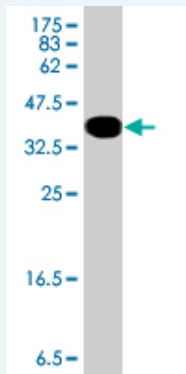
**Immunogen:** BCL2L10 (NP\_065129, 1 a.a. ~ 92 a.a) partial recombinant protein with GST tag.

**Sequence:** MVDQLRERTTMADPLRERTELLLDYLGVCAREPGTPEPAPSTPEAAVL  
RSAAARLRQIHRFFSAYLGYGNRFELVALMADSVLSDSPGP

**Host:** Mouse

**Reactivity:** Human

**Quality Control Testing:** Antibody Reactive Against Recombinant Protein.



### Application Image

Western Blot (Recombinant protein)

ELISA

**Storage Buffer:** 50 % glycerol

**Storage Instruction:** Store at -20°C or lower. Aliquot to avoid repeated freezing and thawing.

**MSDS:**  [Download](#)


**Datasheet:**  [Download](#)

### Publication Reference

- Subcellular dynamics of the maternal cell death regulator BCL2L10 in human preimplantation embryos.  
Guerin JF, Cornut-Thibaut A, Giscard-Destaing S, Pouvreau S, Guillemin Y, Aouacheria A. Hum Reprod. 2013 Jan 4.
- Oocytes and early embryos selectively express the survival factor BCL2L10.  
Guillemin Y, Lalle P, Gillet G, Guerin JF, Hamamah S, Aouacheria A. J Mol Med. 2009 Sep;87(9):923-40. Epub 2009 Jun 24.

### Applications

Western Blot (Recombinant protein)

 [Protocol Download](#)

ELISA

## Gene Information

**Entrez GeneID:** [10017](#)

**GeneBank** [NM\\_020396](#)

**Accession#:**

**Protein** [NP\\_065129](#)

**Accession#:**

**Gene Name:** BCL2L10

**Gene Alias:** BCL-B, Boo, Diva, MGC129810, MGC129811

**Gene Description:** BCL2-like 10 (apoptosis facilitator)

**Omim ID:** [606910](#)

**Gene Ontology:** [Hyperlink](#)

**Gene Summary:** The protein encoded by this gene belongs to the BCL-2 protein family. BCL-2 family members form hetero- or homodimers and act as anti- or pro-apoptotic regulators that are involved in a wide variety of cellular activities. The protein encoded by this gene contains conserved BH4, BH1 and BH2 domains. This protein can interact with other members of BCL-2 protein family including BCL2, BCL2L1/BCL-X(L), and BAX. Overexpression of this gene has been shown to suppress cell apoptosis possibly through the prevention of cytochrome C release from the mitochondria, and thus activating caspase-3 activation. The mouse counterpart of this protein is found to interact with Apaf1 and forms a protein complex with Caspase 9, which suggests the involvement of this protein in APAF1 and CASPASE 9 related apoptotic pathway. [provided by RefSeq]

**Other Designations:** -

## Related Disease

[Cardiovascular Diseases Diabetes Mellitus, Type 2 Edema](#)  
[Genetic Predisposition to Disease Hematologic Diseases Hodgkin Disease Lymphoma, B-Cell Lymphoma, Follicular Lymphoma, Large B-Cell, Diffuse Lymphoproliferative Disorders Occupational Diseases Waldenstrom Macroglobulinemia Werner syndrome](#)