



SZABO SCANDIC

Part of Europa Biosite

Produktinformation



Forschungsprodukte & Biochemikalien



Zellkultur & Verbrauchsmaterial



Diagnostik & molekulare Diagnostik



Laborgeräte & Service

Weitere Information auf den folgenden Seiten!
See the following pages for more information!



Lieferung & Zahlungsart

siehe unsere [Liefer- und Versandbedingungen](#)

Zuschläge

- Mindermengenzuschlag
- Trockeneiszuschlag
- Gefahrgutzuschlag
- Expressversand

SZABO-SCANDIC HandelsgmbH

Quellenstraße 110, A-1100 Wien

T. +43(0)1 489 3961-0

F. +43(0)1 489 3961-7

mail@szabo-scandic.com

www.szabo-scandic.com

[linkedin.com/company/szaboscandic](https://www.linkedin.com/company/szaboscandic) 

BCL2L10 MaxPab mouse polyclonal antibody (B01) MaxPab®

Catalog # : H00010017-B01

規格 : [50 uL]

[List All](#)

Specification

Product Description: Mouse polyclonal antibody raised against a full-length human BCL2L10 protein.

Immunogen: BCL2L10 (NP_065129, 1 a.a. ~ 204 a.a) full-length human protein.

Sequence:
 MVDQLRERTTMADPLRRETELLADYLGYCAREPGTPEPAPSTPEAAVL
 RSAARLRQIHRFFSAYLGYGNRFELVALMADSVLSDSPGPTWGRVV
 TLVTFAGTLLERGPLVTARWKKWGFQPRLKEQEGDVARDCQRLVALLS
 SRLMGQHRAWLQAQGGWDGFCHFFRTPFPLAFWRKQLVQAFLSCLL
 TTAFIYLWTRLL

Host: Mouse

Reactivity: Human

Quality Control Testing: Antibody reactive against mammalian transfected lysate.

Storage Buffer: No additive

Storage Instruction: Store at -20°C or lower. Aliquot to avoid repeated freezing and thawing.

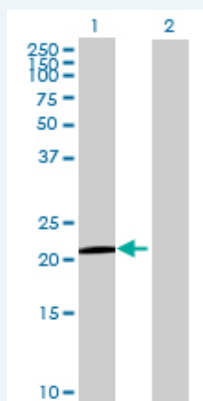
Note: For IHC and IF applications, antibody purification with Protein A will be needed prior to use.

MSDS:  [Download](#)

Datasheet:  [Download](#)

Applications

Western Blot (Transfected lysate)



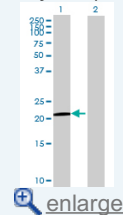
Western Blot analysis of BCL2L10 expression in transfected 293T cell line (H00010017-T01) by BCL2L10 MaxPab polyclonal antibody.


Lane1:BCL2L10 transfected lysate(22.44 KDa).

Lane2:Non-transfected lysate.

Application Image

Western Blot (Transfected lysate)



 [Protocol Download](#)

Gene Information

Entrez GeneID: [10017](#)

GeneBank Accession#: [NM_020396](#)

Protein Accession#: [NP_065129](#)

Gene Name: BCL2L10

Gene Alias: BCL-B, Boo, Diva, MGC129810, MGC129811

Gene Description: BCL2-like 10 (apoptosis facilitator)

Omim ID: [606910](#)

Gene Ontology: [Hyperlink](#)

Gene Summary: The protein encoded by this gene belongs to the BCL-2 protein family. BCL-2 family members form hetero- or homodimers and act as anti- or pro-apoptotic regulators that are involved in a wide variety of cellular activities. The protein encoded by this gene contains conserved BH4, BH1 and BH2 domains. This protein can interact with other members of BCL-2 protein family including BCL2, BCL2L1/BCL-X(L), and BAX. Overexpression of this gene has been shown to suppress cell apoptosis possibly through the prevention of cytochrome C release from the mitochondria, and thus activating caspase-3 activation. The mouse counterpart of this protein is found to interact with Apaf1 and forms a protein complex with Caspase 9, which suggests the involvement of this protein in APAF1 and CASPASE 9 related apoptotic pathway. [provided by RefSeq]

Other Designations: -

Related Disease

[Cardiovascular Diseases](#) [Diabetes Mellitus, Type 2](#) [Edema](#)
[Genetic Predisposition to Disease](#) [Hematologic Diseases](#) [Hodgkin Disease](#)
[Lymphoma, B-Cell](#) [Lymphoma, Follicular](#) [Lymphoma, Large B-Cell, Diffuse](#)
[Lymphoproliferative Disorders](#) [Occupational Diseases](#) [Waldenstrom Macroglobulinemia](#)
[Werner syndrome](#)

[服務條款](#) | [隱私權政策](#) | [著作及商標](#) | [網站地圖](#)

©2016 亞諾法生技股份有限公司 Abnova Corporation. 版權所有.