



# SZABO SCANDIC

Part of Europa Biosite

## Produktinformation



Forschungsprodukte & Biochemikalien



Zellkultur & Verbrauchsmaterial



Diagnostik & molekulare Diagnostik



Laborgeräte & Service

Weitere Information auf den folgenden Seiten!  
See the following pages for more information!



### Lieferung & Zahlungsart

siehe unsere [Liefer- und Versandbedingungen](#)

### Zuschläge

- Mindermengenzuschlag
- Trockeneiszuschlag
- Gefahrgutzuschlag
- Expressversand

### SZABO-SCANDIC HandelsgmbH

Quellenstraße 110, A-1100 Wien

T. +43(0)1 489 3961-0

F. +43(0)1 489 3961-7

[mail@szabo-scandic.com](mailto:mail@szabo-scandic.com)

[www.szabo-scandic.com](http://www.szabo-scandic.com)

[linkedin.com/company/szaboscandic](https://www.linkedin.com/company/szaboscandic) 

## BCL2L10 293T Cell Transient Overexpression Lysate(Denatured)

Catalog # : H00010017-T01

規格 : [ 100 uL ]

List All

### Specification

**Transfected Cell Line:** 293T

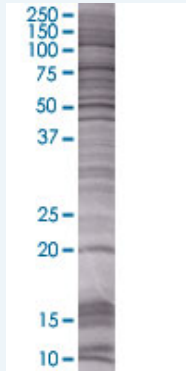
**Plasmid:** pCMV-BCL2L10 full-length

**Host:** Human

**Theoretical MW (kDa):** 22.55

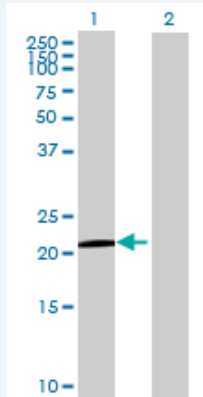
**Quality Control Testing:** Transient overexpression cell lysate was tested with Anti-BCL2L10 antibody (H00010017-B01) by Western Blots.

#### SDS-PAGE Gel



BCL2L10 transfected lysate.

#### Western Blot



Lane 1: BCL2L10 transfected lysate ( 22.55 KDa)

Lane 2: Non-transfected lysate.

**Storage Buffer:** 1X Sample Buffer (50 mM Tris-HCl, 2% SDS, 10% glycerol, 300 mM 2-mercaptoethanol, 0.01% Bromophenol blue)

**Storage Instruction:** Store at -80°C. Aliquot to avoid repeated freezing and thawing.

**MSDS:**  [Download](#)

### Applications

## Western Blot

### Gene Information

Entrez GeneID: [10017](#)

GeneBank Accession#: [NM\\_020396](#)

Protein Accession#: [NP\\_065129](#)

Gene Name: BCL2L10

Gene Alias: BCL-B,Boo,Diva,MGC129810,MGC129811

Gene Description: BCL2-like 10 (apoptosis facilitator)

Omim ID: [606910](#)

Gene Ontology: [Hyperlink](#)

**Gene Summary:** The protein encoded by this gene belongs to the BCL-2 protein family. BCL-2 family members form hetero- or homodimers and act as anti- or pro-apoptotic regulators that are involved in a wide variety of cellular activities. The protein encoded by this gene contains conserved BH4, BH1 and BH2 domains. This protein can interact with other members of BCL-2 protein family including BCL2, BCL2L1/BCL-X(L), and BAX. Overexpression of this gene has been shown to suppress cell apoptosis possibly through the prevention of cytochrome C release from the mitochondria, and thus activating caspase-3 activation. The mouse counterpart of this protein is found to interact with Apaf1 and forms a protein complex with Caspase 9, which suggests the involvement of this protein in APAF1 and CASPASE 9 related apoptotic pathway. [provided by RefSeq]

Other Designations: -

### Related Disease

[Cardiovascular Diseases](#) [Diabetes Mellitus, Type 2](#) [Edema](#)  
[Genetic Predisposition to Disease](#) [Hematologic Diseases](#) [Hodgkin Disease](#)  
[Lymphoma, B-Cell](#) [Lymphoma, Follicular](#) [Lymphoma, Large B-Cell, Diffuse](#)  
[Lymphoproliferative Disorders](#) [Occupational Diseases](#) [Waldenstrom Macroglobulinemia](#)  
[Werner syndrome](#)