



# SZABO SCANDIC

Part of Europa Biosite

## Produktinformation



Forschungsprodukte & Biochemikalien



Zellkultur & Verbrauchsmaterial



Diagnostik & molekulare Diagnostik



Laborgeräte & Service

Weitere Information auf den folgenden Seiten!  
See the following pages for more information!



### Lieferung & Zahlungsart

siehe unsere [Liefer- und Versandbedingungen](#)

### Zuschläge

- Mindermengenzuschlag
- Trockeneiszuschlag
- Gefahrgutzuschlag
- Expressversand

### SZABO-SCANDIC HandelsgmbH

Quellenstraße 110, A-1100 Wien

T. +43(0)1 489 3961-0

F. +43(0)1 489 3961-7

[mail@szabo-scandic.com](mailto:mail@szabo-scandic.com)

[www.szabo-scandic.com](http://www.szabo-scandic.com)

[linkedin.com/company/szaboscandic](https://www.linkedin.com/company/szaboscandic) 

## CHAF1A monoclonal antibody (M02), clone 1C2

Catalog # : H00010036-M02

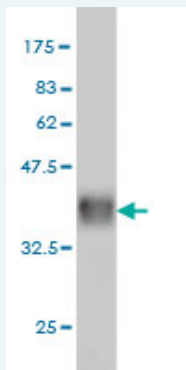
規格 : [ 100 ug ]

[List All](#)

### Specification

<b>Product Description:</b>	Mouse monoclonal antibody raised against a partial recombinant CHAF1A.
<b>Immunogen:</b>	CHAF1A (AAH67093, 21 a.a. ~ 120 a.a) partial recombinant protein with GST tag. MW of the GST tag alone is 26 KDa.
<b>Sequence:</b>	CKDRPAFPVKKLIQARLPFKRLNLVPGKGADDMSDDQGTSVQSKSPDLEASLDTLENNCHVGSDDIDFRPKLVNGKGPLDNFLRNRIETSIGQSTVIIDL
<b>Host:</b>	Mouse
<b>Reactivity:</b>	Human
<b>Isotype:</b>	IgG2b Kappa

**Quality Control Testing:** Antibody Reactive Against Recombinant Protein.



Western Blot detection against Immunogen (36.63 KDa) .

**Storage Buffer:** In 1x PBS, pH 7.4

**Storage Instruction:** Store at -20°C or lower. Aliquot to avoid repeated freezing and thawing.

**MSDS:** [Download](#)

**Datasheet:** [Download](#)

### Publication Reference

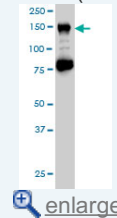
1. [Antibody against chromatin assembly factor-1 is a novel autoantibody specifically recognized in systemic lupus erythematosus.](#)  
Doe K, Nozawa K, Hiruma K, Yamada Y, Matsuki Y, Nakano S, Ogasawara M, Nakano H, Ikeda T, Ikegami T, Fujishiro M, Kawasaki M, Ikeda K, Amano H, Morimoto S, Ogawa H, Takamori K, Sekigawa I, Takasaki Y. *Lupus*. 2014 May 16. pii: 0961203314536245.

### Applications

**Western Blot (Cell lysate)**

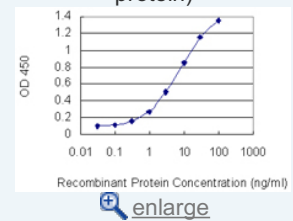
### Application Image

Western Blot (Cell lysate)

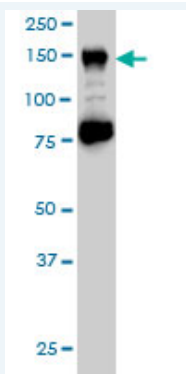


Western Blot (Recombinant protein)

Sandwich ELISA (Recombinant protein)



ELISA



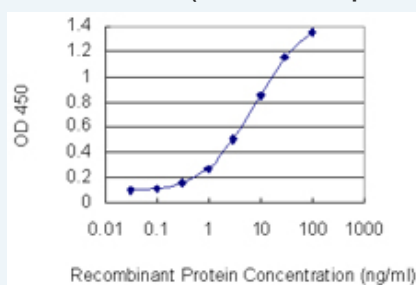
CHAF1A monoclonal antibody (M02), clone 1C2 Western Blot analysis of CHAF1A expression in HeLa S3 NE ( Cat # L013V3 ).

[Protocol Download](#)

#### Western Blot (Recombinant protein)

[Protocol Download](#)

#### Sandwich ELISA (Recombinant protein)



Detection limit for recombinant GST tagged CHAF1A is 0.1 ng/ml as a capture antibody.

[Protocol Download](#)

#### ELISA

#### Gene Information

Entrez GeneID: [10036](#)

GeneBank [BC067093](#)

Accession#:

Protein [AAH67093](#)

Accession#:

Gene Name: CHAF1A

Gene Alias: CAF-1,CAF1,CAF1B,CAF1P150,MGC71229,P150

Gene Description: chromatin assembly factor 1, subunit A (p150)

Omim ID: [601246](#)

Gene Ontology: [Hyperlink](#)

**Gene Summary:** Chromatin assembly factor I (CAF1) is a nuclear complex consisting of p50, p60 (CHAF1B; MIM 601245), and p150 (CHAF1A) subunits that assembles histone octamers onto replicating DNA in vitro (Kaufman et al., 1995 [PubMed 7600578]).[supplied by OMIM

Other Designations: chromatin assembly factor I (150 kDa)

#### Related Disease

