



SZABO SCANDIC

Part of Europa Biosite

Produktinformation



Forschungsprodukte & Biochemikalien



Zellkultur & Verbrauchsmaterial



Diagnostik & molekulare Diagnostik



Laborgeräte & Service

Weitere Information auf den folgenden Seiten!
See the following pages for more information!



Lieferung & Zahlungsart

siehe unsere [Liefer- und Versandbedingungen](#)

Zuschläge

- Mindermengenzuschlag
- Trockeneiszuschlag
- Gefahrgutzuschlag
- Expressversand

SZABO-SCANDIC HandelsgmbH

Quellenstraße 110, A-1100 Wien

T. +43(0)1 489 3961-0

F. +43(0)1 489 3961-7

mail@szabo-scandic.com

www.szabo-scandic.com

[linkedin.com/company/szaboscandic](https://www.linkedin.com/company/szaboscandic) 

PARP3 purified MaxPab mouse polyclonal antibody (B01P) MaxPab®

Catalog # : H00010039-B01P

規格 : [50 ug]

[List All](#)

Specification

Product Description: Mouse polyclonal antibody raised against a full-length human PARP3 protein.

Immunogen: PARP3 (AAH14260, 1 a.a. ~ 533 a.a) full-length human protein.

Sequence:
 MAPKPKPWWQTEGPEKKGGRQAGREEDPFRSTAEALKAIPA EKRIIRVD
 PTCPLSSNPGTQVYEDYNCTLNQTNIEENNNKFYIQLLQDSNRFFTCWN
 RWGRVGEVGGQSKINHFTRLLEDAKKDFEKKFREKTKNNWAERDHFVSH
 GKYTLEIEVQAEDAQEA VVKVDRGPVRTVTKRVQPCSLDPATQKLITNIF
 SKEMFKNTMALMDLDVKKMPLGKLSKQQIARGFEALEALEEALKGPTDG
 GQSL EELSSH FYT VIPHNFGHSQPPPINSPELLQAKK DMLLVLADIELAQA
 LQAVSEQEKTV EEPHPLDRDYQLLKCQLQLLD SGAPEYKVIQTYLEQT
 GSNHRCPTLQHIWKVNQEGEEDRFQAHSKLGNRKLLWHGTNMAVVAAIL
 TSGLRIMPHSGGRVVGKGIYFASENSKASAGYVIGMKCGAHHVGYMFLGEV
 ALGREHHINTDNPSLKSPPPGFDSVIARGHTEPDPTQDTELELDGQQV
 VPQGQPVPCPEFSSSTFSQSEYLIYQESQCRLRYLLEVHL

Host: Mouse

Reactivity: Human

Quality Control Testing: Antibody reactive against mammalian transfected lysate.

Storage Buffer: In 1x PBS, pH 7.4

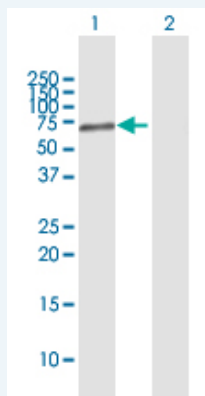
Storage Instruction: Store at -20°C or lower. Aliquot to avoid repeated freezing and thawing.

MSDS: [Download](#)

Datasheet: [Download](#)

Applications

Western Blot (Transfected lysate)

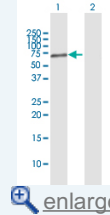


Western Blot analysis of PARP3 expression in transfected 293T cell line by PARP3 MaxPab polyclonal antibody.

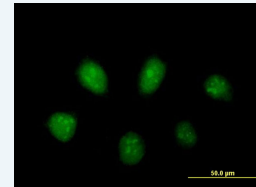
Lane 1: PARP3 transfected lysate(58.63 KDa).

Application Image

Western Blot (Transfected lysate)

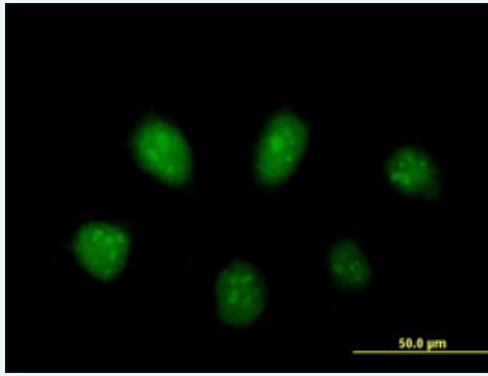


Immunofluorescence



[enlarge](#)

Immunofluorescence



 [enlarge this image](#)

Immunofluorescence of purified MaxPab antibody to PARP3 on HeLa cell. [antibody concentration 10 ug/ml]

Gene Information

Entrez GeneID: [10039](#)

GeneBank Accession#: [BC014260](#)

Protein Accession#: [AAH14260](#)

Gene Name: PARP3

Gene Alias: ADPRT3,ADPRTL2,ADPRTL3,IRT1,hPARP-3,pADPRT-3

Gene Description: poly (ADP-ribose) polymerase family, member 3

Omim ID: [607726](#)

Gene Ontology: [Hyperlink](#)

Gene Summary: The protein encoded by this gene belongs to the PARP family. These enzymes modify nuclear proteins by poly-ADP-ribosylation, which is required for DNA repair, regulation of apoptosis, and maintenance of genomic stability. This gene encodes the poly(ADP-ribosyl)transferase 3, which is preferentially localized to the daughter centriole throughout the cell cycle. Alternatively spliced transcript variants encoding different isoforms have been identified. [provided by RefSeq]

Other Designations: ADP-ribosyltransferase (NAD+; poly (ADP-ribose) polymerase)-like 2,ADP-ribosyltransferase (NAD+; poly (ADP-ribose) polymerase)-like 3,NAD+ ADP-ribosyltransferase 3,poly(ADP-ribose) polymerase 3,poly(ADP-ribose) synthetase-3

Gene Pathway

[Base excision repair](#)

Related Disease

[Cardiovascular Diseases](#) [Diabetes Mellitus, Type 2](#) [DNA Damage](#) [Edema](#)
[Genetic Predisposition to Disease](#) [Kidney Failure](#), [Chronic Urinary Bladder Neoplasms](#)

