



# SZABO SCANDIC

Part of Europa Biosite

## Produktinformation



Forschungsprodukte & Biochemikalien



Zellkultur & Verbrauchsmaterial



Diagnostik & molekulare Diagnostik



Laborgeräte & Service

Weitere Information auf den folgenden Seiten!  
See the following pages for more information!



### Lieferung & Zahlungsart

siehe unsere [Liefer- und Versandbedingungen](#)

### Zuschläge

- Mindermengenzuschlag
- Trockeneiszuschlag
- Gefahrgutzuschlag
- Expressversand

### SZABO-SCANDIC HandelsgmbH

Quellenstraße 110, A-1100 Wien

T. +43(0)1 489 3961-0

F. +43(0)1 489 3961-7

[mail@szabo-scandic.com](mailto:mail@szabo-scandic.com)

[www.szabo-scandic.com](http://www.szabo-scandic.com)

[linkedin.com/company/szaboscandic](https://www.linkedin.com/company/szaboscandic) 

## PARP3 monoclonal antibody (M06), clone 2H6

Catalog # : H00010039-M06

規格 : [ 100 ug ]

[List All](#)

### Specification

**Product Description:** Mouse monoclonal antibody raised against a full-length recombinant PARP3.

**Immunogen:** PARP3 (AAH14260, 1 a.a. ~ 533 a.a) full-length recombinant protein with GST tag. MW of the GST tag alone is 26 KDa.

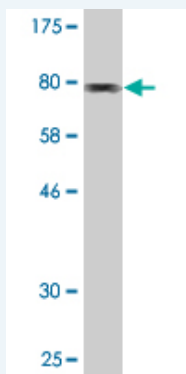
**Sequence:**  
 MAPKPKPWQTEGPEKKGKGRQAGREEDPFRSTAEALKAIPA EKRIIRVD  
 PTCPLSSNPGTQVYEDYNCTLNQTNIE NNKFYIQLLQDSNRFFTCWN  
 RWGRVGEVGGQSKINHFRLEDAKKDFEKKFREKTKNNWAERDHFVSH  
 GKTYLIEVQAEDAQAQAVKVDVDRGPVRTVTKRVQPCSLDPATQKLITNIF  
 SKEMFKNTMALMDLDVKKMPLGKLSKQQIARGFEALEEALKGPTDG  
 GQSL EELSSH FYTVIPHNFGHSQPPPINSPELLQAKK DMLLVLADIELAQA  
 LQAVSEQEKTVEEVPHPLDRDYQLLKCQLQLLDGAPEYKVIQTYLEQT  
 GSNHRCPTLQHIWKVNQEGEEDRFQAHSKLGNRKLLWHGTNMAVVAAIL  
 TSGLRIMP HSGGRVGVGKIYFASENSKSAGYVIGMKCGAHHVGYMFLGEV  
 ALGREHHINTDNPSLKSPPPGFDSVIARGHTEPDPTQDTELELDGQQVW  
 VPQGGPVPCEPFSSTFSQSEYLIYQESQCRLRYLLEVHL

**Host:** Mouse

**Reactivity:** Human

**Isotype:** IgG2a Kappa

**Quality Control Testing:** Antibody Reactive Against Recombinant Protein.



Western Blot detection against Immunogen (84.37 KDa) .

**Storage Buffer:** In 1x PBS, pH 7.4

**Storage Instruction:** Store at -20°C or lower. Aliquot to avoid repeated freezing and thawing.

**MSDS:** [Download](#)

**Datasheet:** [Download](#)

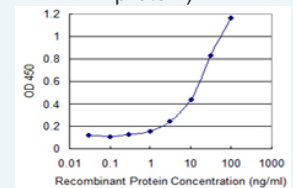
### Applications

Western Blot (Recombinant protein)

### Application Image

Western Blot (Recombinant protein)

Sandwich ELISA (Recombinant protein)

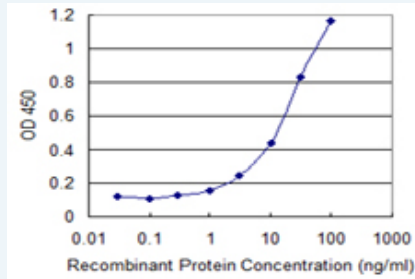


[enlarge](#)

ELISA

[Protocol Download](#)

## Sandwich ELISA (Recombinant protein)



Detection limit for recombinant GST tagged PARP3 is 0.3 ng/ml as a capture antibody.

 [Protocol Download](#)

## ELISA

### Gene Information

Entrez GeneID: [10039](#)

GeneBank Accession#: [BC014260](#)

Protein Accession#: [AAH14260](#)

Gene Name: PARP3

Gene Alias: ADPRT3,ADPRTL2,ADPRTL3,IRT1,hPARP-3,pADPRT-3

Gene Description: poly (ADP-ribose) polymerase family, member 3

Omim ID: [607726](#)

Gene Ontology: [Hyperlink](#)

**Gene Summary:** The protein encoded by this gene belongs to the PARP family. These enzymes modify nuclear proteins by poly-ADP-ribosylation, which is required for DNA repair, regulation of apoptosis, and maintenance of genomic stability. This gene encodes the poly(ADP-ribosyl)transferase 3, which is preferentially localized to the daughter centriole throughout the cell cycle. Alternatively spliced transcript variants encoding different isoforms have been identified. [provided by RefSeq]

**Other Designations:** ADP-ribosyltransferase (NAD+; poly (ADP-ribose) polymerase)-like 2,ADP-ribosyltransferase (NAD+; poly (ADP-ribose) polymerase)-like 3,NAD+ ADP-ribosyltransferase 3,poly(ADP-ribose) polymerase 3,poly(ADP-ribose) synthetase-3

### Gene Pathway

[Base excision repair](#)

### Related Disease

[Cardiovascular Diseases](#) [Diabetes Mellitus, Type 2](#) [DNA Damage](#) [Edema](#)  
[Genetic Predisposition to Disease](#) [Kidney Failure, Chronic](#) [Urinary Bladder Neoplasms](#)