



# SZABO SCANDIC

Part of Europa Biosite

## Produktinformation



Forschungsprodukte & Biochemikalien



Zellkultur & Verbrauchsmaterial



Diagnostik & molekulare Diagnostik



Laborgeräte & Service

Weitere Information auf den folgenden Seiten!  
See the following pages for more information!



### Lieferung & Zahlungsart

siehe unsere [Liefer- und Versandbedingungen](#)

### Zuschläge

- Mindermengenzuschlag
- Trockeneiszuschlag
- Gefahrgutzuschlag
- Expressversand

### SZABO-SCANDIC HandelsgmbH

Quellenstraße 110, A-1100 Wien

T. +43(0)1 489 3961-0

F. +43(0)1 489 3961-7

[mail@szabo-scandic.com](mailto:mail@szabo-scandic.com)

[www.szabo-scandic.com](http://www.szabo-scandic.com)

[linkedin.com/company/szaboscandic](https://www.linkedin.com/company/szaboscandic) 

## TOM1L1 MaxPab mouse polyclonal antibody (B01) MaxPab®

Catalog # : H00010040-B01

規格 : [ 50 uL ]

[List All](#)

### Specification

**Product Description:** Mouse polyclonal antibody raised against a full-length human TOM1L1 protein.

**Immunogen:** TOM1L1 (AAH29396.1, 1 a.a. ~ 346 a.a) full-length human protein.

**Sequence:**  
 MAFGKSHRDPYATSVGHLEKATFAGVQTEDWGQFMHICDIINTTQDGP  
 KDAVKALKKRISKNYNHKEIQLTSLIDMCVQNCGPFQSLIVKKEFVKENL  
 VKLLNPRYNLPLDIQNRILNFIKTWSQGFPGGVDVSEVKEVYLDLVKKGV  
 QFPPSEAEAETARQETAQISSNPPTSVPTAPALSSVIAPKNSTVTLVPEQI  
 GKLHSELDMVKMNVRVMSAILMENTPGSENHEDIELLQKLYKTGREMQE  
 RIMDLLVVVENEDVTVELIQVNEDLNAILGYERFTRNQQRILEQNKQKE  
 ATNTTSEPSAPSQDLLDLSPSPRMPRATLGELNTMNNQLSGLSK

**Host:** Mouse

**Reactivity:** Human

**Quality Control Testing:** Antibody reactive against mammalian transfected lysate.

**Storage Buffer:** No additive

**Storage Instruction:** Store at -20°C or lower. Aliquot to avoid repeated freezing and thawing.

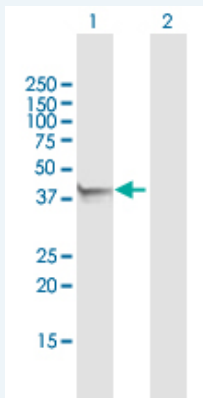
**Note:** For IHC and IF applications, antibody purification with Protein A will be needed prior to use.

**MSDS:**  [Download](#)

**Datasheet:**  [Download](#)

### Applications

#### Western Blot (Transfected lysate)



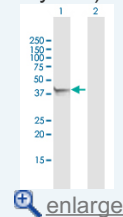
Western Blot analysis of TOM1L1 expression in transfected 293T cell line (H00010040-T01) by TOM1L1 MaxPab polyclonal antibody.

Lane 1: TOM1L1 transfected lysate(38.06 KDa).

Lane 2: Non-transfected lysate.

### Application Image

Western Blot (Transfected lysate)



## Gene Information

---

**Entrez GeneID:** [10040](#)

---

**GeneBank  
Accession#:** [BC029396.1](#)

---

**Protein  
Accession#:** [AAH29396.1](#)

---

**Gene Name:** TOM1L1

---

**Gene Alias:** OK/KNS-CL.3, SRCASM

---

**Gene  
Description:** target of myb1 (chicken)-like 1

---

**Omim ID:** [604701](#)

---

**Gene Ontology:** [Hyperlink](#)

---

**Other  
Designations:** Src activating and signaling molecule, target of myb 1-like 1, target of myb1-like 1

---