



SZABO SCANDIC

Part of Europa Biosite

Produktinformation



Forschungsprodukte & Biochemikalien



Zellkultur & Verbrauchsmaterial



Diagnostik & molekulare Diagnostik



Laborgeräte & Service

Weitere Information auf den folgenden Seiten!
See the following pages for more information!



Lieferung & Zahlungsart

siehe unsere [Liefer- und Versandbedingungen](#)

Zuschläge

- Mindermengenzuschlag
- Trockeneiszuschlag
- Gefahrgutzuschlag
- Expressversand

SZABO-SCANDIC HandelsgmbH

Quellenstraße 110, A-1100 Wien

T. +43(0)1 489 3961-0

F. +43(0)1 489 3961-7

mail@szabo-scandic.com

www.szabo-scandic.com

[linkedin.com/company/szaboscandic](https://www.linkedin.com/company/szaboscandic) 

TOM1L1 purified MaxPab mouse polyclonal antibody (B01P) MaxPab®

Catalog # : H00010040-B01P

規格 : [50 ug]

[List All](#)

Specification

Product Description: Mouse polyclonal antibody raised against a full-length human TOM1L1 protein.

Immunogen: TOM1L1 (AAH29396.1, 1 a.a. ~ 346 a.a) full-length human protein.

Sequence:
 MAFGKSHRDPYATSVGHLEKATFAGVQTEDWGQFMHICDIINTTQDGP
 KDAVKALKKRISKNYNHKEIQLTSLIDMCVQNCGSPFQSLIVKKEFVKENL
 VKLLNPRYNLPLDIQNRILNFIKTWSQGFPGGVVDVSEVKEVYLDLVKKGV
 QFPPSEAEAETARQETAQISSNPPTSVPTAPALSSVIAPKNSTVTLVPEQI
 GKLHSELDMMVMNVRVMSAILMENTPGSENHEDIELLQKLYKTGREMQE
 RIMDLLVVVENEVDVVELIQVNEDLNAILGYERFTRNQQRILEQNKQKE
 ATNTTSEPSAPSQDLLDLSPSPRMPRATLGELNTMNNQLSGLSK

Host: Mouse

Reactivity: Human

Quality Control Testing: Antibody reactive against mammalian transfected lysate.

Storage Buffer: In 1x PBS, pH 7.4

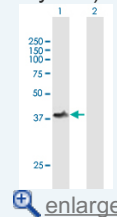
Storage Instruction: Store at -20°C or lower. Aliquot to avoid repeated freezing and thawing.

MSDS:  [Download](#)

Datasheet:  [Download](#)

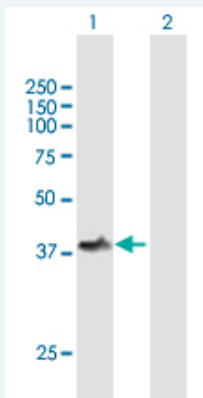
Application Image

Western Blot (Transfected lysate)



Applications


Western Blot (Transfected lysate)



Western Blot analysis of TOM1L1 expression in transfected 293T cell line (H00010040-T01) by TOM1L1 MaxPab polyclonal antibody.

Lane 1: TOM1L1 transfected lysate(38.06 KDa).

Lane 2: Non-transfected lysate.

 [Protocol Download](#)

Gene Information

Entrez GeneID: [10040](#)

**GeneBank
Accession#:** [BC029396.1](#)

**Protein
Accession#:** [AAH29396.1](#)

Gene Name: TOM1L1

Gene Alias: OK/KNS-CL.3, SRCASM

**Gene
Description:** target of myb1 (chicken)-like 1

Omim ID: [604701](#)

Gene Ontology: [Hyperlink](#)

**Other
Designations:** Src activating and signaling molecule, target of myb 1-like 1, target of myb1-like 1

[服務條款](#) | [隱私權政策](#) | [著作及商標](#) | [網站地圖](#)

©2016 亞諾法生技股份有限公司 Abnova Corporation. 版權所有.